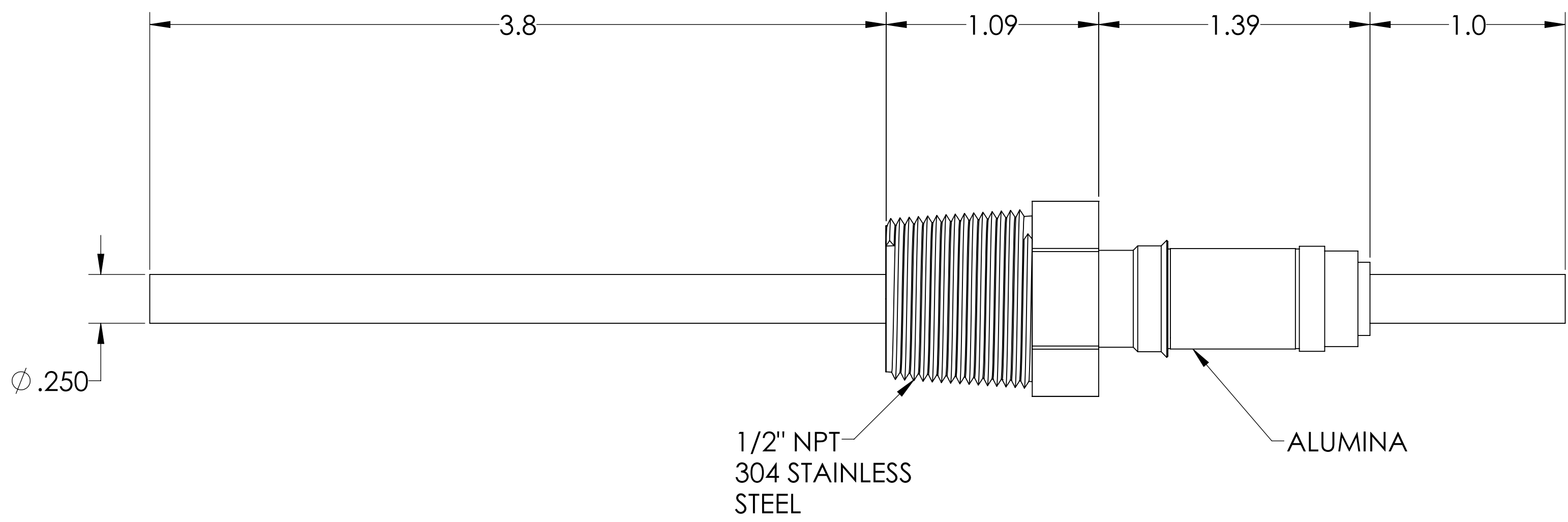
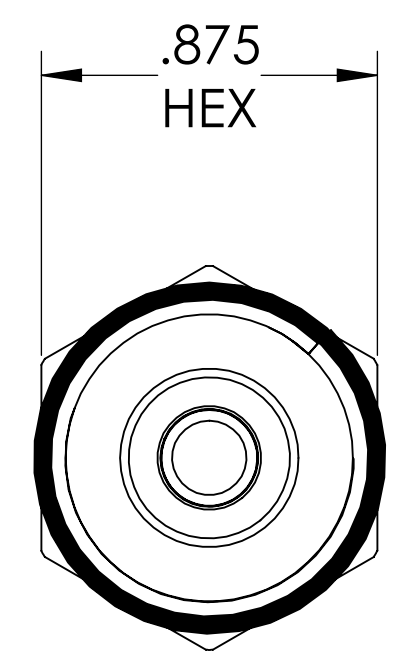
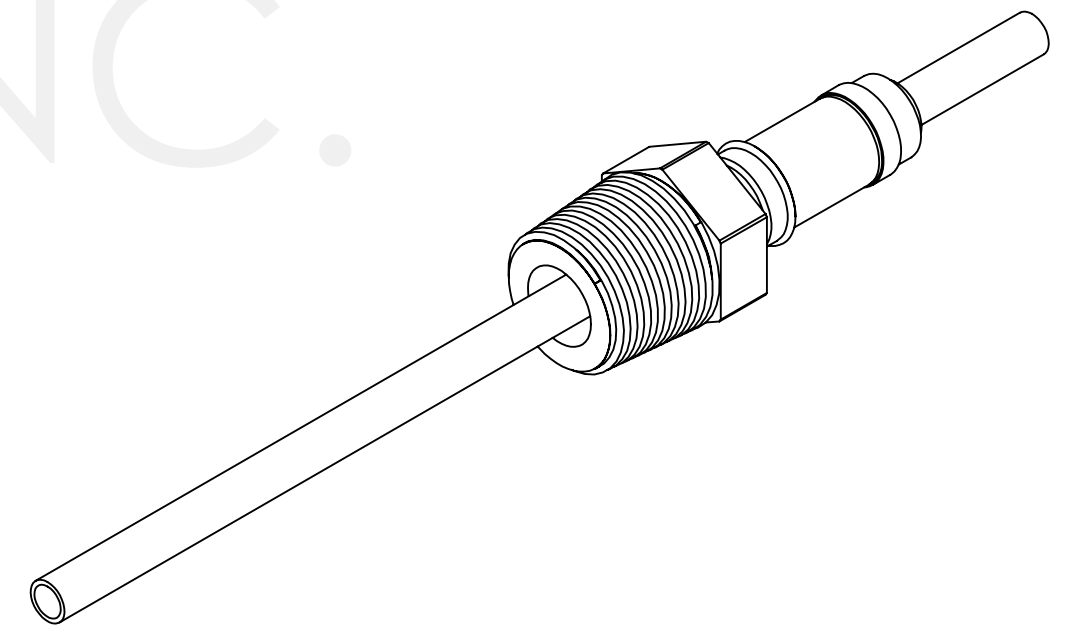


MPF PRODUCTS INC.



PART #	CONDUCTOR TYPE	CONDUCTOR MATERIAL	AMPS
A0003-1-NPT	ROD	OFHC COPPER	180
A0003-2-NPT	TUBE (.032 WALL)	OFHC COPPER	N/A
A0003-3-NPT	ROD	304 STN STL	7
A0003-4-NPT	TUBE (.032 WALL)	304 STN STL	N/A
A0003-5-NPT	ROD	NICKEL 200	55
A0003-6-NPT	TUBE (.032 WALL)	NICKEL 200	N/A

- NOTE:
1. VOLTAGE: 12,000 VOLTS DC
 2. CURRENT: SEE TABLE
 3. TEMPERATURE RATING: -100 TO 450°C

Power Feedthrough, 12 KV, 1 Pin, 0.25" Conductor, 0.5" NPT Fitting, UHV Rated, Bakeable to 450°C

UNLESS OTHERWISE SPECIFIED:		QUOTATION #		N/A	
DIMENSIONS ARE IN INCHES TOLERANCES:		NAME	DATE	MPF PRODUCTS INC.	
ANGULAR: MACH ± 1/2"		DRAWN	9/11/2015		
TWO PLACE DECIMAL ± .030		CHECKED	9/11/2015		
THREE PLACE DECIMAL ± .015		ENG APPR.	9/11/2015		
MATERIAL		THIRD ANGLE:		TITLE: POWER FEEDTHROUGH, 12 KV, 1 PIN, 0.25" CONDUCTOR, 0.5" NPT FITTING	
FINISH		APPLICATION			
PLATING		NEXT ASSY USED ON			
SURFACE FINISH:		63 OR BETTER		DOWNLOADED FROM MPFPI.COM	
UNLESS OTHERWISE SPECIFIED:		ALL DIAMETERS CONCENTRIC WITHIN .005. REMOVE ALL BURRS AND SHARP EDGES		DWG. NO. A0003	
		Tuesday, August 13, 2019 8:14:25 AM		REV	