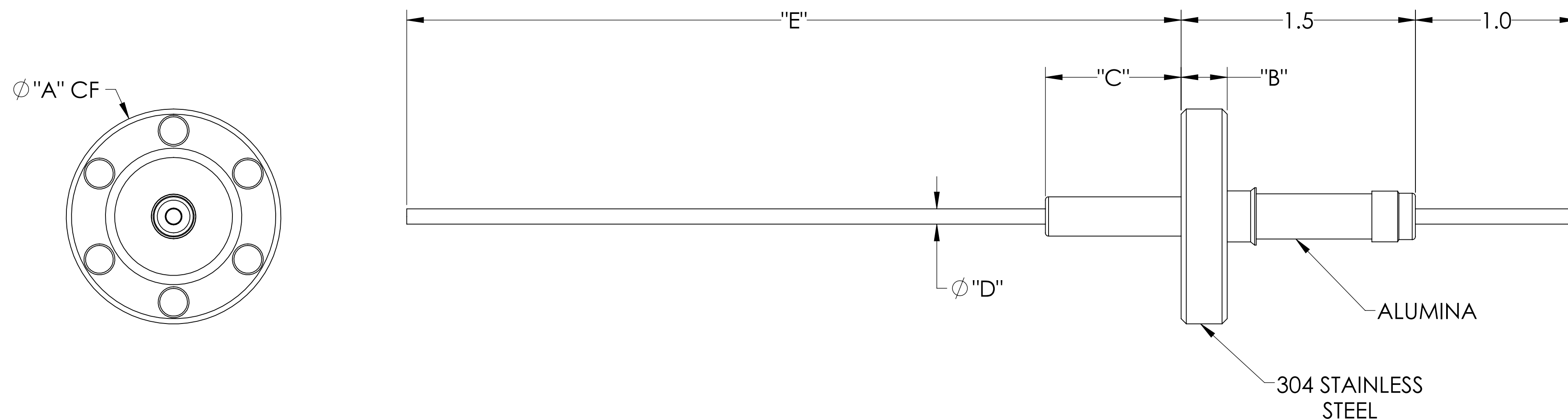
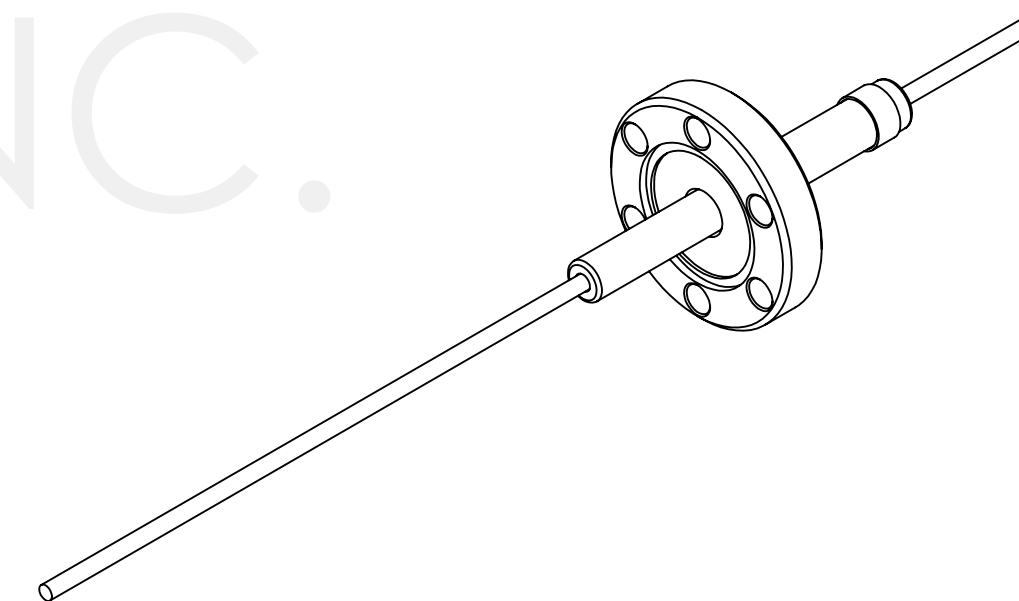


## MPF PRODUCTS INC.



PART #	CONDUCTOR MATERIAL	Ø "A"	"B"	("C")	Ø "D"	"E"	CURRENT RATING
A0043-1-CF	304 STAINLESS STEEL	1.33	.30	.8	.094	4.8	3 AMPS
A0043-3-CF	NICKEL 200	1.33	.30	.8	.092	4.8	15 AMPS
A0043-5-CF	OFHC COPPER	1.33	.30	.8	.094	4.8	50 AMPS
A0043-7-CF	304 STAINLESS STEEL	2.75	.50	.6	.094	4.6	3 AMPS
A0043-9-CF	NICKEL 200	2.75	.50	.6	.092	4.6	15 AMPS
A0043-11-CF	OFHC COPPER	2.75	.50	.6	.094	4.6	50 AMPS

## NOTE:

- VOLTAGE: 14,000 VOLTS DC
- CURRENT: SEE TABLE
- TEMPERATURE RATING: -100 TO 450°C

Power Feedthrough, 14 KV, 1 Pin, 1.33" Conflat Flange, UHV Rated, Bakeable to 450°C

UNLESS OTHERWISE SPECIFIED:		QUOTATION #	
DIMENSIONS ARE IN INCHES TOLERANCES:		N/A	
ANGULAR: MACH ± 1/2° TWO PLACE DECIMAL ± .030 THREE PLACE DECIMAL ± .015		NAME	DATE
MATERIAL		DRAWN	WJ 9/11/2015
FINISH		CHECKED	9/11/2015
PLATING		ENG APPR.	WJ 9/11/2015
		THIRD ANGLE:	
		APPLICATION	
		NEXT ASSY	USED ON
		SURFACE FINISH: 63 OR BETTER	
		UNLESS OTHERWISE SPECIFIED:	
		ALL DIAMETERS CONCENTRIC WITHIN .005. REMOVE ALL BURRS AND SHARP EDGES	
		TITLE: <b>POWER FEEDTHROUGH,            14 KV, 1 PIN, 1.33"            CONFLAT FLANGE</b>	
		DWG. NO. <b>A0043</b>	
		REV.	
		DOWNLOADED FROM MPFPI.COM Friday, January 18, 2019 11:29:46 AM	