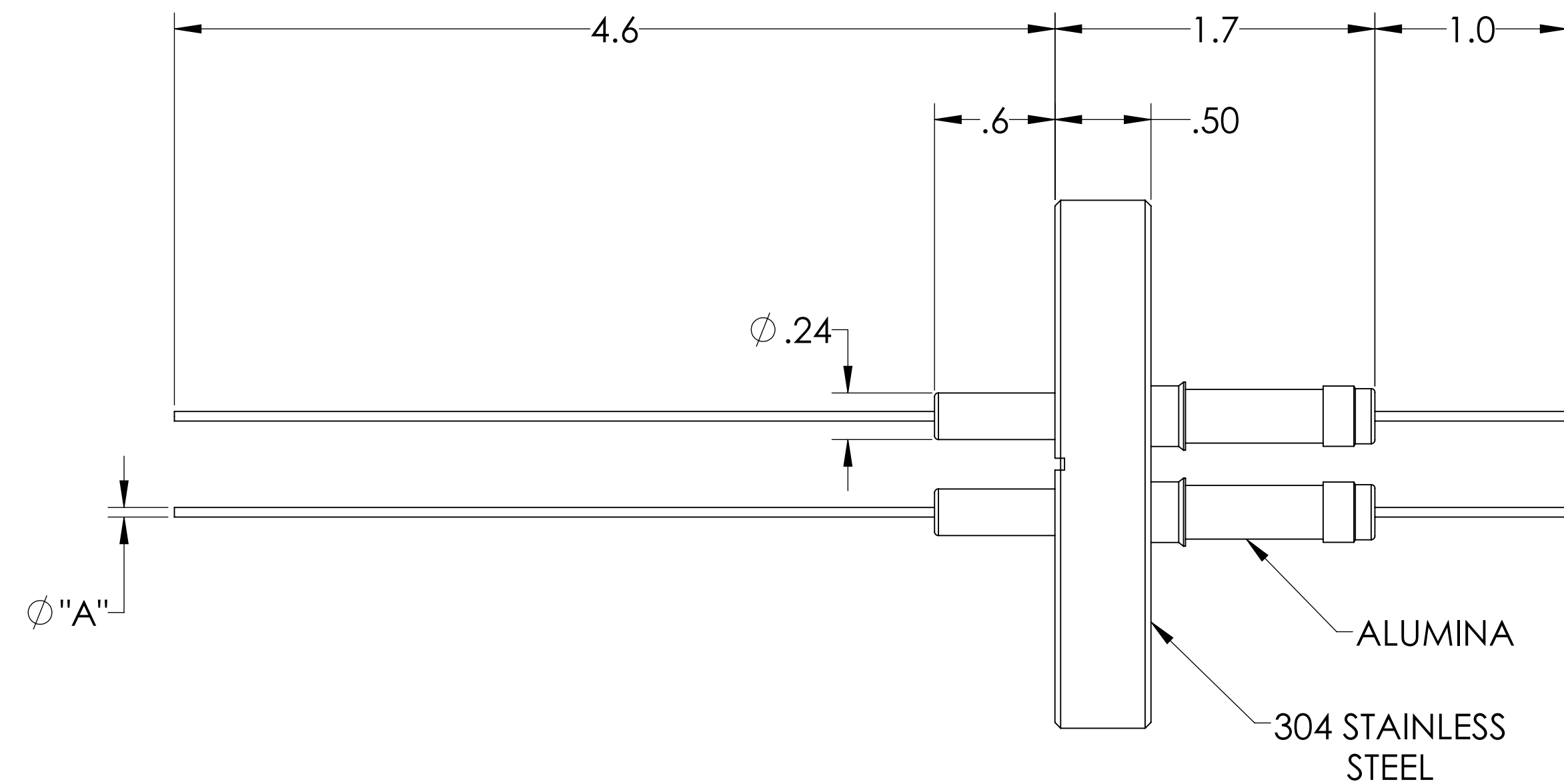
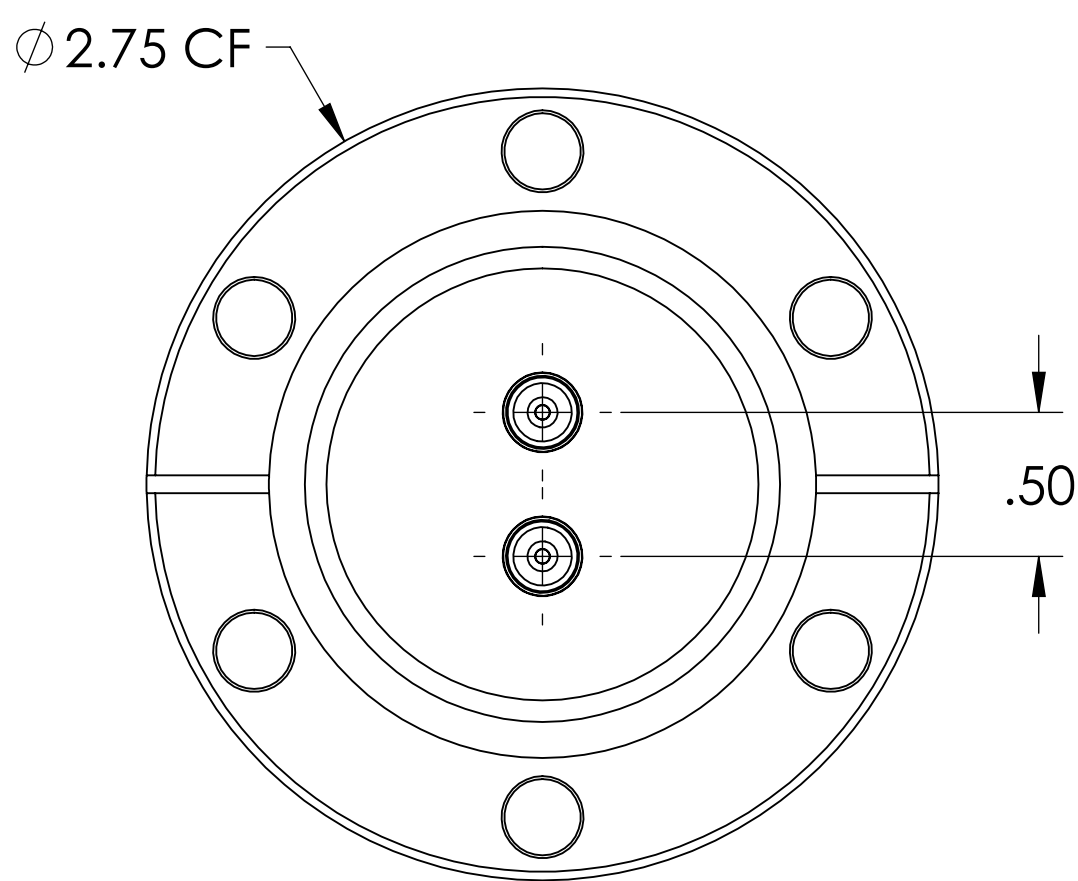
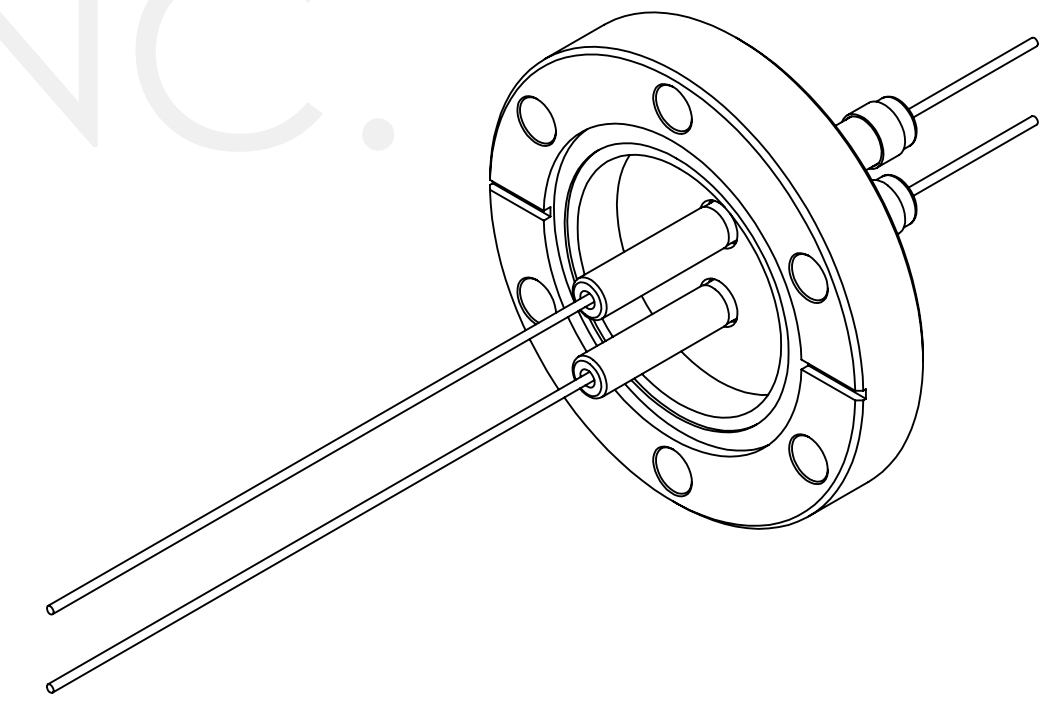


MPF PRODUCTS INC.



PART #	Ø "A"	CONDUCTOR MATERIAL	CURRENT RATING
A0044-1-CF	.092	NICKEL 200	15 AMPS
A0044-2-CF	.050	NICKEL 200	8 AMPS
A0044-3-CF	.094	OFHC COPPER	50 AMPS
A0044-4-CF	.050	OFHC COPPER	25 AMPS

- NOTE:
1. VOLTAGE: 14,000 VOLTS DC
 2. CURRENT: SEE TABLE
 3. TEMPERATURE RATING: -100 TO 450°C

Power Feedthrough, 14 KV, 2 Pins, 2.75" Conflat Flange, UHV Rated, Bakeable to 450°C

UNLESS OTHERWISE SPECIFIED:	QUOTATION #	N/A
DIMENSIONS ARE IN INCHES TOLERANCES:	NAME	DATE
ANGULAR: MACH ± 1/2°	DRAWN	9/11/2015
TWO PLACE DECIMAL ± .030	CHECKED	9/11/2015
THREE PLACE DECIMAL ± .015	ENG APPR.	WJ 9/11/2015
MATERIAL	THIRD ANGLE:	TITLE:
		POWER FEEDTHROUGH, 14 KV, 2 PINS, 2.75" CONFLAT FLANGE
FINISH	APPLICATION	DOWNLOADED FROM MPFPI.COM
PLATING	NEXT ASSY	DWG. NO.
	USED ON	A0044
	SURFACE FINISH:	REV
	UNLESS OTHERWISE SPECIFIED:	Friday, January 18, 2019 11:28:11 AM
	ALL DIAMETERS CONCENTRIC WITHIN .005. REMOVE ALL BURRS AND SHARP EDGES	