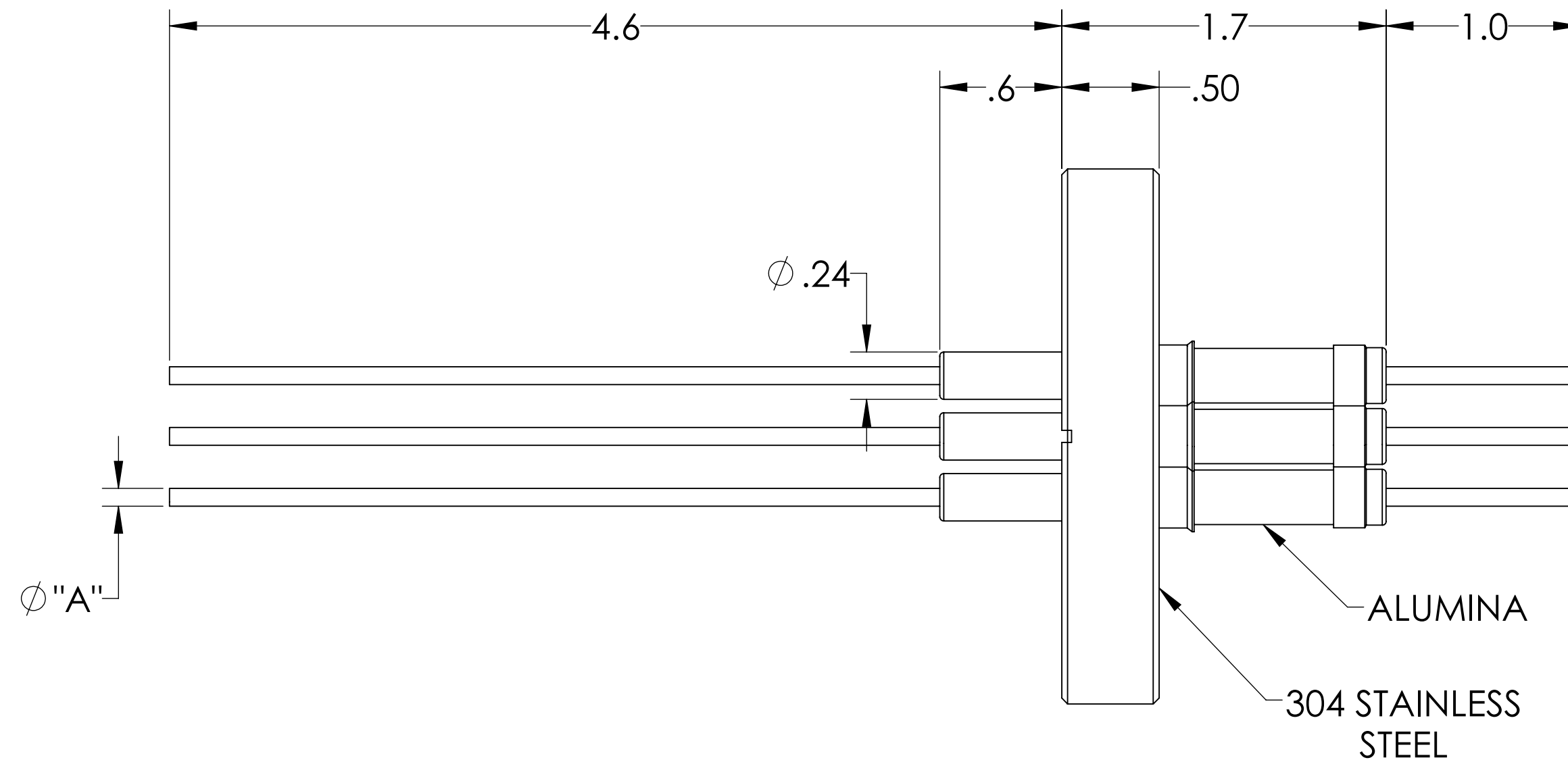
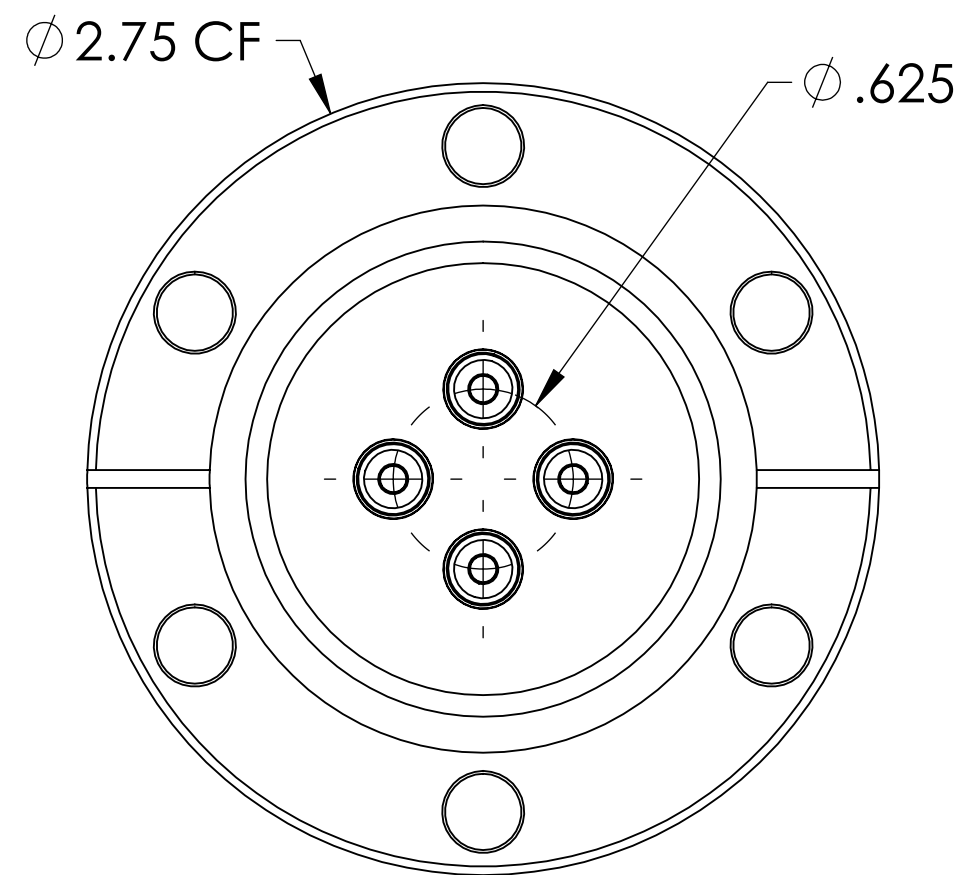
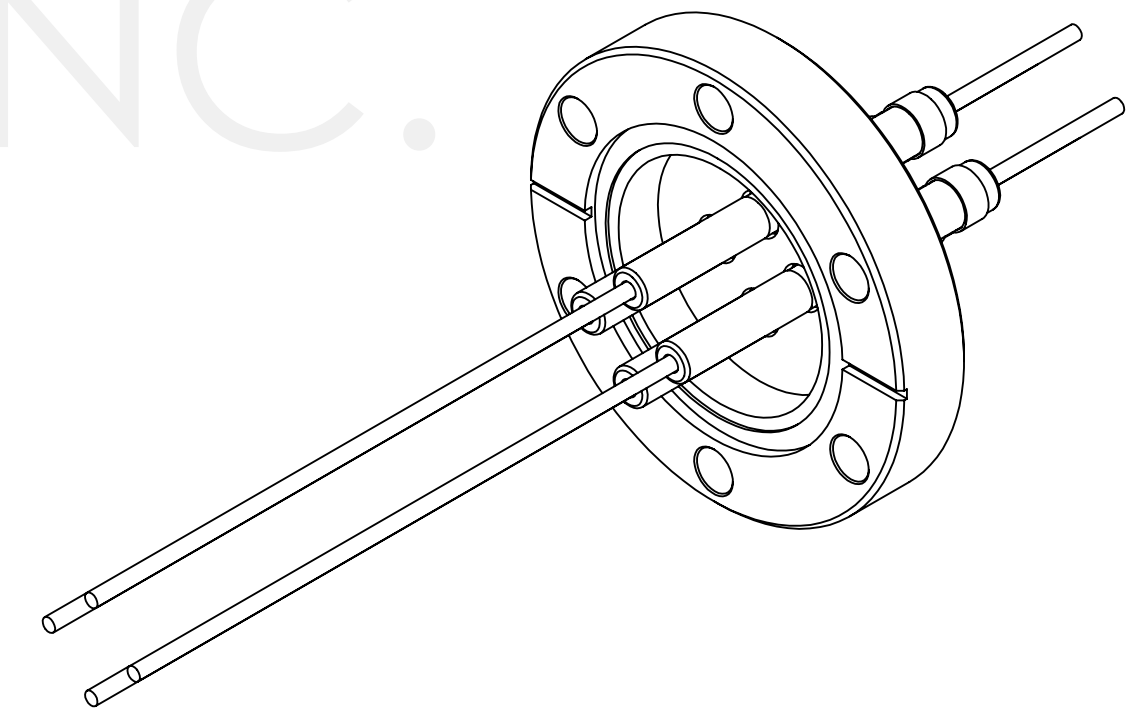


MPF PRODUCTS INC.



PART #	Ø "A"	CONDUCTOR MATERIAL	CURRENT RATING
A0045-1-CF	.092	NICKEL 200	15 AMPS
A0045-2-CF	.050	NICKEL 200	8 AMPS
A0045-3-CF	.094	OFHC COPPER	50 AMPS
A0045-4-CF	.050	OFHC COPPER	25 AMPS

NOTE:

1. VOLTAGE: 14,000 VOLTS DC
2. CURRENT: SEE TABLE
3. TEMPERATURE RATING: -100 TO 450°C

Power Feedthrough, 14 KV, 4 Pins, 2.75" Conflat Flange, UHV Rated, Bakeable to 450°C

UNLESS OTHERWISE SPECIFIED:		QUOTATION #		N/A		
DIMENSIONS ARE IN INCHES		NAME	DATE	MPF PRODUCTS INC.		
TOLERANCES:		DRAWN	WJ			9/11/2015
ANGULAR: MACH ± 1/2°		CHECKED				9/11/2015
TWO PLACE DECIMAL ± .030		ENG APPR.	WJ			9/11/2015
THREE PLACE DECIMAL ± .015		THIRD ANGLE:		POWER FEEDTHROUGH, 14 KV, 4 PINS, 2.75" CONFLAT FLANGE		
MATERIAL		APPLICATION				
FINISH		NEXT ASSY	USED ON			
PLATING		SURFACE FINISH: 63/ OR BETTER		DOWNLOADED FROM MPFPI.COM		
UNLESS OTHERWISE SPECIFIED:		ALL DIAMETERS CONCENTRIC WITHIN .005.		DWG. NO. A0045		
REMOVE ALL BURRS AND SHARP EDGES		Friday, January 18, 2019 11:27:26 AM		REV		