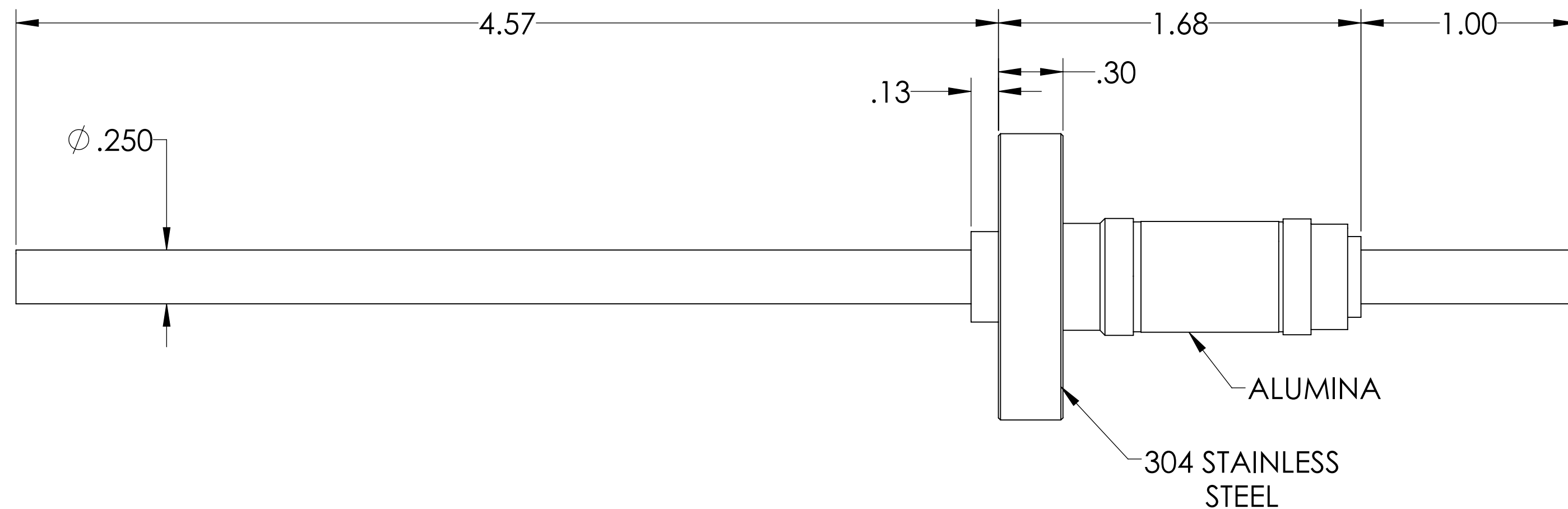
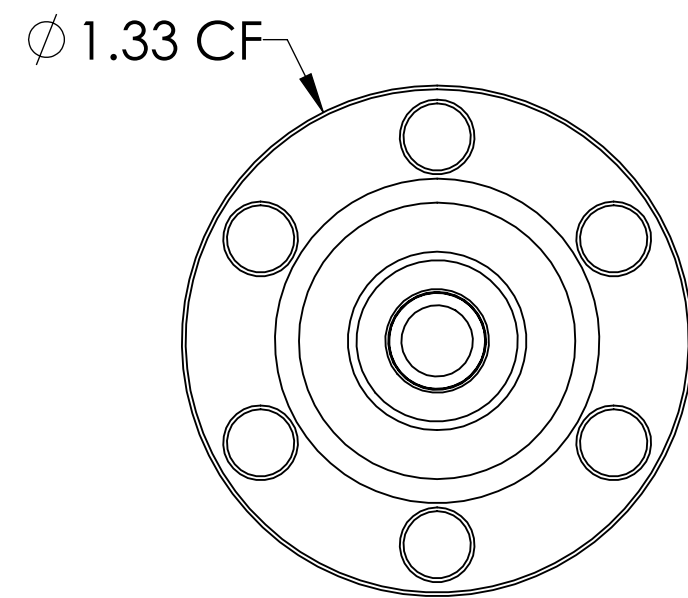
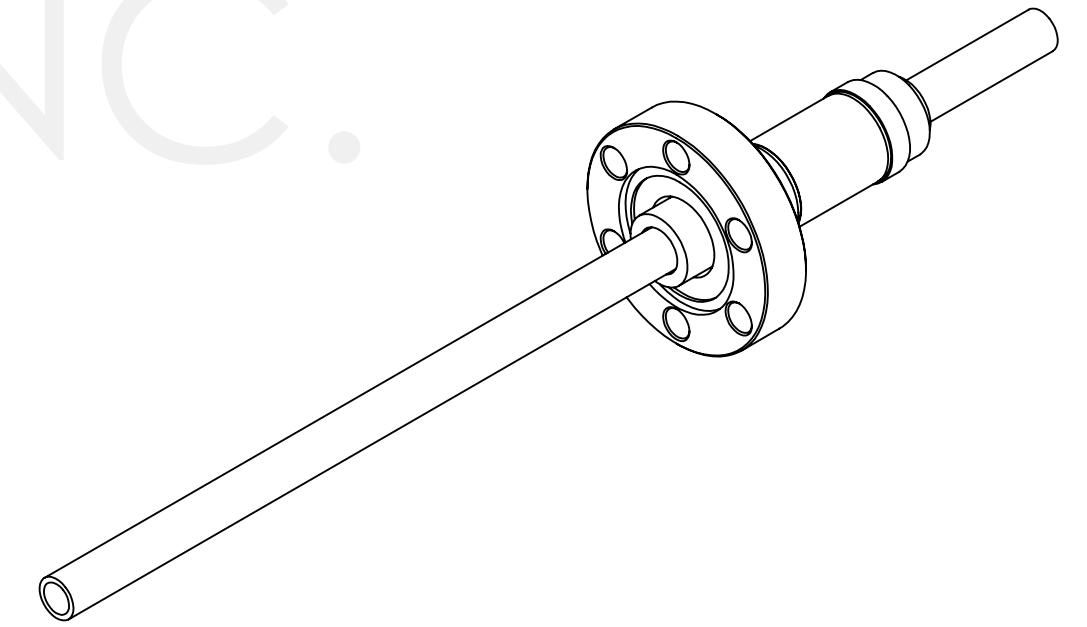


MPF PRODUCTS INC.



PART #	CONDUCTOR TYPE	CONDUCTOR MATERIAL	AMPS
A0049-1-CF	ROD	OFHC COPPER	180
A0049-2-CF	TUBE ( .032 WALL )	OFHC COPPER	N/A
A0049-3-CF	ROD	304 STN STL	7
A0049-4-CF	TUBE ( .032 WALL )	304 STN STL	N/A
A0049-5-CF	ROD	NICKEL 200	55
A0049-6-CF	TUBE ( .032 WALL )	NICKEL 200	N/A
A0049-7-CF	ROD	MOLYBDENUM	93

## NOTE:

- VOLTAGE: 12,000 VOLTS DC
- CURRENT: SEE TABLE
- TEMPERATURE RATING: -100 TO 450°C

Power Feedthrough, 12 KV, 1 Pin, 0.25" Conductor, 1.33" Conflat Flange, UHV Rated, Bakeable to 450°C

UNLESS OTHERWISE SPECIFIED:		QUOTATION #	
DIMENSIONS ARE IN INCHES		N/A	
TOLERANCES:		NAME	DATE
ANGULAR: MACH ± 1/2°		WJ	9/11/2015
TWO PLACE DECIMAL ± .030		CHECKED	9/11/2015
THREE PLACE DECIMAL ± .015		ENG APPR.	WJ 9/11/2015
MATERIAL		THIRD ANGLE:	
FINISH		APPLICATION	
PLATING		NEXT ASSY	USED ON
		SURFACE FINISH:	63/ OR BETTER
		UNLESS OTHERWISE SPECIFIED:	
		ALL DIAMETERS CONCENTRIC WITHIN .005. REMOVE ALL BURRS AND SHARP EDGES	
		TITLE:	
		POWER FEEDTHROUGH, 12 KV, 1 PIN, 0.25" CONDUCTOR, 1.33" CONFLAT FLANGE	
		DOWNLOADED FROM MPFPI.COM	
		DWG. NO.	REV
		A0049	
		Tuesday, August 13, 2019 8:12:30 AM	