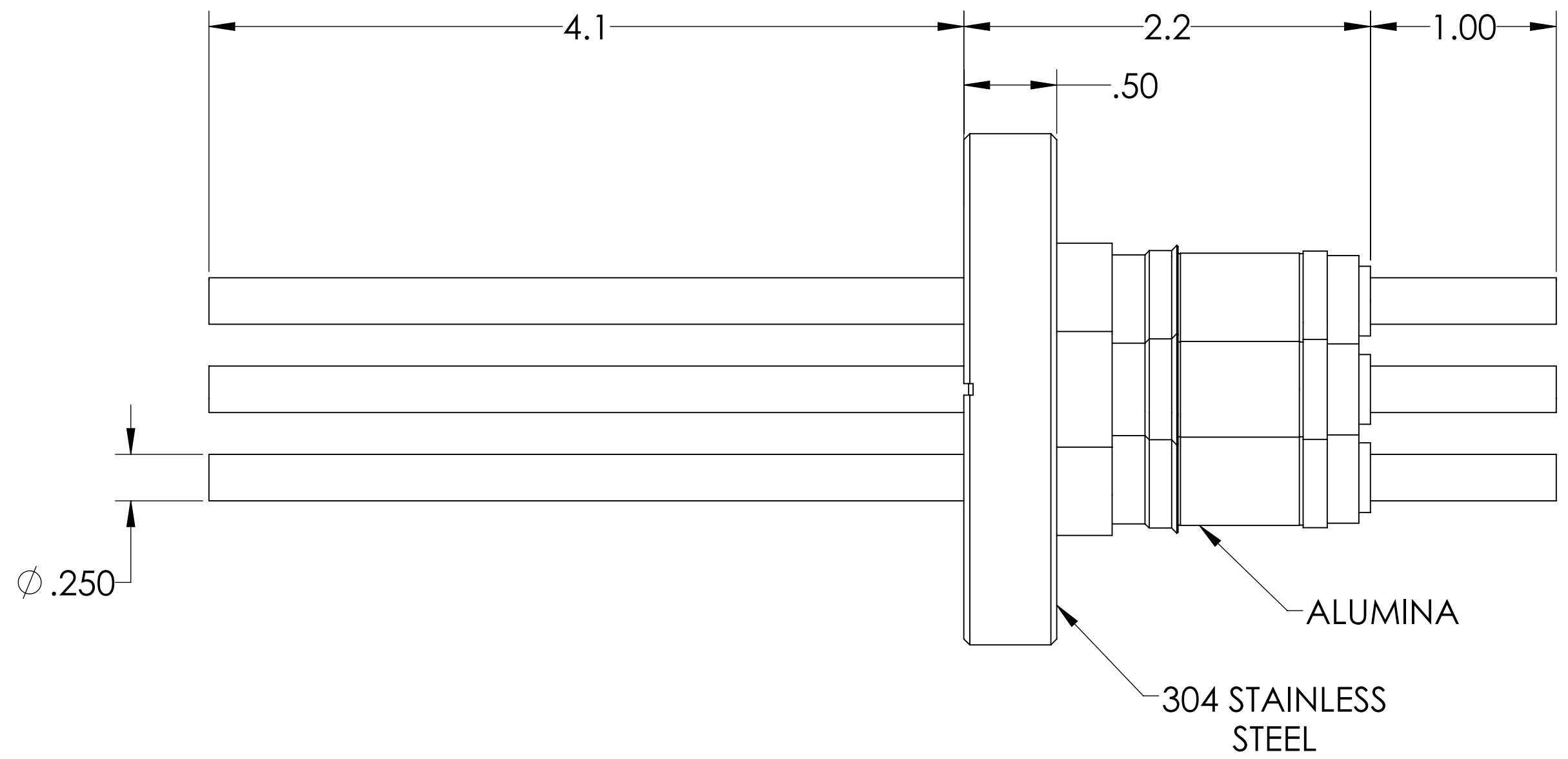
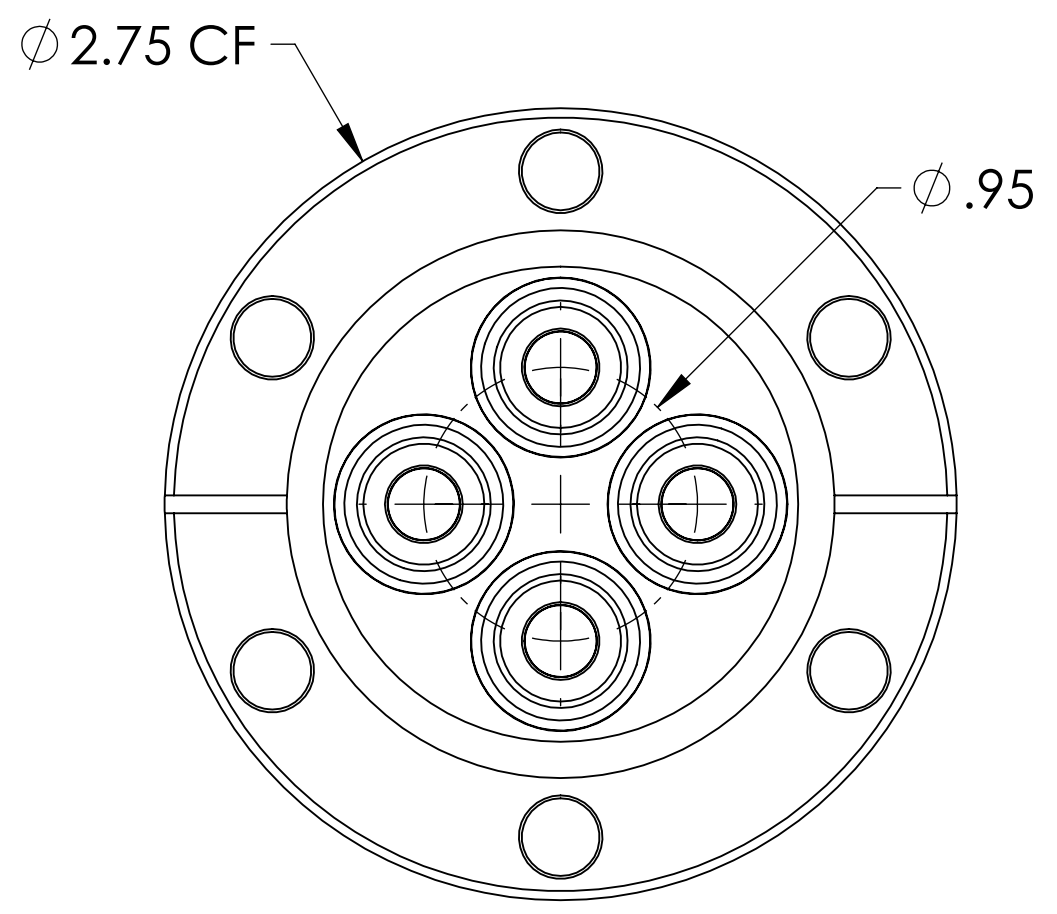
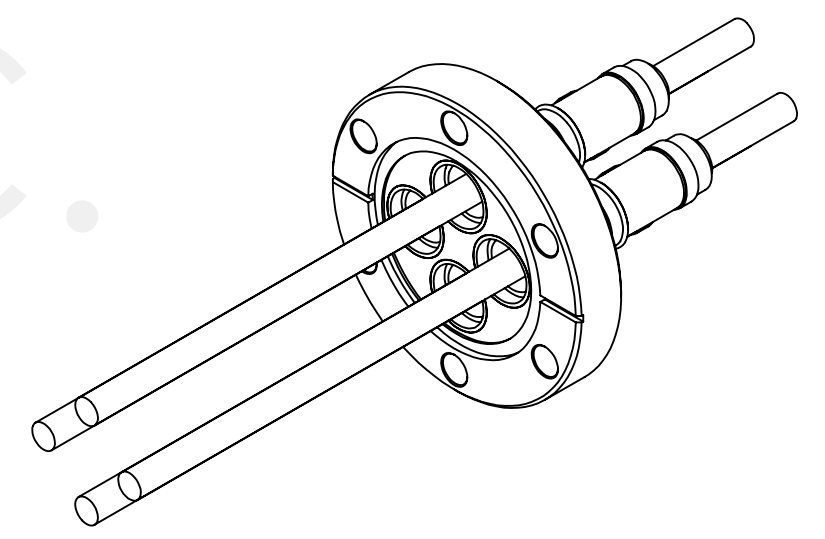


MPF PRODUCTS INC.



PART #	CONDUCTOR TYPE	CONDUCTOR MATERIAL	AMPS
A0063-1-CF	ROD	OFHC COPPER	180
A0063-2-CF	TUBE (.032 WALL)	OFHC COPPER	N/A
A0063-3-CF	ROD	304 STN STL	7
A0063-4-CF	TUBE (.032 WALL)	304 STN STL	N/A
A0063-5-CF	ROD	NICKEL 200	55
A0063-6-CF	TUBE (.032 WALL)	NICKEL 200	N/A
A0063-7-CF	ROD	MOLYBDNUM	93

- NOTE:
- VOLTAGE: 12,000 VOLTS DC
 - CURRENT: SEE TABLE
 - TEMPERATURE RATING: -100 TO 450°C

Power Feedthrough, 12 KV, 4 Pins, 0.25" Conductor, 2.75" Conflat Flange, UHV Rated, Bakeable to 450°C

UNLESS OTHERWISE SPECIFIED:		QUOTATION #		N/A	
DIMENSIONS ARE IN INCHES TOLERANCES:		NAME	DATE	MPF PRODUCTS INC. TITLE: POWER FEEDTHROUGH, 12 KV, 4 PINS, 0.25" CONDUCTOR, 2.75" CONFLAT FLANGE DOWNLOADED FROM MPFPI.COM DWG. NO. A0063 REV	
ANGULAR: MACH ± 1/2"		DRAWN	9/11/2015		
TWO PLACE DECIMAL ± .030		CHECKED	9/11/2015		
THREE PLACE DECIMAL ± .015		ENG APPR.	9/11/2015		
MATERIAL		THIRD ANGLE:		APPLICATION: NEXT ASSY USED ON	
FINISH					
PLATING		SURFACE FINISH: 63 OR BETTER			
UNLESS OTHERWISE SPECIFIED:		ALL DIAMETERS CONCENTRIC WITHIN .005. REMOVE ALL BURRS AND SHARP EDGES		Tuesday, August 13, 2019 8:19:26 AM	