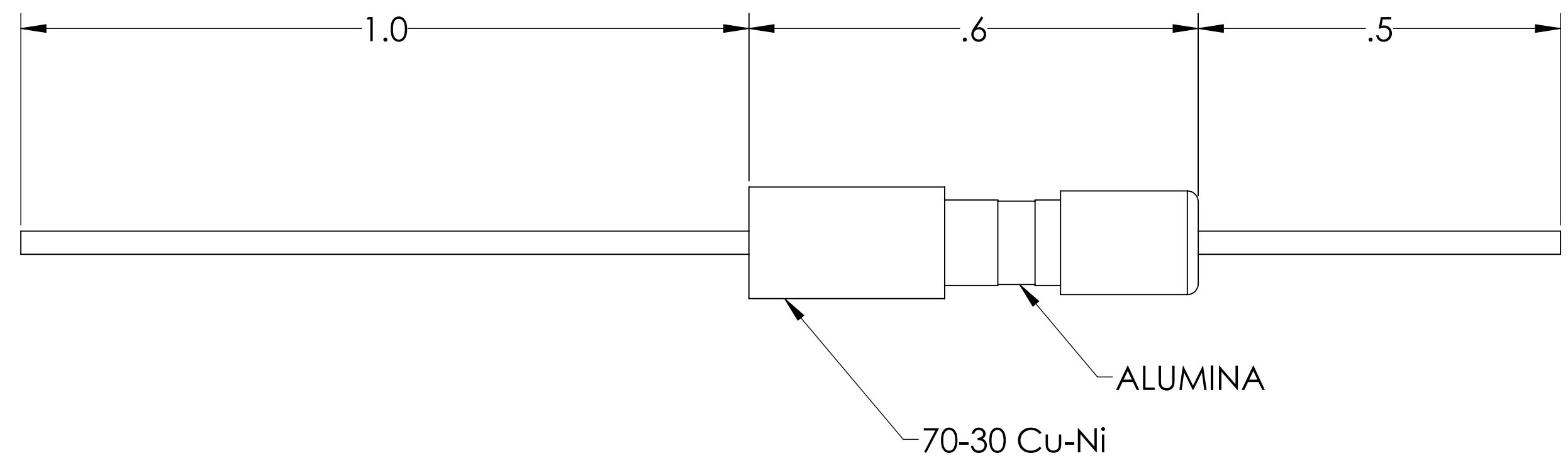
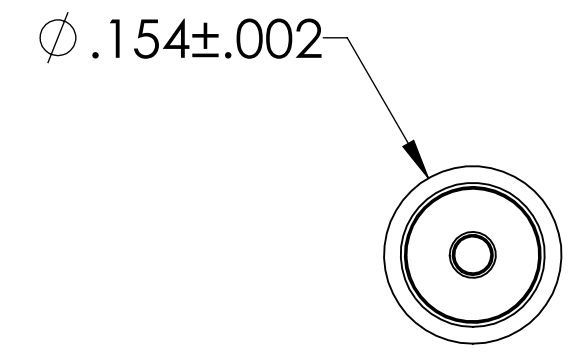
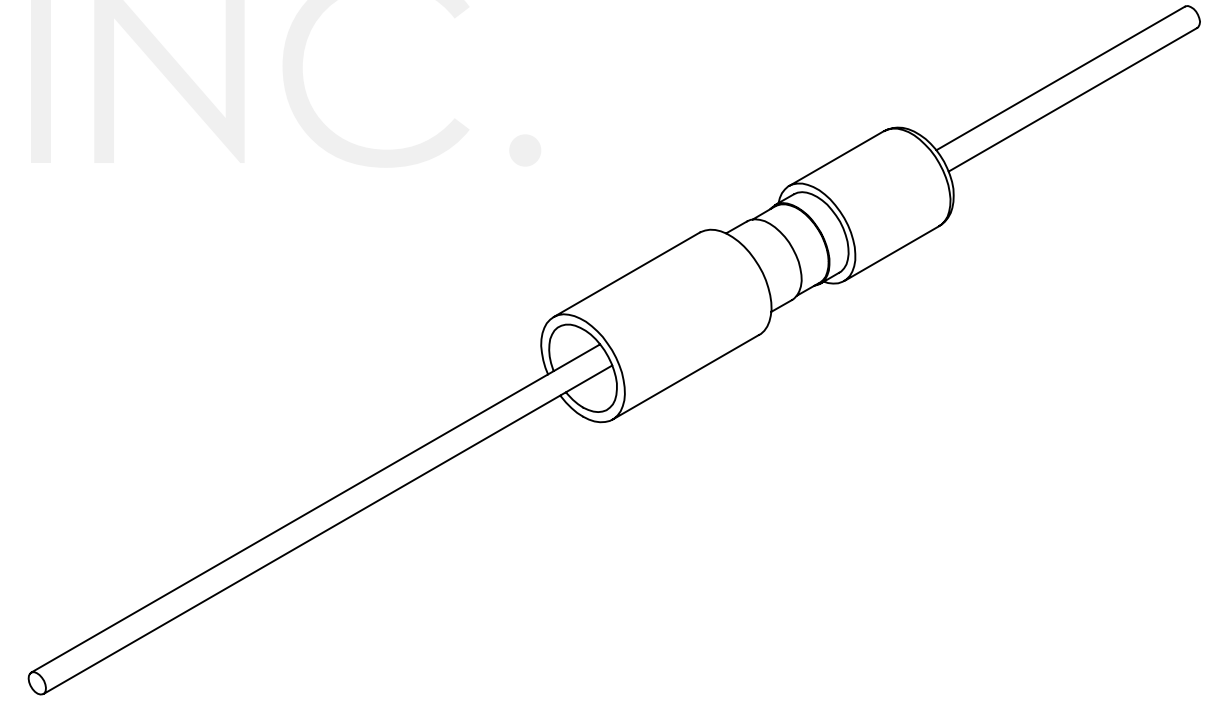


MPF PRODUCTS INC.



PART #	CONDUCTOR MATERIAL	CURRENT RATING
A0070-1-W	CONSTANTAN	2 AMPS
A0070-2-W	OFHC COPPER	15 AMPS
A0070-3-W	304 STAINLESS STEEL	1 AMP

- NOTE:
- VOLTAGE: 500 VOLTS DC
 - CURRENT: SEE TABLE
 - TEMPERATURE RATING: -200 TO 450°C

Power Feedthrough, 500 Volts, 1 Pin, 0.032" Conductor, 0.154" Dia 70-30 Cu-Ni Weld Adapter, UHV Rated, Bakeable to 450°C

UNLESS OTHERWISE SPECIFIED:		QUOTATION #		N/A		
DIMENSIONS ARE IN INCHES		NAME	DATE	MPF PRODUCTS INC. TITLE: POWER FEEDTHROUGH, 500 VOLTS, 1 PIN, 0.154" WELD ADAPTER DOWNLOADED FROM MPFPI.COM DWG. NO. A0070 REV		
TOLERANCES:		DRAWN	WJ			9/11/2015
ANGULAR: MACH ± 1/2°		CHECKED				9/11/2015
TWO PLACE DECIMAL ± .030		ENG APPR.	WJ			9/11/2015
THREE PLACE DECIMAL ± .015		THIRD ANGLE:				
MATERIAL		APPLICATION				
		NEXT ASSY	USED ON			
FINISH	SURFACE FINISH: 63 OR BETTER	UNLESS OTHERWISE SPECIFIED:		Friday, October 12, 2018 7:59:26 AM		
PLATING	ALL DIAMETERS CONCENTRIC WITHIN .005. REMOVE ALL BURRS AND SHARP EDGES					