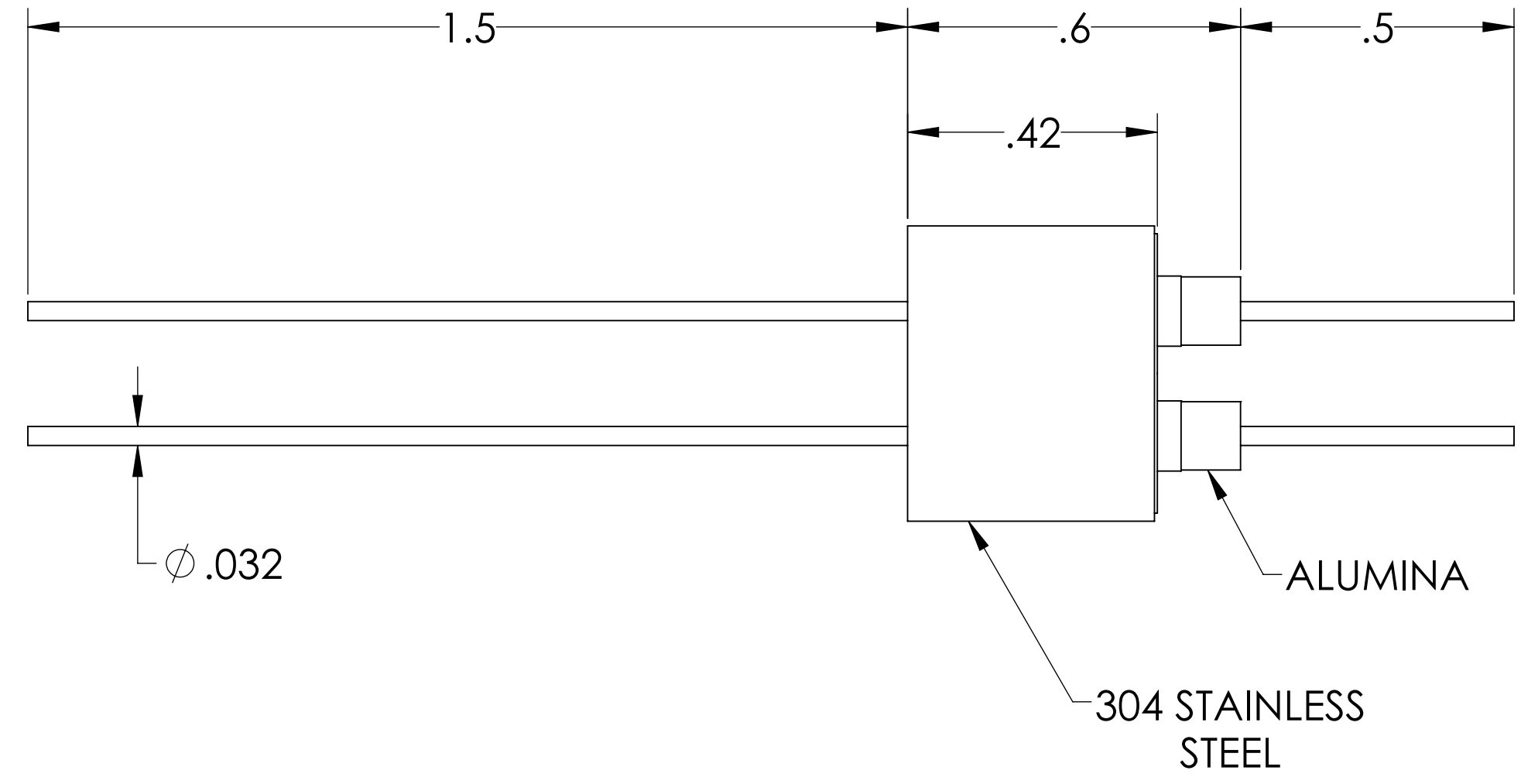
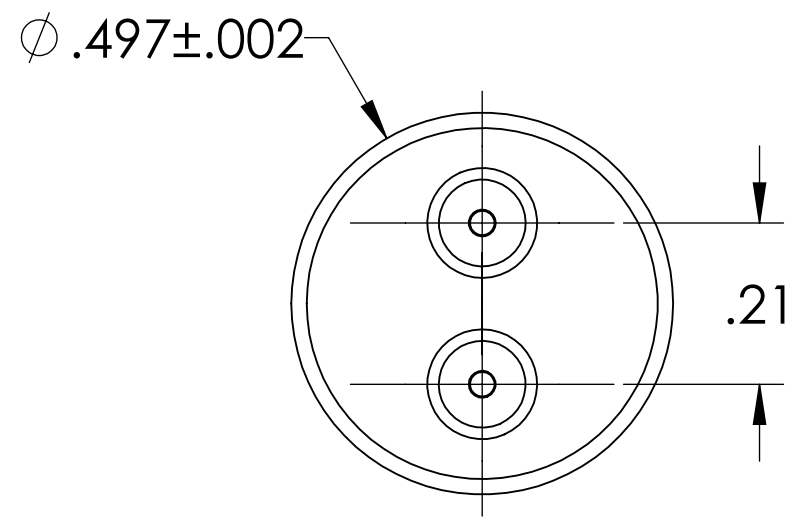
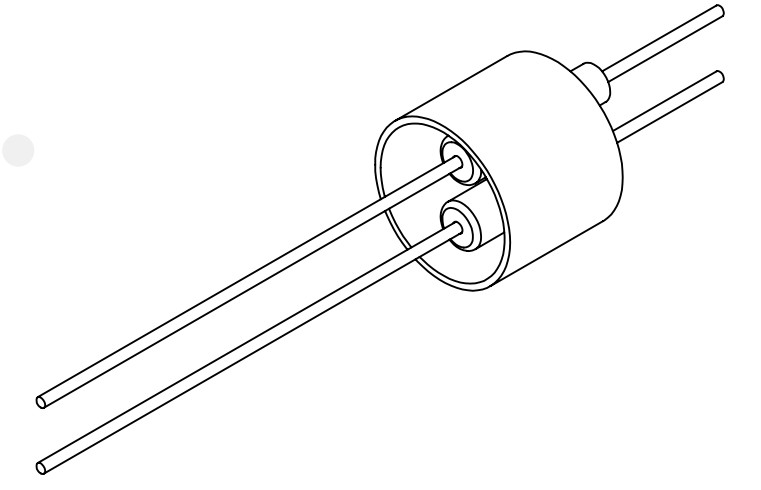


# MPF PRODUCTS INC.



PART #	CONDUCTOR MATERIAL	CURRENT RATING
A0078-1-W	NICKEL 200	5 AMPS
A0078-2-W	304 STAINLESS STEEL	1 AMP
A0078-3-W	OFHC COPPER	15 AMPS
A0078-4-W	MOLYBDENUM	8 AMPS

- NOTE:
1. VOLTAGE: 500 VOLTS DC
  2. CURRENT: SEE TABLE
  3. TEMPERATURE RATING: -100 TO 450°C

Power Feedthrough, 500 Volts, 2 Pins, 0.032" Conductor, 0.497" Dia Stainless Steel Weld Adapter, UHV Rated, Bakeable to 450°C

UNLESS OTHERWISE SPECIFIED:	QUOTATION #	N/A
DIMENSIONS ARE IN INCHES TOLERANCES:	NAME	DATE
ANGULAR: MACH $\pm 1/2^\circ$	DRAWN	9/11/2015
TWO PLACE DECIMAL $\pm .030$	CHECKED	9/11/2015
THREE PLACE DECIMAL $\pm .015$	ENG APPR.	WJ 9/11/2015
MATERIAL	THIRD ANGLE:	
FINISH	APPLICATION	
PLATING	NEXT ASSY USED ON	
	SURFACE FINISH:	63/ OR BETTER
	UNLESS OTHERWISE SPECIFIED:	
	ALL DIAMETERS CONCENTRIC WITHIN .005. REMOVE ALL BURRS AND SHARP EDGES	
	TITLE: <b>POWER FEEDTHROUGH,                  500 VOLTS, 2 PINS,                  0.497" WELD ADAPTER</b>	
	DWG. NO. <b>A0078</b>	
	Friday, October 12, 2018 8:34:17 AM	