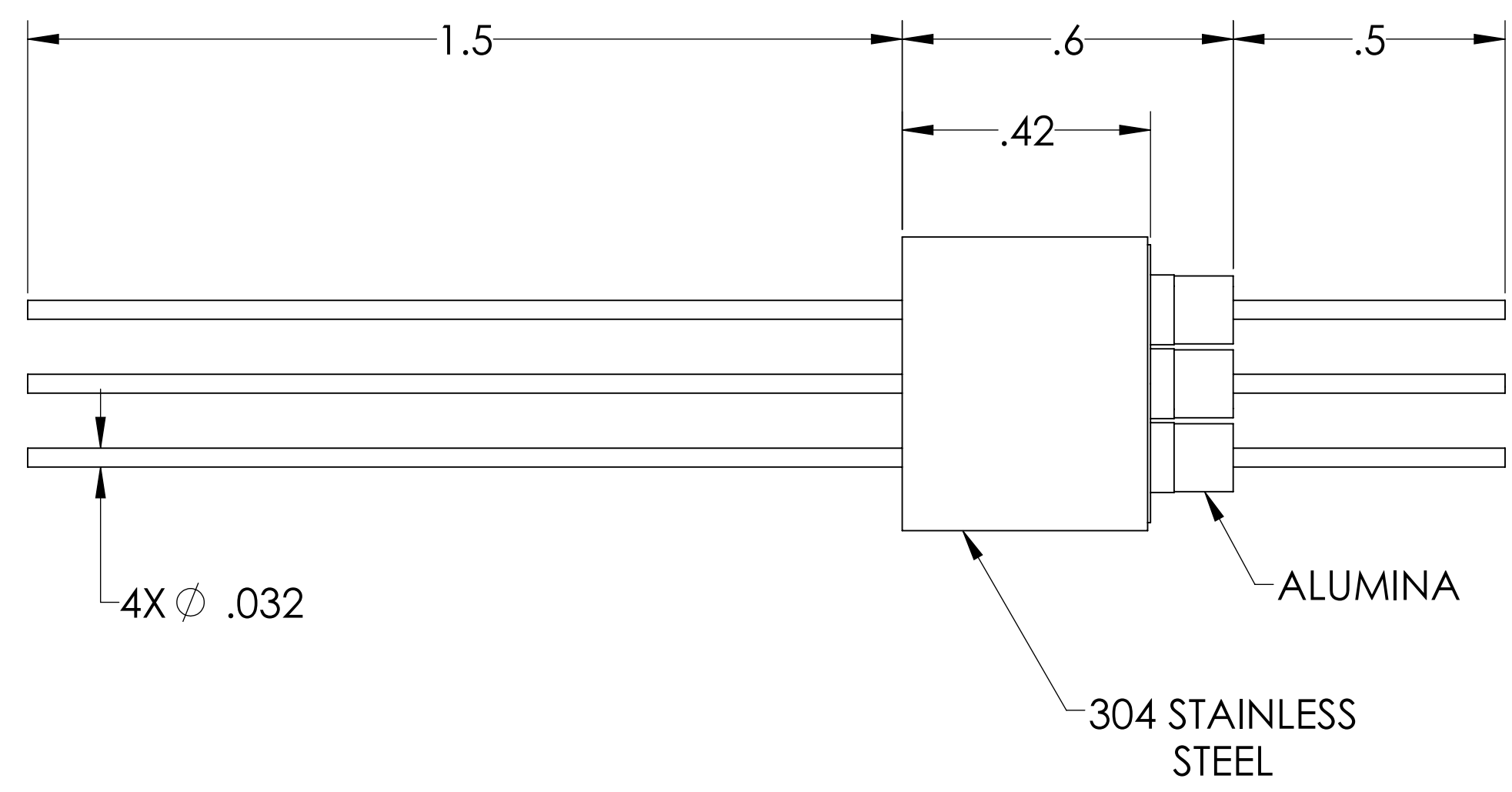
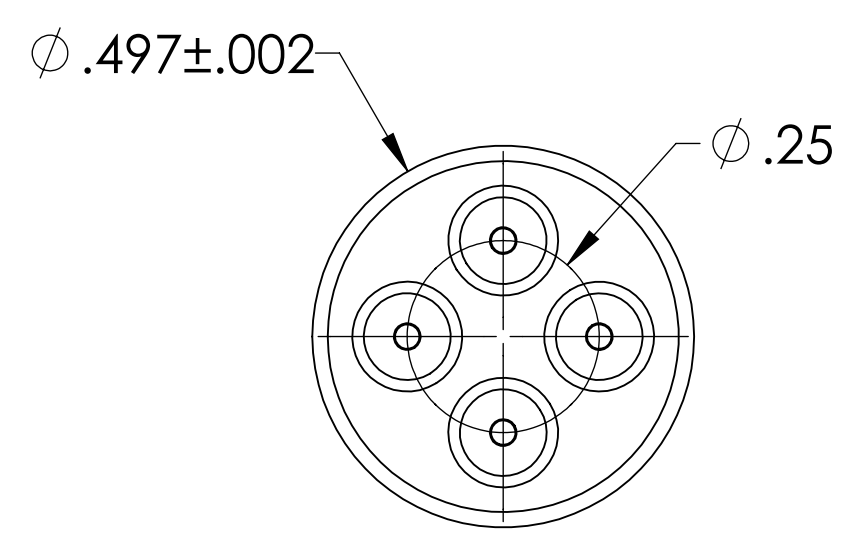
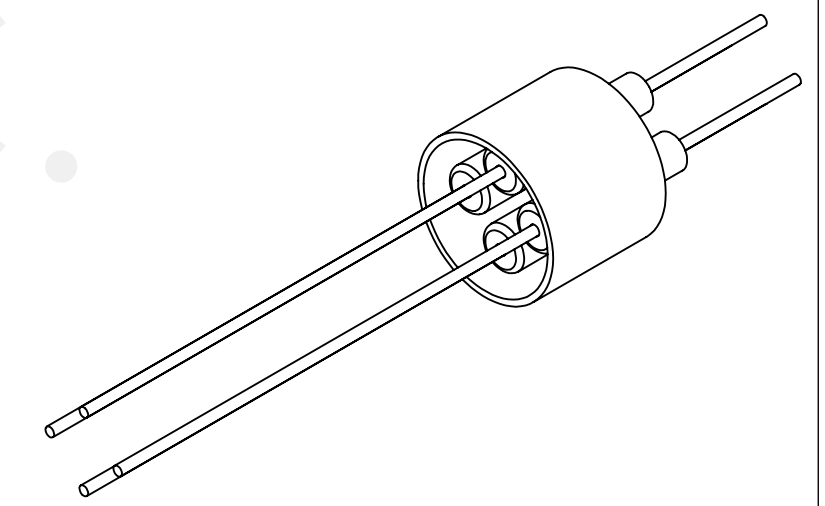


MPF PRODUCTS INC.



PART #	CONDUCTOR MATERIAL	CURRENT RATING
A0086-1-W	NICKEL 200	5 AMPS
A0086-2-W	304 STAINLESS STEEL	1 AMP
A0086-3-W	OFHC COPPER	15 AMPS
A0086-4-W	MOLYBDENUM	8 AMPS

NOTE:
 1. VOLTAGE: 500 VOLTS DC
 2. CURRENT: SEE TABLE
 3. TEMPERATURE RATING: -100 TO 450°C

Power Feedthrough, 500 Volts, 4 Pins, 0.032" Conductor, 0.497" Dia Stainless Steel Weld Adapter, UHV Rated, Bakeable to 450°C

UNLESS OTHERWISE SPECIFIED:		QUOTATION #		N/A		
DIMENSIONS ARE IN INCHES		NAME	DATE	MPF PRODUCTS INC. TITLE: POWER FEEDTHROUGH, 500 VOLTS, 4 PINS, 0.497" WELD ADAPTER DOWNLOAD FROM MPFPI.COM DWG. NO. A0086		
TOLERANCES:		DRAWN	WJ			9/11/2015
ANGULAR: MACH ± 1/2°		CHECKED				9/11/2015
TWO PLACE DECIMAL ± .030		ENG APPR.	WJ			9/11/2015
THREE PLACE DECIMAL ± .015		THIRD ANGLE:				
MATERIAL						
APPLICATION		NEXT ASSY		USED ON		
FINISH		SURFACE FINISH:		63/ OR BETTER		
PLATING		UNLESS OTHERWISE SPECIFIED:		ALL DIAMETERS CONCENTRIC WITHIN .005. REMOVE ALL BURRS AND SHARP EDGES		
		Friday, October 12, 2018 8:16:14 AM		REV		