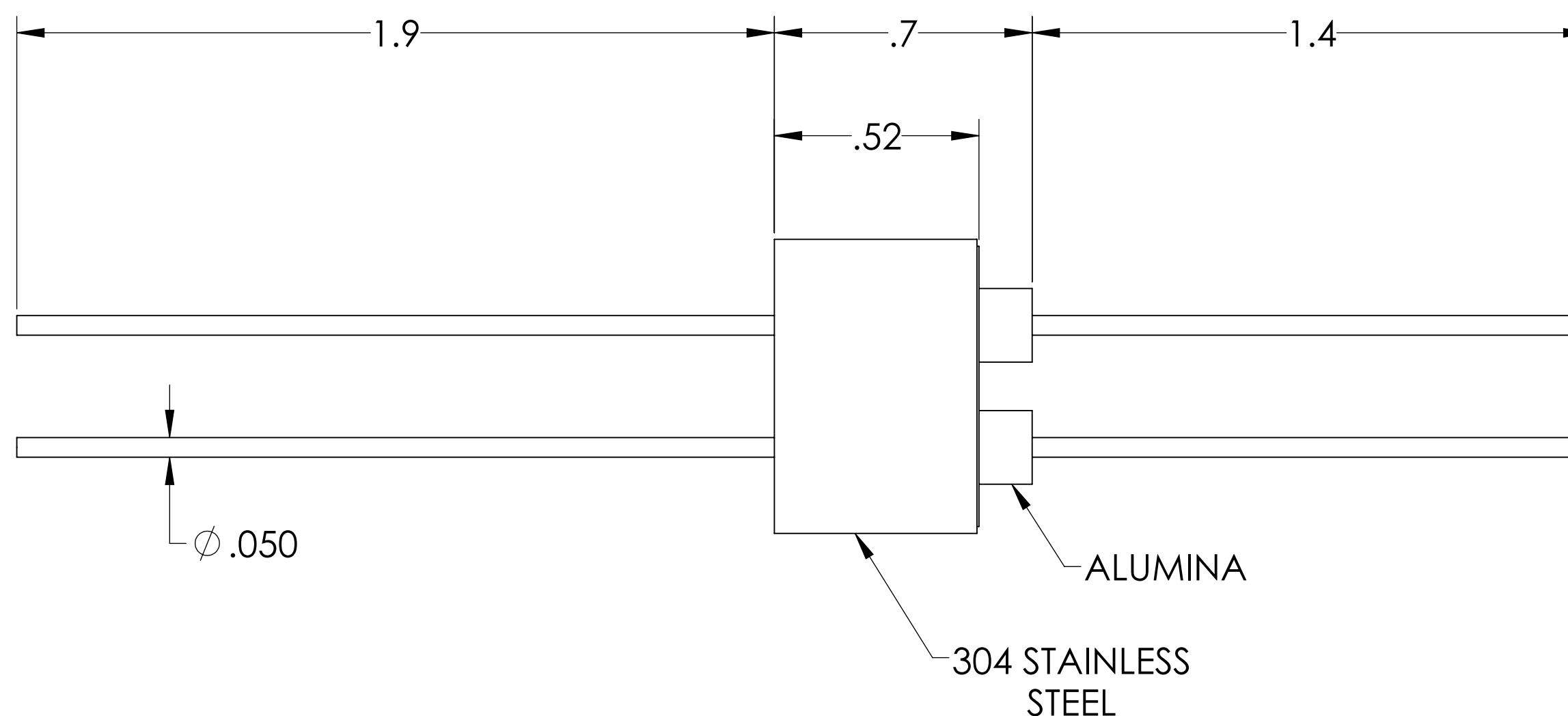
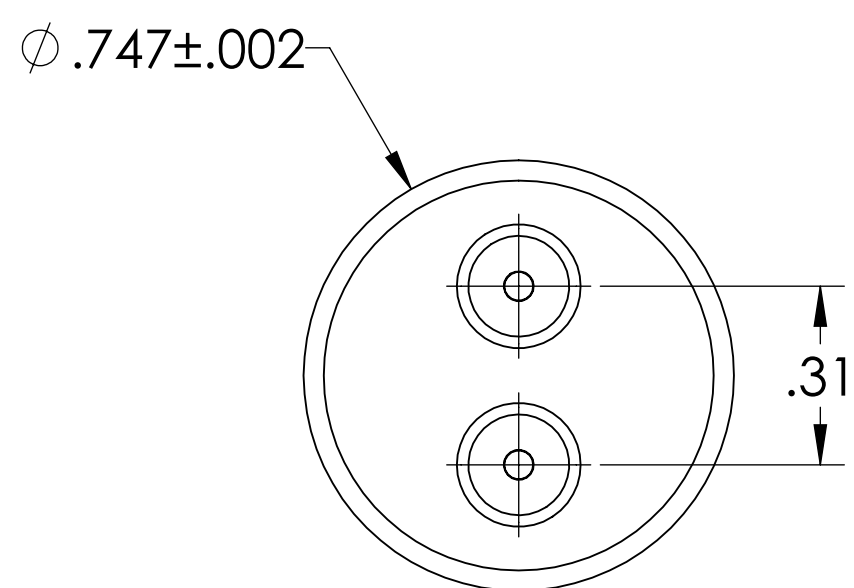
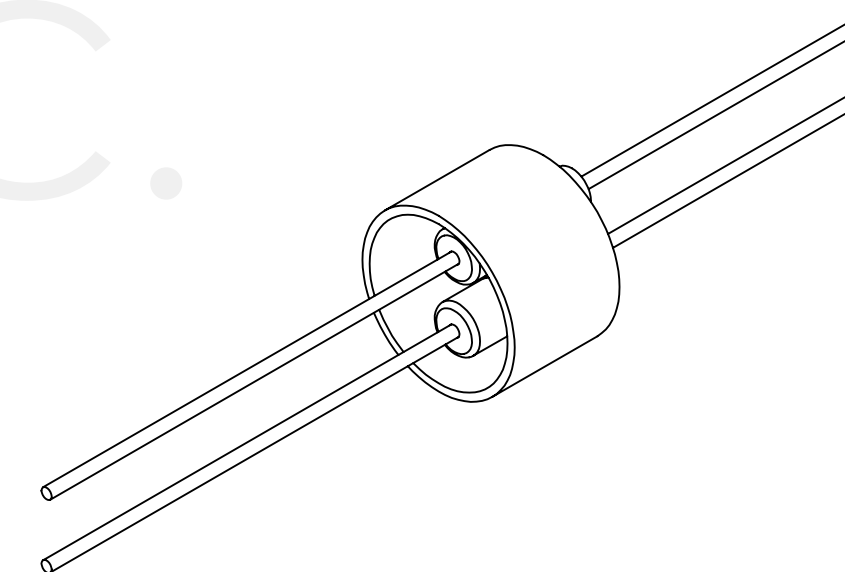


MPF PRODUCTS INC.



PART #	CONDUCTOR MATERIAL	CURRENT RATING
A0087-1-W	NICKEL 200	8 AMPS
A0087-2-W	304 STAINLESS STEEL	1 AMP
A0087-3-W	OFHC COPPER	25 AMPS
A0087-4-W	MOLYBDENUM	13 AMPS

NOTE:

1. VOLTAGE: 1000 VOLTS DC
2. CURRENT: SEE TABLE
3. TEMPERATURE RATING: -100 TO 450°C

Power Feedthrough, 1000 Volts, 2 Pins, 0.050" Conductor, 0.747" Dia Stainless Steel Weld Adapter, UHV Rated, Bakeable to 450°C

UNLESS OTHERWISE SPECIFIED:	QUOTATION #	N/A
DIMENSIONS ARE IN INCHES TOLERANCES:	NAME	DATE
ANGULAR: MACH $\pm 1/2^\circ$	DRAWN	9/11/2015
TWO PLACE DECIMAL $\pm .030$	CHECKED	9/11/2015
THREE PLACE DECIMAL $\pm .015$	ENG APPR.	9/11/2015
MATERIAL	THIRD ANGLE:	
APPLICATION		
NEXT ASSY	USED ON	
FINISH	SURFACE FINISH:	63/ OR BETTER
PLATING	UNLESS OTHERWISE SPECIFIED:	
	ALL DIAMETERS CONCENTRIC WITHIN .005. REMOVE ALL BURRS AND SHARP EDGES	
	TITLE:	MPF PRODUCTS INC.
		POWER FEEDTHROUGH, 1000 VOLTS, 2 PINS, 0.747" WELD ADAPTER
	DOWNLOADED FROM MPFPI.COM	
	DWG. NO.	A0087
	REV	
	Friday, October 12, 2018 8:30:47 AM	