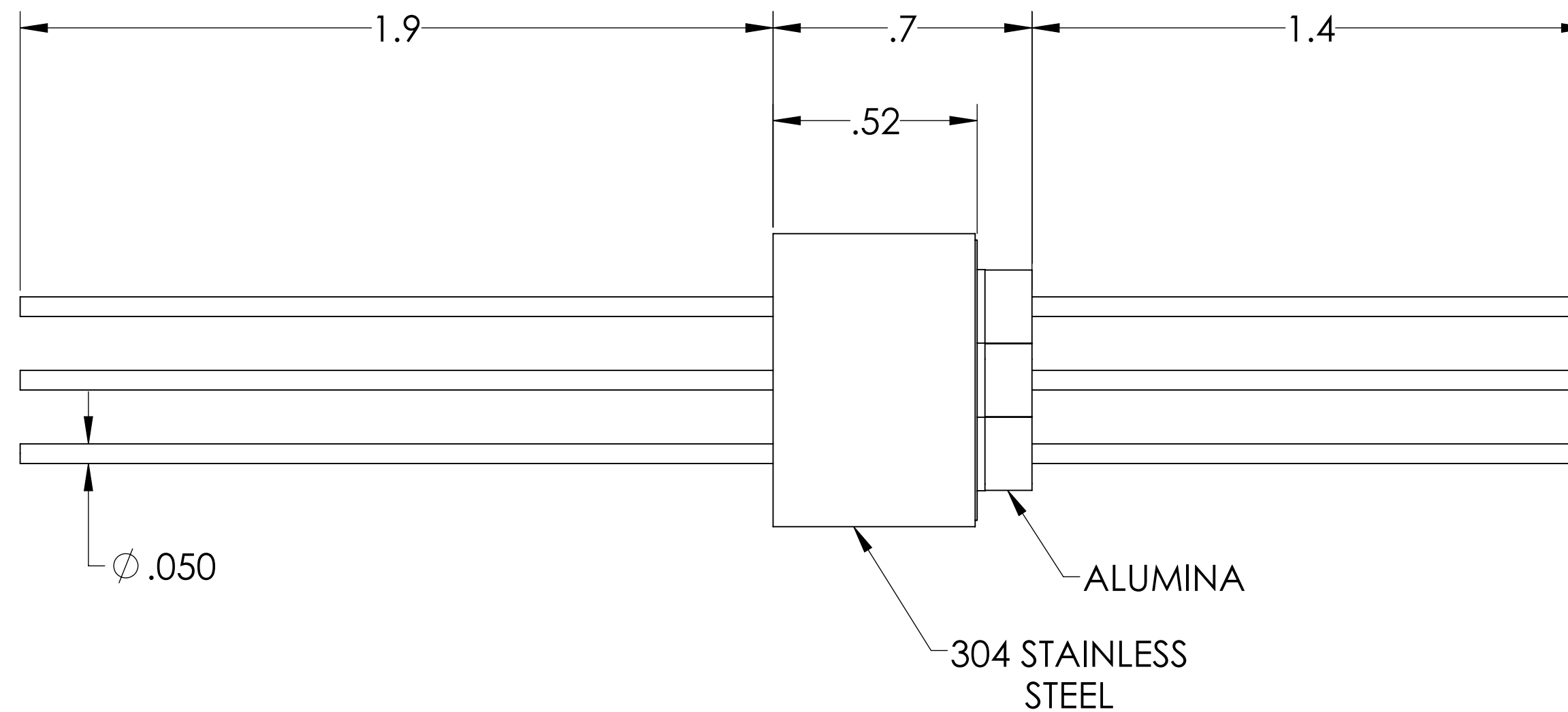
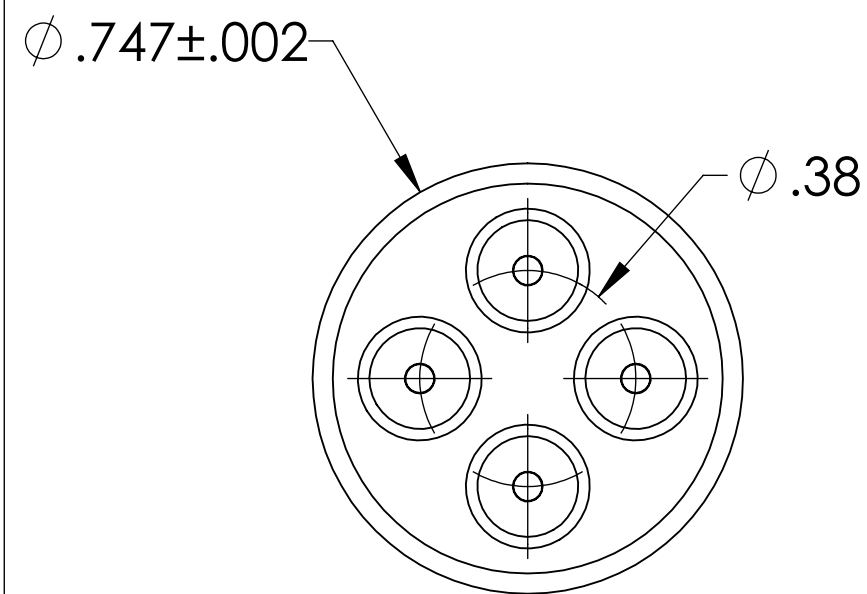
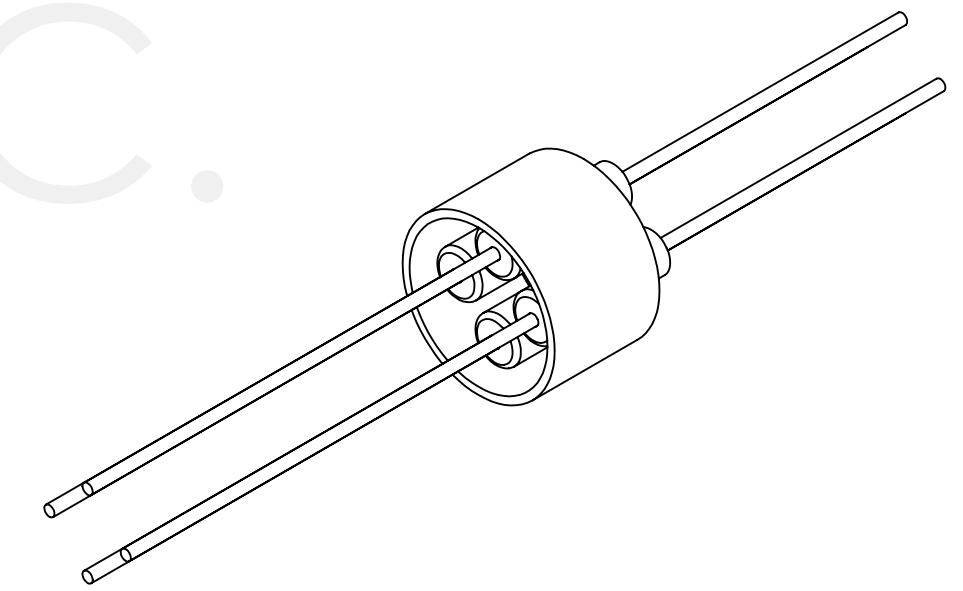


# MPF PRODUCTS INC.



PART #	CONDUCTOR MATERIAL	CURRENT RATING
A0088-1-W	NICKEL 200	8 AMPS
A0088-2-W	304 STAINLESS STEEL	1 AMP
A0088-3-W	OFHC COPPER	25 AMPS
A0088-4-W	MOLYBDENUM	13 AMPS

**NOTE:**

1. VOLTAGE: 1000 VOLTS DC
2. CURRENT: SEE TABLE
3. TEMPERATURE RATING: -100 TO 450°C

Power Feedthrough, 1000 Volts, 4 Pins, 0.050" Conductor, 0.747" Dia Stainless Steel Weld Adapter, UHV Rated, Bakeable to 450°C

UNLESS OTHERWISE SPECIFIED:		QUOTATION #		N/A		
DIMENSIONS ARE IN INCHES TOLERANCES:		NAME	DATE	<b>MPF PRODUCTS INC.</b> TITLE: <b>POWER FEEDTHROUGH,                  1000 VOLTS, 4 PINS,                  0.747" WELD ADAPTER</b>		
ANGULAR: MACH ± 1/2°		DRAWN	WJ			9/11/2015
TWO PLACE DECIMAL ± .030		CHECKED				9/11/2015
THREE PLACE DECIMAL ± .015		ENG APPR.	WJ			9/11/2015
MATERIAL		THIRD ANGLE:		DOWNLOAD FROM MPFPI.COM DWG. NO. <b>A0088</b>		
APPLICATION						
NEXT ASSY		USED ON				
FINISH		SURFACE FINISH:		WEDNESDAY, DECEMBER 12, 2018 1:04:13 PM		
PLATING		UNLESS OTHERWISE SPECIFIED:		REV		
		ALL DIAMETERS CONCENTRIC WITHIN .005. REMOVE ALL BURRS AND SHARP EDGES		A0088		