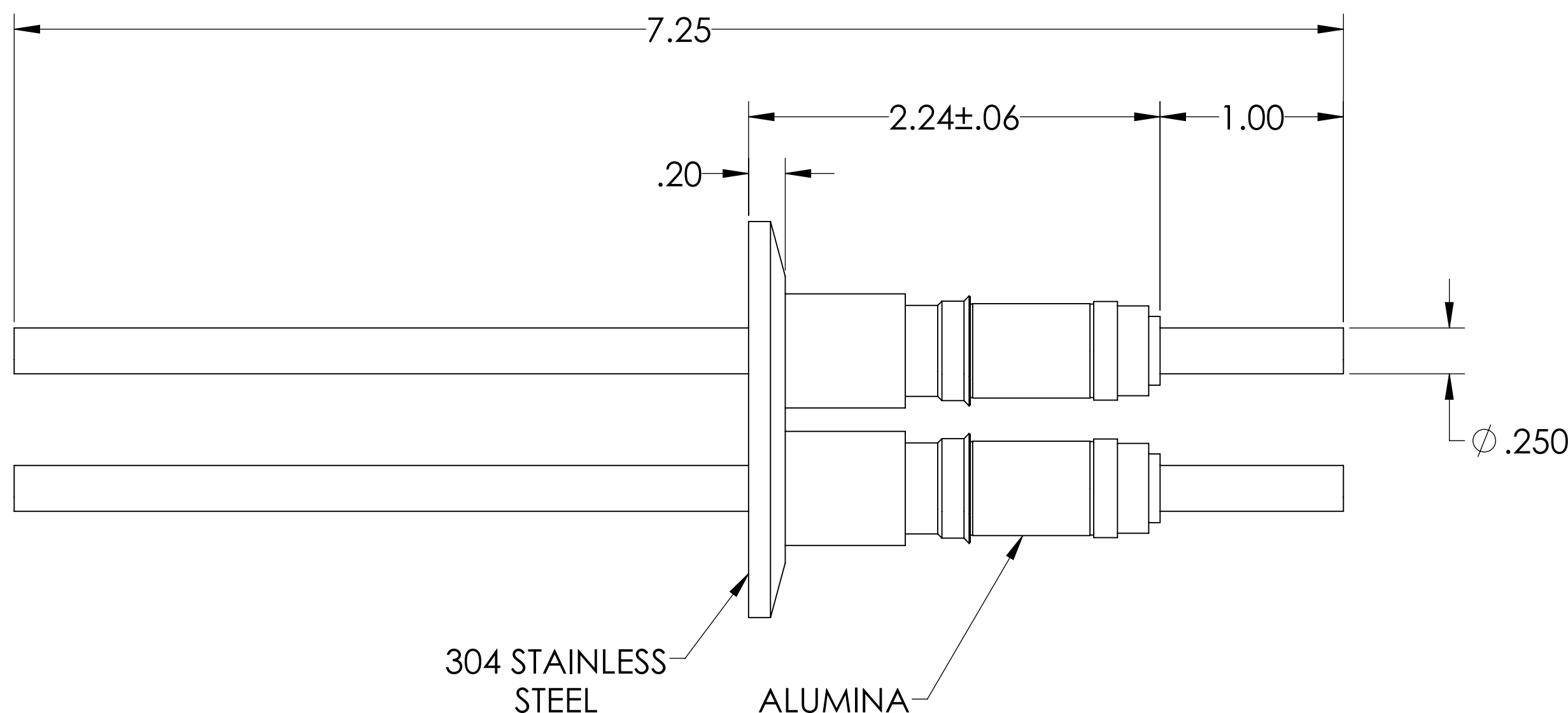
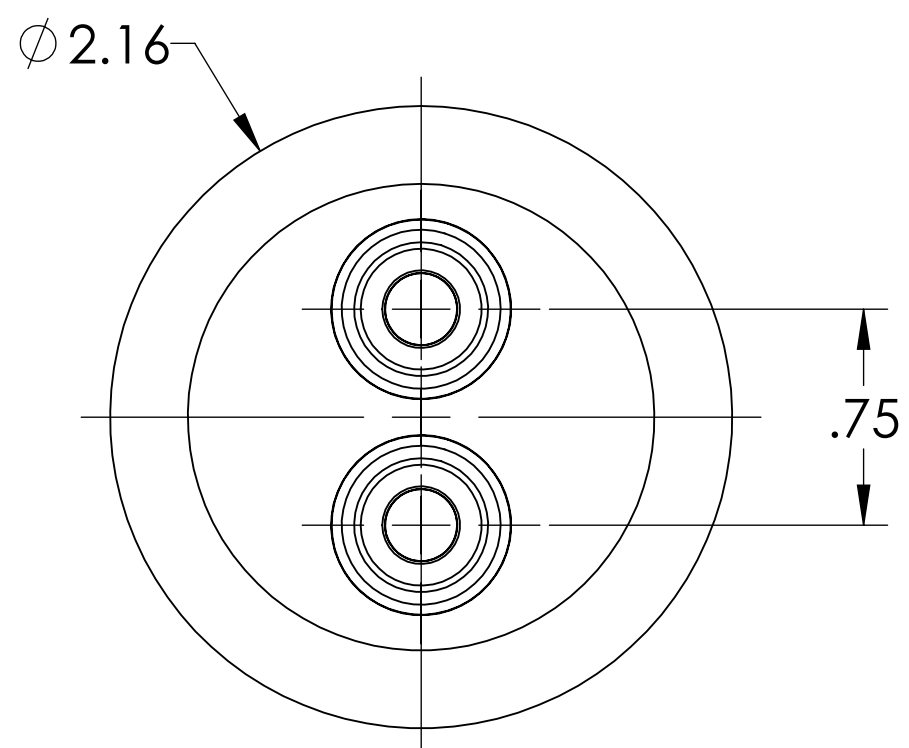
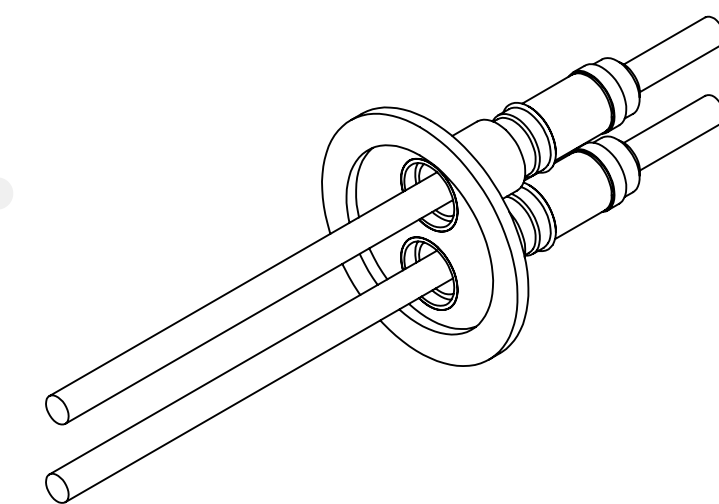


MPF PRODUCTS INC.



PART #	CONDUCTOR TYPE	CONDUCTOR MATERIAL	CURRENT RATING
A0114-1-QF	ROD	OFHC COPPER	180 AMPS
A0114-2-QF	TUBE (.032 WALL)	OFHC COPPER	N/A
A0114-3-QF	ROD	304 STAINLESS STEEL	7 AMPS
A0114-4-QF	TUBE (.032 WALL)	304 STAINLESS STEEL	N/A
A0114-5-QF	ROD	NICKEL 200	55 AMPS
A0114-6-QF	TUBE (.032 WALL)	NICKEL 200	N/A
A0114-7-QF	ROD	MOLYBDENUM	93 AMPS

NOTE:

- VOLTAGE: 12,000 VOLTS DC
- CURRENT: SEE TABLE
- TEMPERATURE RATING: -100 TO 450°C

Power Feedthrough, 12 KV, 2 Pins, 0.250" Conductor, 2.16" QF/KF, UHV Rated, Bakeable to 450°C

UNLESS OTHERWISE SPECIFIED:	QUOTATION #	N/A	
DIMENSIONS ARE IN INCHES TOLERANCES:	NAME	DATE	MPF PRODUCTS INC.
ANGULAR: MACH ± 1/2°	DRAWN	9/11/2015	
TWO PLACE DECIMAL ± .030	CHECKED	9/11/2015	
THREE PLACE DECIMAL ± .015	ENG APPR.	9/11/2015	
MATERIAL	THIRD ANGLE:	TITLE:	
		POWER FEEDTHROUGH, 12 KV, 2 PINS, 2.16" QF/KF	
FINISH	APPLICATION	DOWNLOADED FROM MPFPI.COM	
PLATING	NEXT ASSY	USED ON	DWG. NO.
	SURFACE FINISH:	63 OR BETTER	REV
	UNLESS OTHERWISE SPECIFIED:	A0114	
	ALL DIAMETERS CONCENTRIC WITHIN .005. REMOVE ALL BURRS AND SHARP EDGES	Tuesday, August 13, 2019 8:05:39 AM	