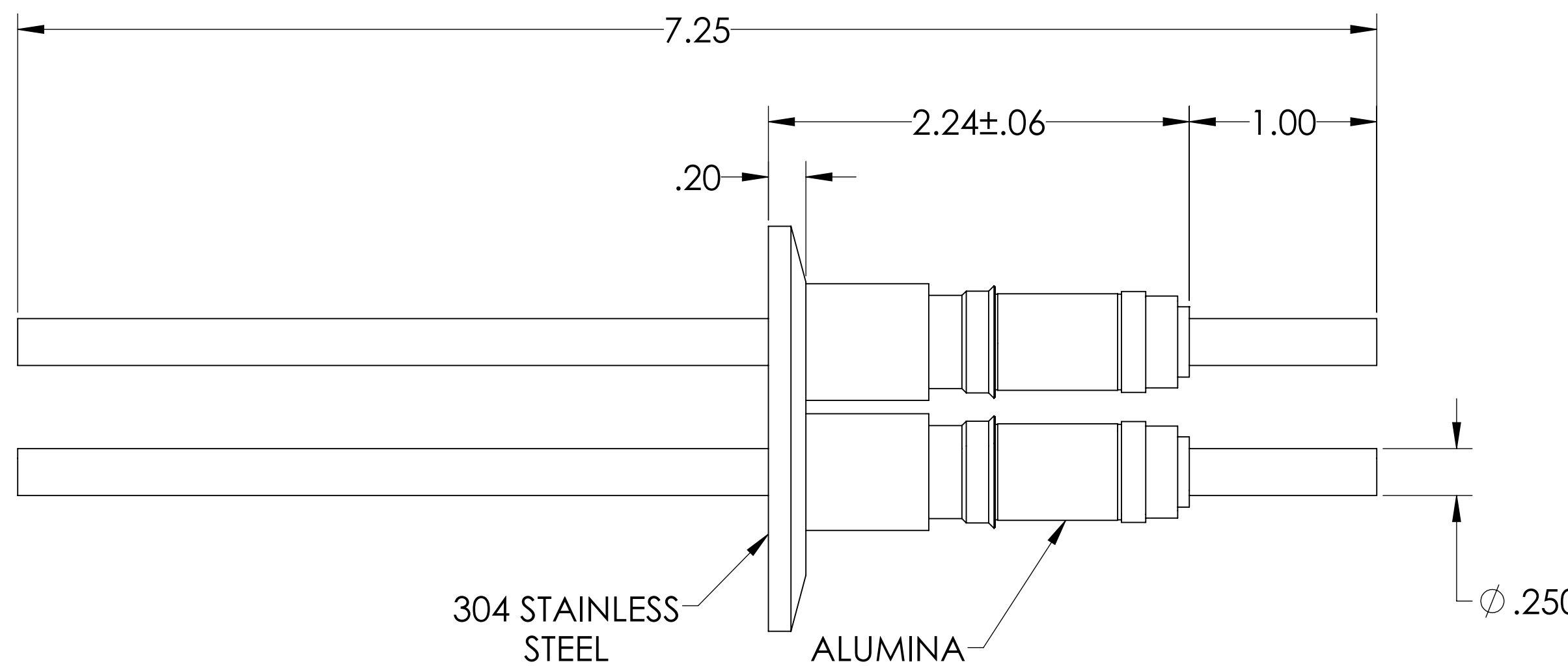
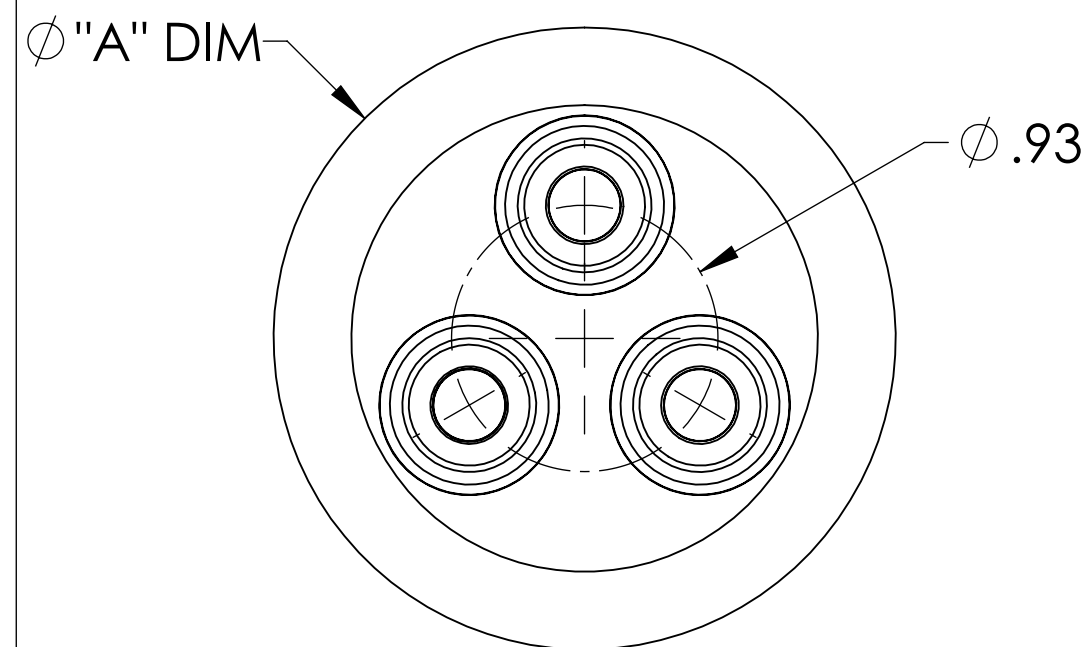
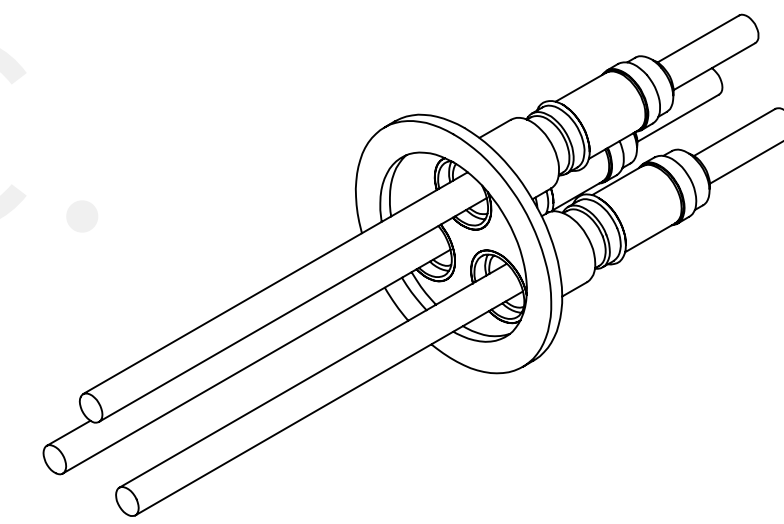


MPF PRODUCTS INC.



PART #	Ø "A" DIM	CONDUCTOR TYPE	CONDUCTOR MATERIAL	CURRENT RATING
A0115-1-QF	2.16	ROD	OFHC COPPER	180 AMPS
A0115-2-QF	2.16	TUBE (.032 WALL)	OFHC COPPER	N/A
A0115-3-QF	2.16	ROD	304 STAINLESS STEEL	7 AMPS
A0115-4-QF	2.16	TUBE (.032 WALL)	304 STAINLESS STEEL	N/A
A0115-5-QF	2.16	ROD	NICKEL 200	55 AMPS
A0115-6-QF	2.16	TUBE (.032 WALL)	NICKEL 200	N/A
A0115-7-QF	2.16	ROD	OFHC COPPER	180 AMPS
A0115-8-QF	2.95	TUBE (.032 WALL)	OFHC COPPER	N/A
A0115-9-QF	2.95	ROD	304 STAINLESS STEEL	7 AMPS
A0115-10-QF	2.95	TUBE (.032 WALL)	304 STAINLESS STEEL	N/A
A0115-11-QF	2.95	ROD	NICKEL 200	55 AMPS
A0115-12-QF	2.95	TUBE (.032 WALL)	NICKEL 200	N/A
A0115-13-QF	2.16	ROD	MOLYBDENUM	93 AMPS
A0115-14-QF	2.95	ROD	MOLYBDENUM	93 AMPS

- NOTE:
- VOLTAGE: 12,000 VOLTS DC
 - CURRENT: SEE TABLE
 - TEMPERATURE RATING: -100 TO 450°C

Power Feedthrough, 12 KV, 3 Pins, 0.250" Conductor, 2.16" and 2.95" QF/KF, UHV Rated, Bakeable to 450°C

UNLESS OTHERWISE SPECIFIED:		QUOTATION #		N/A		
DIMENSIONS ARE IN INCHES		NAME	DATE	MPF PRODUCTS INC. TITLE: POWER FEEDTHROUGH, 12 KV, 3 PINS, 2.16" QF/KF		
TOLERANCES:		DRAWN	WJ			9/11/2015
ANGULAR: MACH ± 1/2"		CHECKED	WJ			9/11/2015
TWO PLACE DECIMAL ± .030		ENG APPR.	WJ			9/11/2015
THREE PLACE DECIMAL ± .015		THIRD ANGLE:		DOWNLOAD FROM MPFPI.COM DWG. NO. A0115 REV		
MATERIAL						
FINISH		APPLICATION NEXT ASSY USED ON				
PLATING		SURFACE FINISH: 63 OR BETTER		UNLESS OTHERWISE SPECIFIED: ALL DIAMETERS CONCENTRIC WITHIN .005. REMOVE ALL BURRS AND SHARP EDGES		
		TUESDAY, AUGUST 13, 2019 8:04:31 AM				