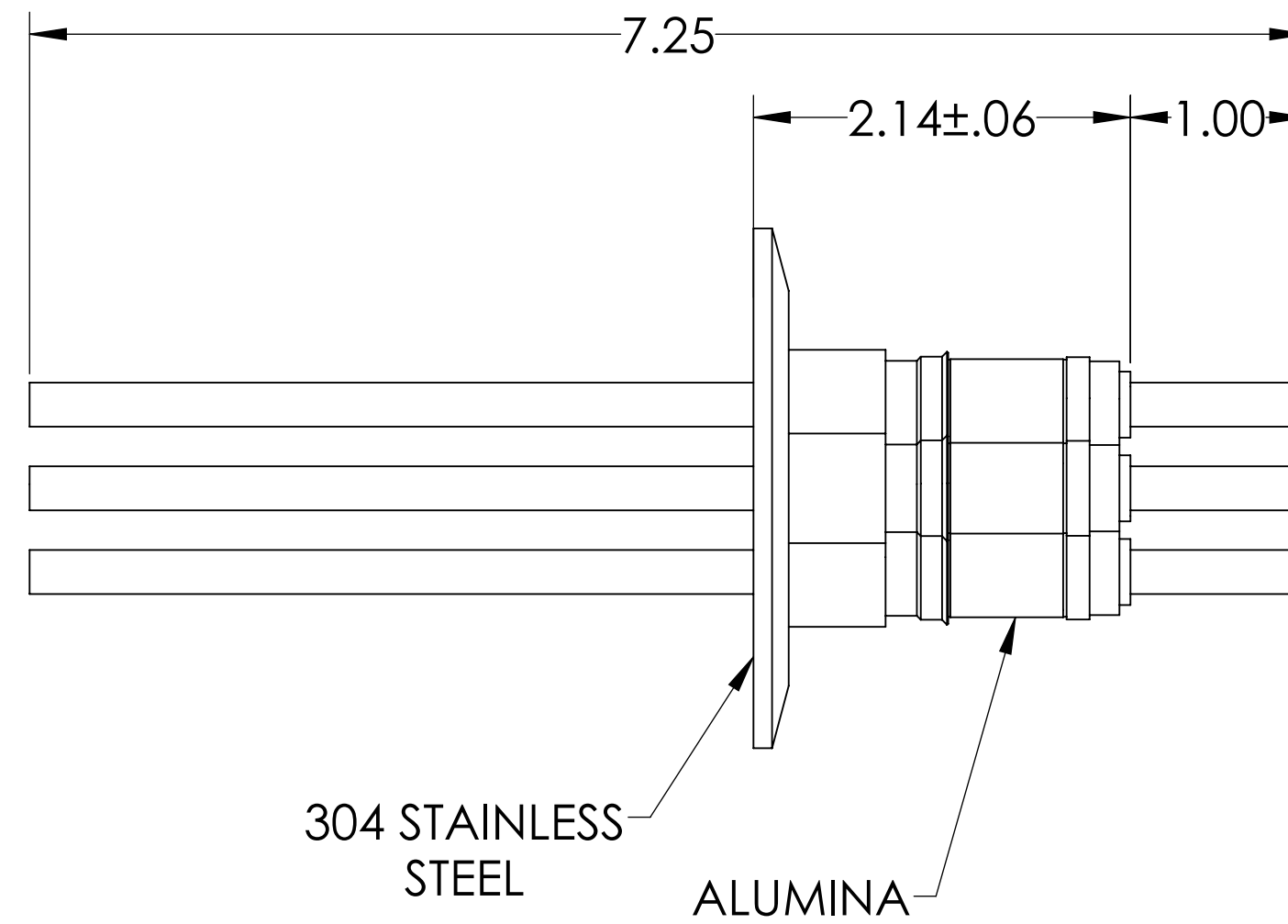
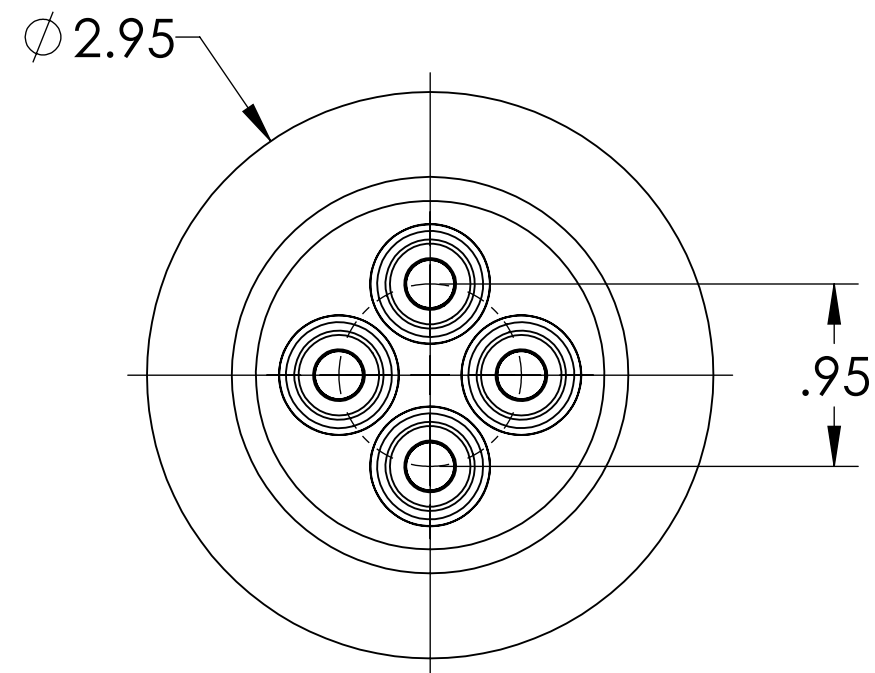
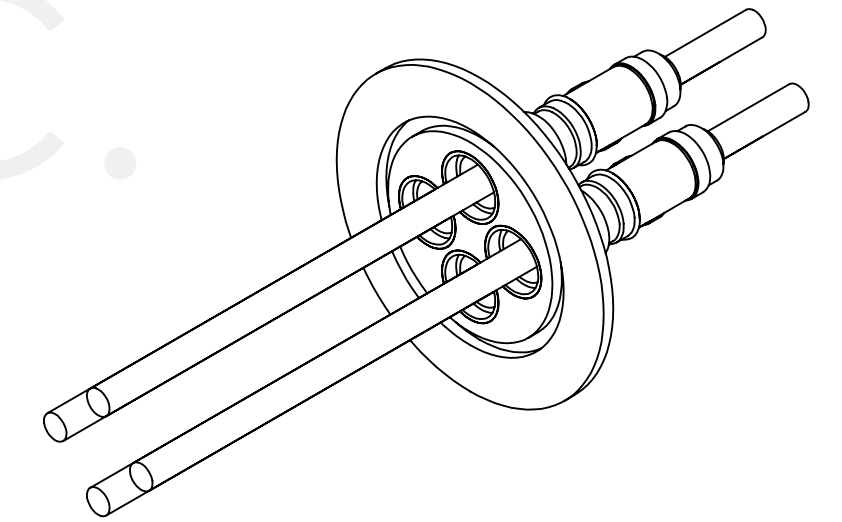


MPF PRODUCTS INC.



PART #	CONDUCTOR TYPE	CONDUCTOR MATERIAL	CURRENT RATING
A0116-1-QF	ROD	OFHC COPPER	180 AMPS
A0116-2-QF	TUBE (.032 WALL)	OFHC COPPER	N/A
A0116-3-QF	ROD	304 STAINLESS STEEL	7 AMPS
A0116-4-QF	TUBE (.032 WALL)	304 STAINLESS STEEL	N/A
A0116-5-QF	ROD	NICKEL 200	55 AMPS
A0116-6-QF	TUBE (.032 WALL)	NICKEL 200	N/A
A0116-7-QF	ROD	MOLYBDENUM	93 AMPS

NOTE:

1. VOLTAGE: 12,000 VOLTS DC
2. CURRENT: SEE TABLE
3. TEMPERATURE RATING: -100 TO 450°C

Power Feedthrough, 12 KV, 4 Pins, 0.250" Conductor, 2.95" QF/KF, UHV Rated, Bakeable to 450°C

UNLESS OTHERWISE SPECIFIED:		QUOTATION #		N/A	
DIMENSIONS ARE IN INCHES TOLERANCES:		NAME	DATE	MPF PRODUCTS INC.	
ANGULAR: MACH ± 1/2°		DRAWN	9/11/2015		
TWO PLACE DECIMAL ± .030		CHECKED	9/11/2015		
THREE PLACE DECIMAL ± .015		ENG APPR.	9/11/2015		
MATERIAL		THIRD ANGLE:		POWER FEEDTHROUGH, 12 KV, 4 PIN, 2.95" QF/KF	
FINISH		APPLICATION			
PLATING		NEXT ASSY	USED ON		
		SURFACE FINISH: 63 OR BETTER			
		UNLESS OTHERWISE SPECIFIED:		DOWNLOADED FROM MPFPI.COM	
		ALL DIAMETERS CONCENTRIC WITHIN .005. REMOVE ALL BURRS AND SHARP EDGES		DWG. NO. A0116	
				REV	
				Tuesday, August 13, 2019 8:03:06 AM	