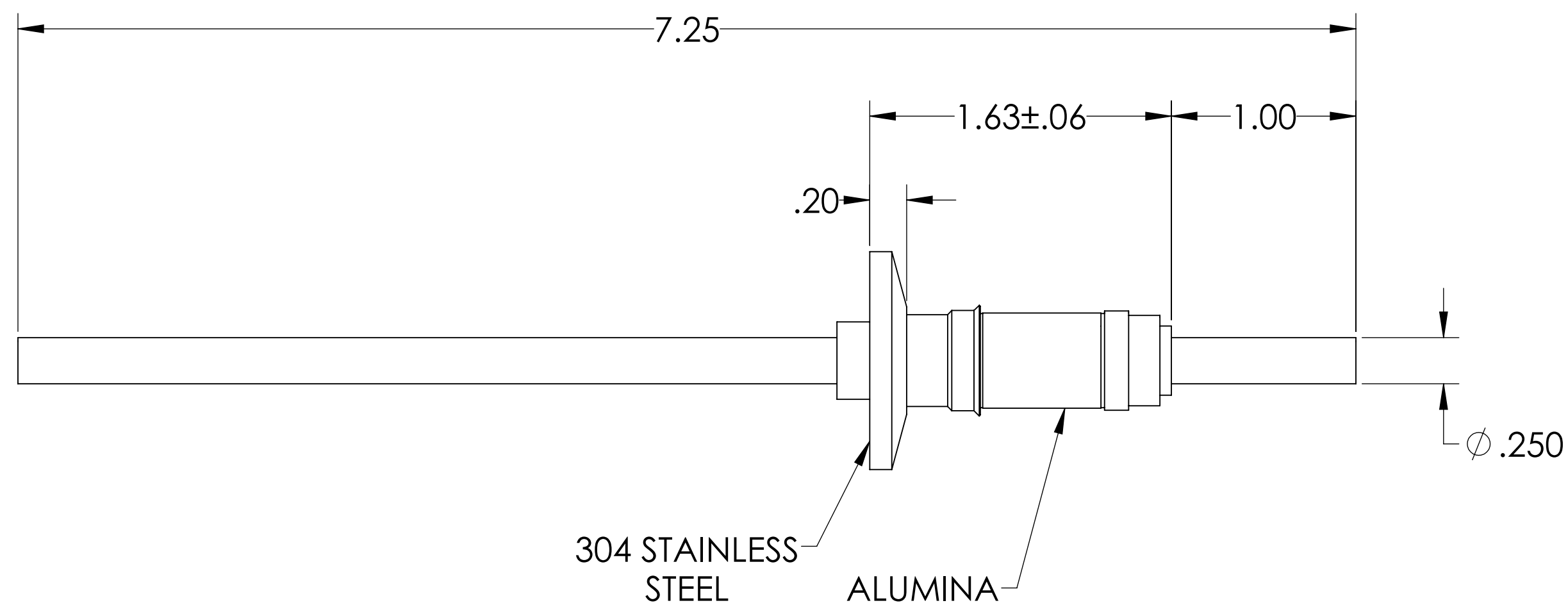
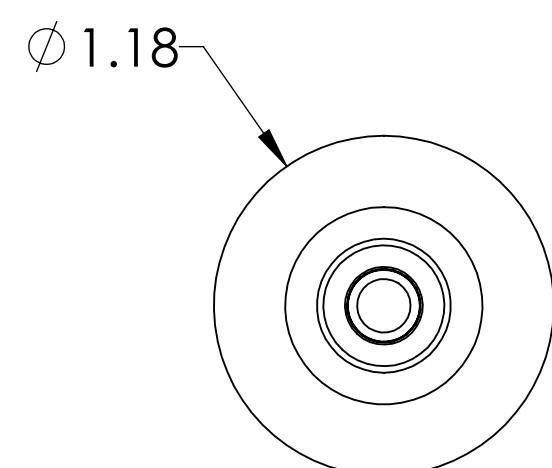
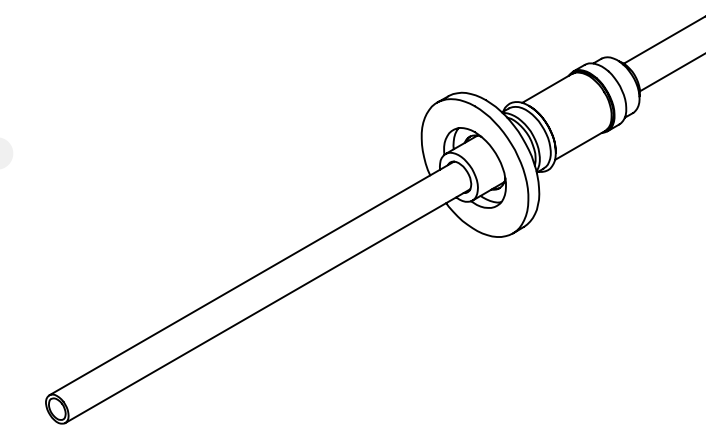


## MPF PRODUCTS INC.



PART #	CONDUCTOR TYPE	CONDUCTOR MATERIAL	CURRENT RATING
A0117-1-QF	ROD	OFHC COPPER	180 AMPS
A0117-2-QF	TUBE ( .032 WALL )	OFHC COPPER	N/A
A0117-3-QF	ROD	304 STN STL	7 AMPS
A0117-4-QF	TUBE ( .032 WALL )	304 STN STL	N/A
A0117-5-QF	ROD	NICKEL 200	55 AMPS
A0117-6-QF	TUBE ( .032 WALL )	NICKEL 200	N/A
A0117-7-QF	ROD	MOLYBDENDUM	93 AMPS

## NOTE:

- VOLTAGE: 12,000 VOLTS DC
- CURRENT: SEE TABLE
- TEMPERATURE RATING: -100 TO 450°C

Power Feedthrough, 12 KV, 1 Pin, 0.250" Conductor, 1.18" QF/KF, UHV Rated, Bakeable to 450°C

UNLESS OTHERWISE SPECIFIED:		QUOTATION #	
DIMENSIONS ARE IN INCHES		N/A	
TOLERANCES:		NAME	DATE
ANGULAR: MACH ± 1/2°		WJ	9/11/2015
TWO PLACE DECIMAL ± .030		CHECKED	9/11/2015
THREE PLACE DECIMAL ± .015		ENG APPR.	WJ 9/11/2015
MATERIAL		THIRD ANGLE:	
FINISH		APPLICATION	
PLATING		NEXT ASSY USED ON	
SURFACE FINISH: 63 OR BETTER		TITLE:	
UNLESS OTHERWISE SPECIFIED:		POWER FEEDTHROUGH, 12 KV, 1 PIN, 1.18" QF/KF	
ALL DIAMETERS CONCENTRIC WITHIN .005. REMOVE ALL BURRS AND SHARP EDGES		DWG. NO. A0117	
		REV	
		DOWNLOADED FROM MPFPI.COM	
		Tuesday, August 13, 2019 8:01:58 AM	