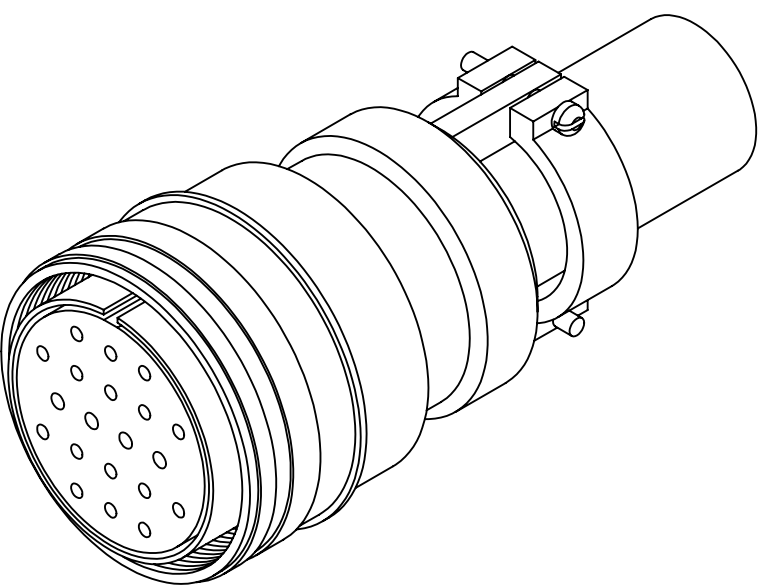
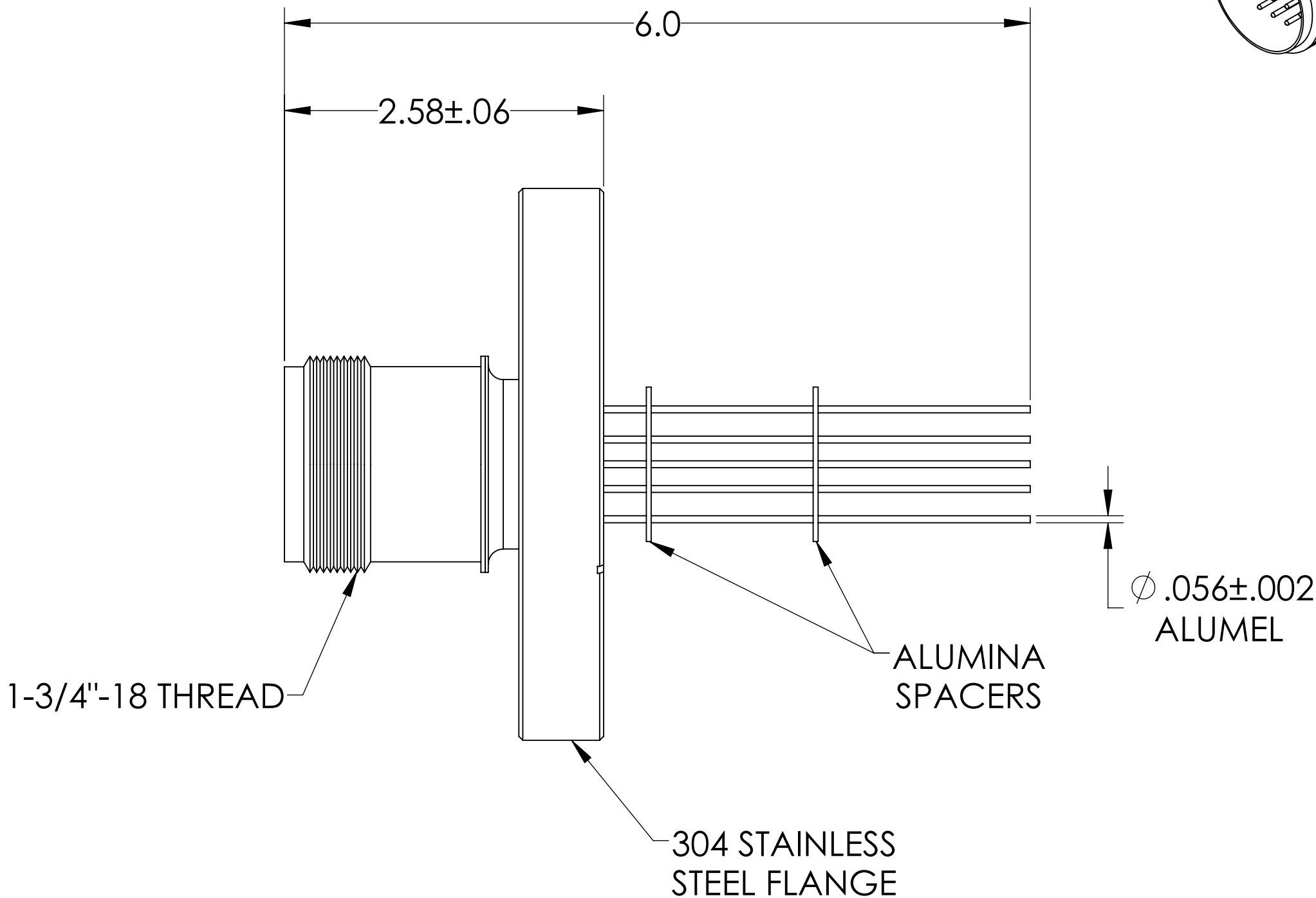
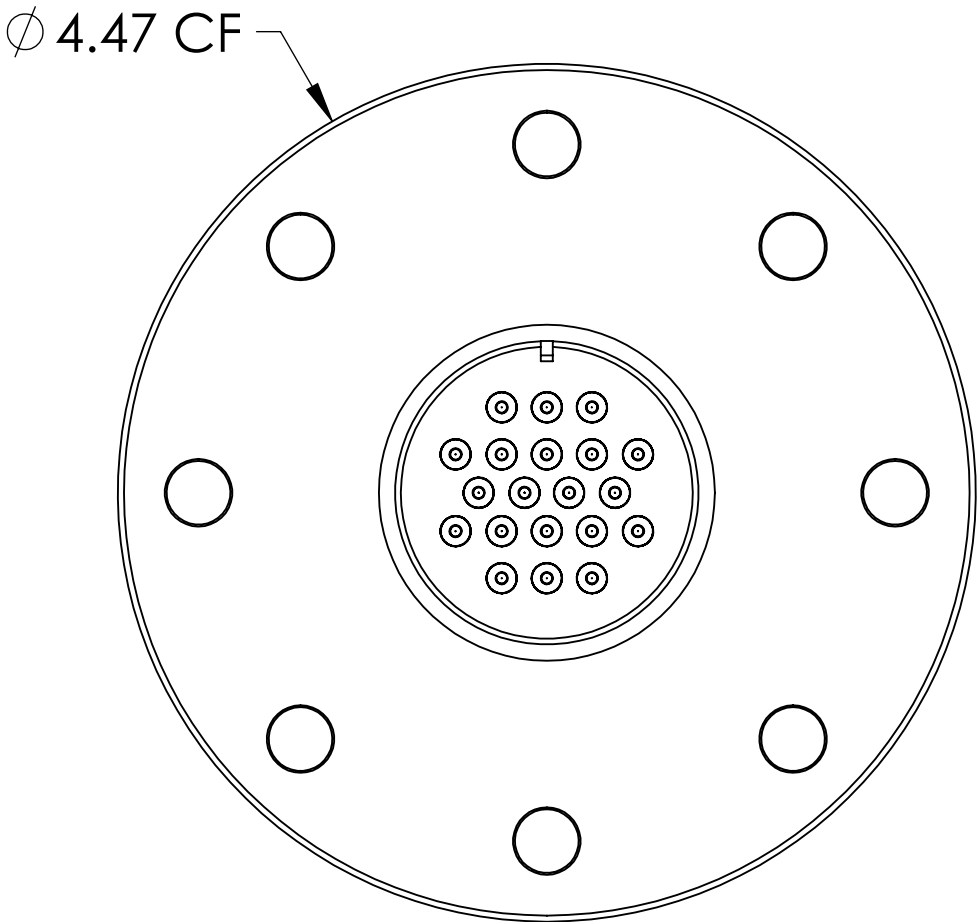
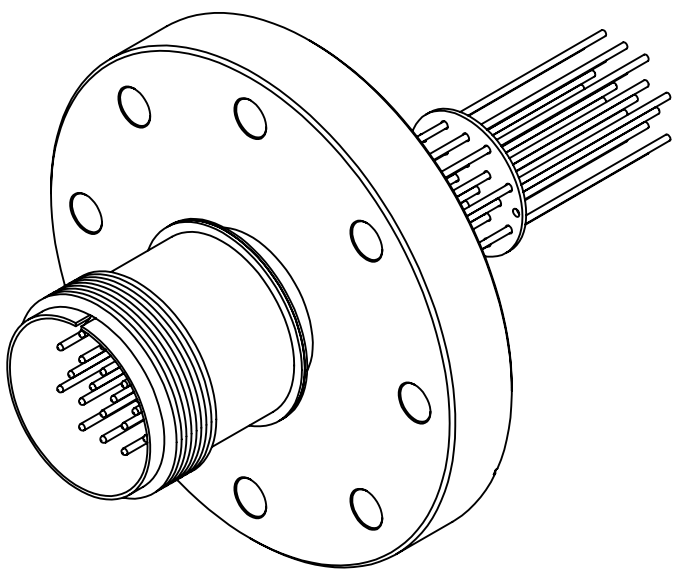


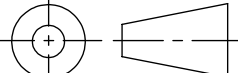

MPF PRODUCTS INC.



SPECIFICATIONS:

- 1. VOLTAGE: 700 VOLTS DC
- 2. CURRENT: 10 AMPS PER PIN, 75 AMPS FULL LOAD
- 3. TEMPERATURE RATING: -100 TO 450°C WITHOUT CONNECTOR
- 4. LEAK RATE < 1X10-9 ATM CC/SEC HE

MS Series, Multipin Feedthrough, 20 Pins, 700 Volts, 10 Amps per Pin, 0.056" Dia Conductors w/ Air-side Connector, 4.47" Conflat Flange

UNLESS OTHERWISE SPECIFIED:		QUOTATION #		N/A	
DIMENSIONS ARE IN INCHES TOLERANCES:  ANGULAR: MACH ± 1/2° TWO PLACE DECIMAL    ± .030 THREE PLACE DECIMAL   ± .015			NAME	DATE	MPF PRODUCTS INC.
		DRAWN	WJ	9/11/2015	
		CHECKED		9/11/2015	
		ENG APPR.	WJ	9/11/2015	
MATERIAL		THIRD ANGLE:			TITLE:  MULTIPIN, 20 PINS, 700V, 10A, 450CF
					
		APPLICATION			
		NEXT ASSY                  USED ON			
FINISH		SURFACE FINISH:  63 OR BETTER			DOWNLOADED FROM MPFPI.COM
PLATING		UNLESS OTHERWISE SPECIFIED:  ALL DIAMETERS CONCENTRIC WITHIN .005. REMOVE ALL BURRS AND SHARP EDGES			DWG. NO.                  REV
					A0208-4-CF
					Thursday, January 24, 2019 3:10:35 PM