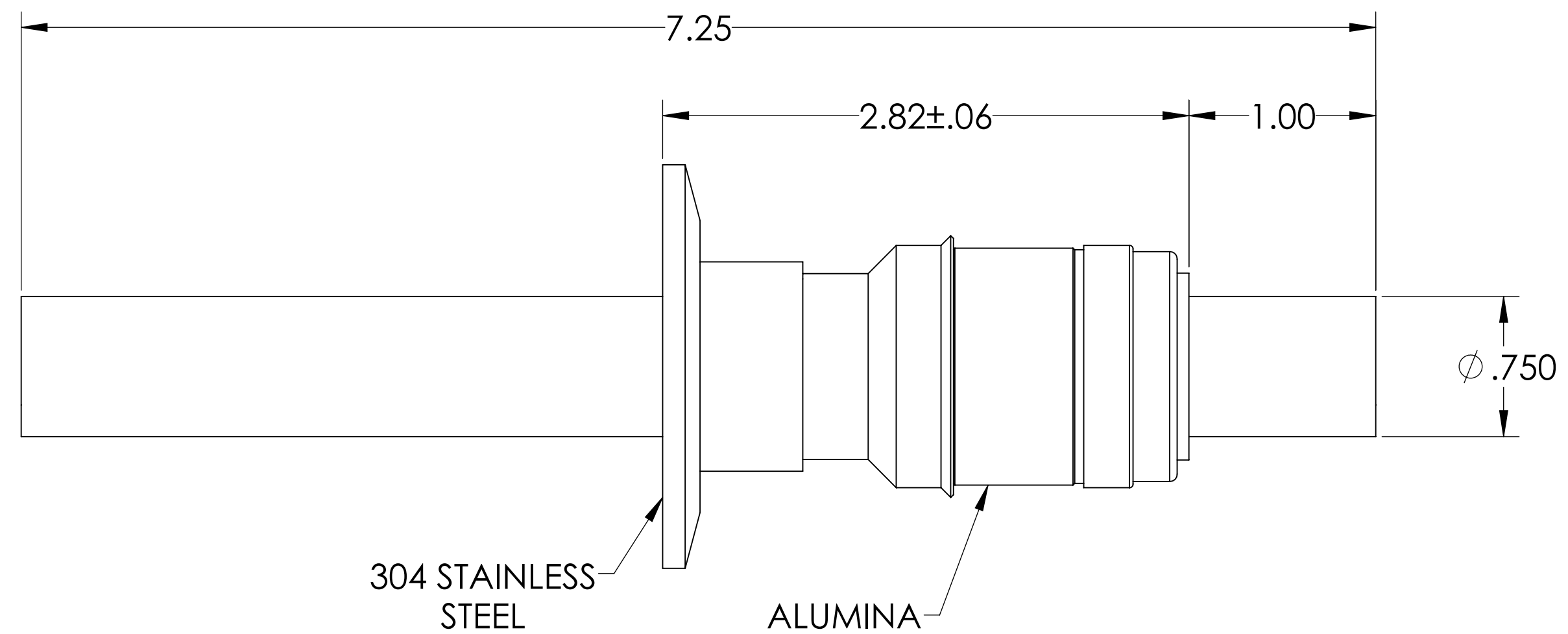
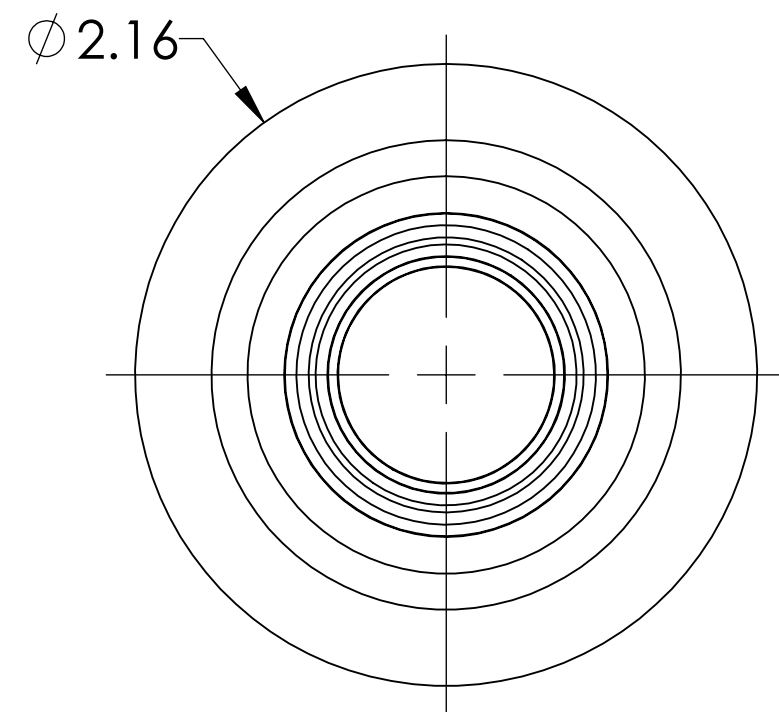
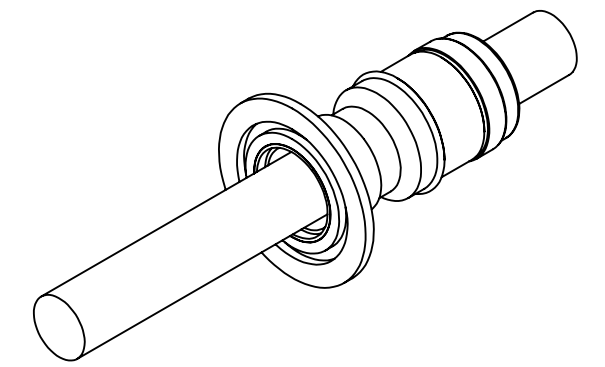


MPF PRODUCTS INC.



PART #	CONDUCTOR TYPE	CONDUCTOR MATERIAL	CURRENT RATING
A0219-1-QF	TUBE (.032 WALL)	OFHC COPPER	N/A
A0219-2-QF	ROD	OFHC COPPER	800 AMPS
A0219-3-QF	ROD	304 STN STL	52 AMPS
A0219-4-QF	TUBE (.032 WALL)	304 STN STL	N/A
A0219-5-QF	ROD	NICKEL 200	250 AMPS

NOTE:

- VOLTAGE: 8000 VOLTS DC
- CURRENT: SEE TABLE
- TEMPERATURE RATING: -100 TO 450°C

Power Feedthrough, 8000 Volts, 1 Pin, 0.750" Conductor, 2.16" QF/KF, UHV Rated, Bakeable to 450°C

UNLESS OTHERWISE SPECIFIED:		QUOTATION #	
DIMENSIONS ARE IN INCHES		N/A	
TOLERANCES:		NAME	DATE
ANGULAR: MACH $\pm 1/2^\circ$		WJ	9/11/2015
TWO PLACE DECIMAL $\pm .030$		CHECKED	9/11/2015
THREE PLACE DECIMAL $\pm .015$		ENG APPR.	WJ 9/11/2015
MATERIAL		THIRD ANGLE:	
FINISH		APPLICATION	
PLATING		NEXT ASSY	USED ON
		SURFACE FINISH:	$\sqrt{63}$ OR BETTER
		UNLESS OTHERWISE SPECIFIED:	
		ALL DIAMETERS CONCENTRIC WITHIN .005. REMOVE ALL BURRS AND SHARP EDGES	
		TITLE:	
		POWER FEEDTHROUGH, 8000 VOLTS, 1 PIN, 2.16" QF/KF	
		DOWNLOADED FROM MPFPI.COM	
		DWG. NO.	REV
		A0219	
		Thursday, November 29, 2018 8:43:31 AM	