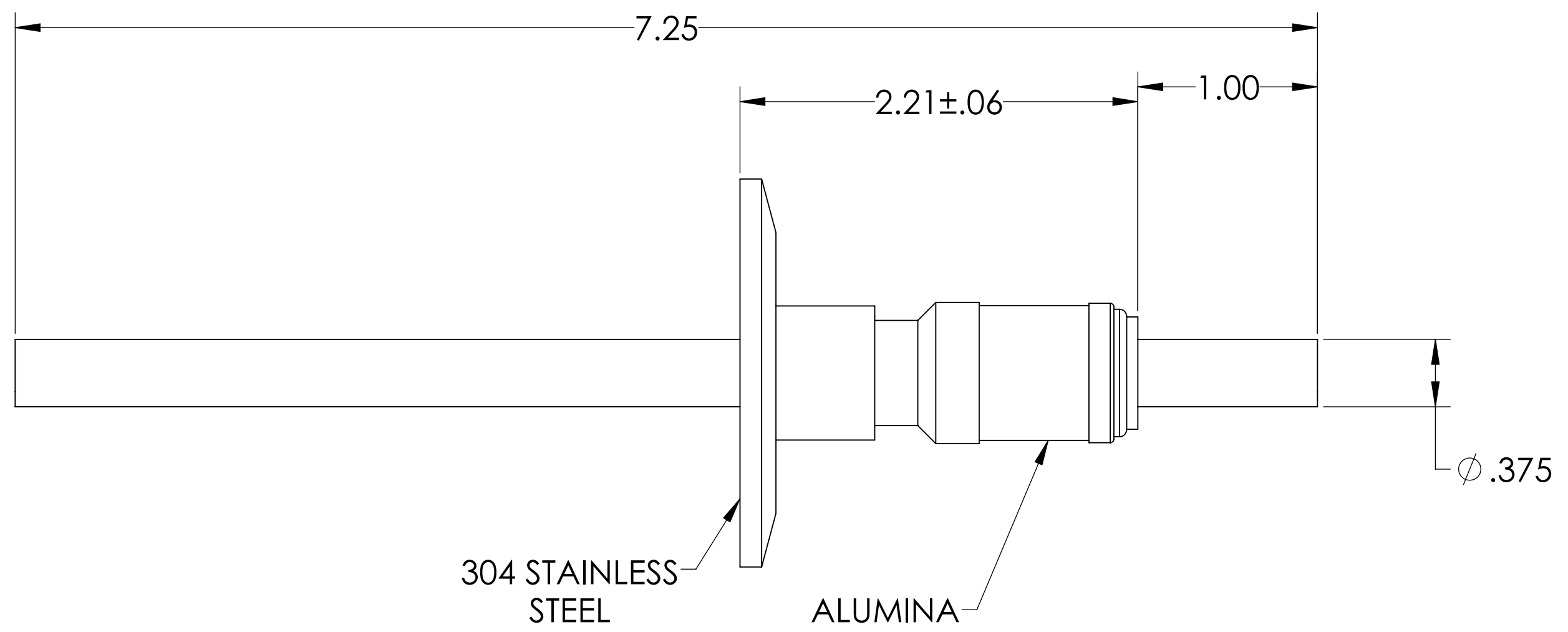
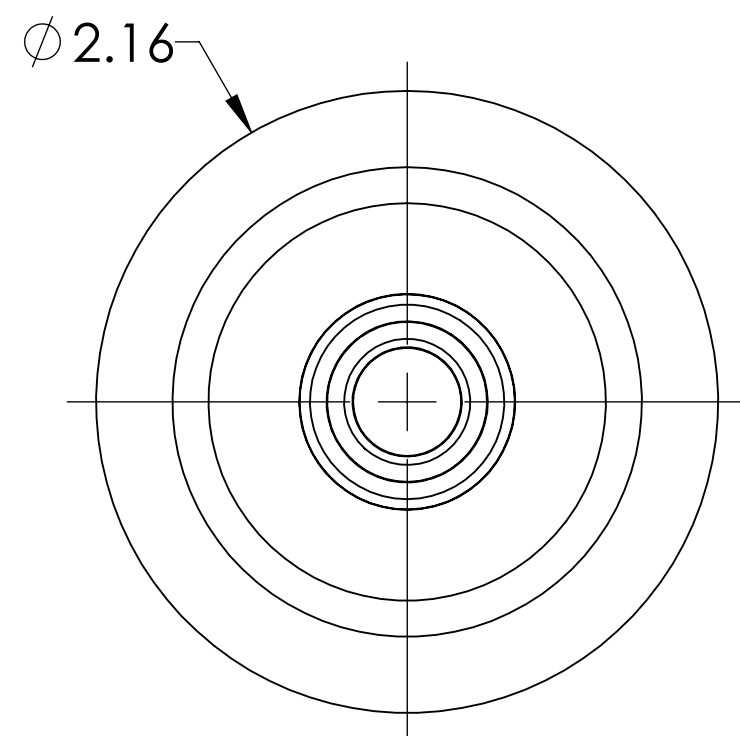
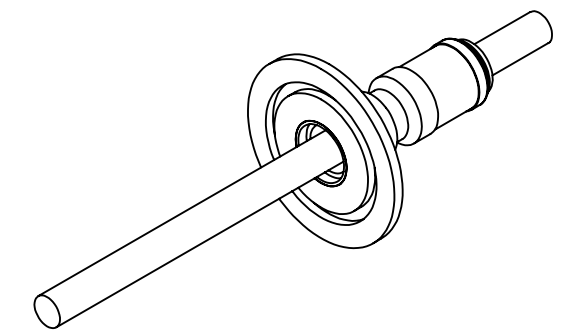


MPF PRODUCTS INC.



PART #	CONDUCTOR TYPE	CONDUCTOR MATERIAL	CURRENT RATING
A0220-1-QF	TUBE (.032 WALL)	OFHC COPPER	N/A
A0220-2-QF	ROD	OFHC COPPER	300 AMPS
A0220-3-QF	TUBE (.032 WALL)	NICKEL 200	N/A
A0220-4-QF	ROD	NICKEL 200	100 AMPS
A0220-5-QF	TUBE (.032 WALL)	304 STN STL	N/A
A0220-6-QF	ROD	304 STN STL	20 AMPS
A0220-7-QF	ROD	MOLYBDENUM	135 AMPS

- NOTE:
- VOLTAGE: 8000 VOLTS DC
 - CURRENT: SEE TABLE
 - TEMPERATURE RATING: -100 TO 450°C

Power Feedthrough, 8000 Volts, 1 Pin, 0.375" Conductor, 2.16" QF/KF, UHV Rated, Bakeable to 450°C

UNLESS OTHERWISE SPECIFIED:		QUOTATION #		N/A	
DIMENSIONS ARE IN INCHES TOLERANCES:		NAME	DATE	MPF PRODUCTS INC.	
ANGULAR: MACH ± 1/2°		DRAWN	9/11/2015		
TWO PLACE DECIMAL ± .030		CHECKED	9/11/2015		
THREE PLACE DECIMAL ± .015		ENG APPR.	9/11/2015		
MATERIAL		THIRD ANGLE:		POWER FEEDTHROUGH, 8000 VOLTS, 1 PIN, 2.16" QF/KF	
FINISH		APPLICATION			
PLATING		NEXT ASSY USED ON			
		SURFACE FINISH: 63 OR BETTER			
		UNLESS OTHERWISE SPECIFIED:		DOWNLOADED FROM MPFPI.COM	
		ALL DIAMETERS CONCENTRIC WITHIN .005. REMOVE ALL BURRS AND SHARP EDGES		DWG. NO. A0220	
				REV	
				Thursday, November 29, 2018 8:45:10 AM	