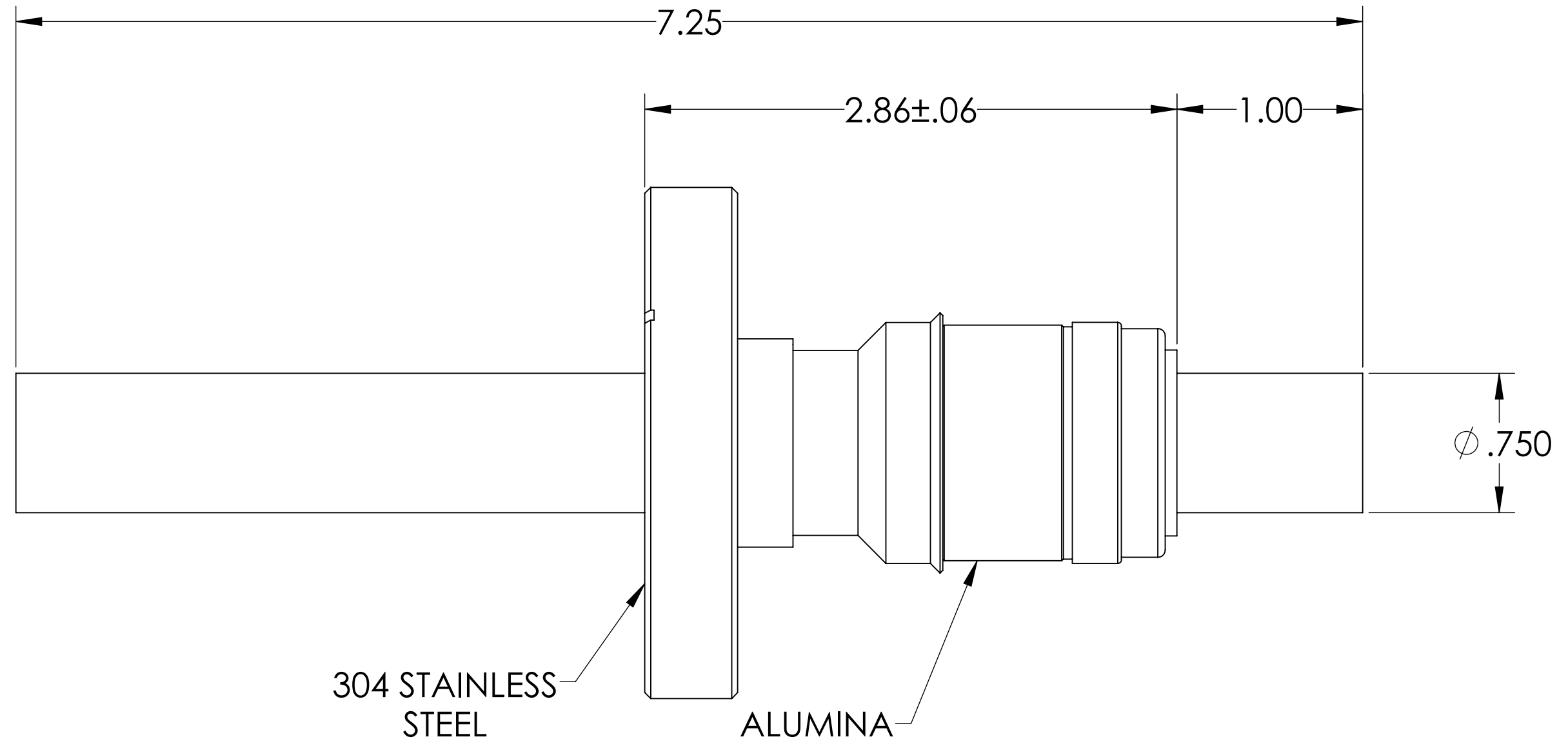
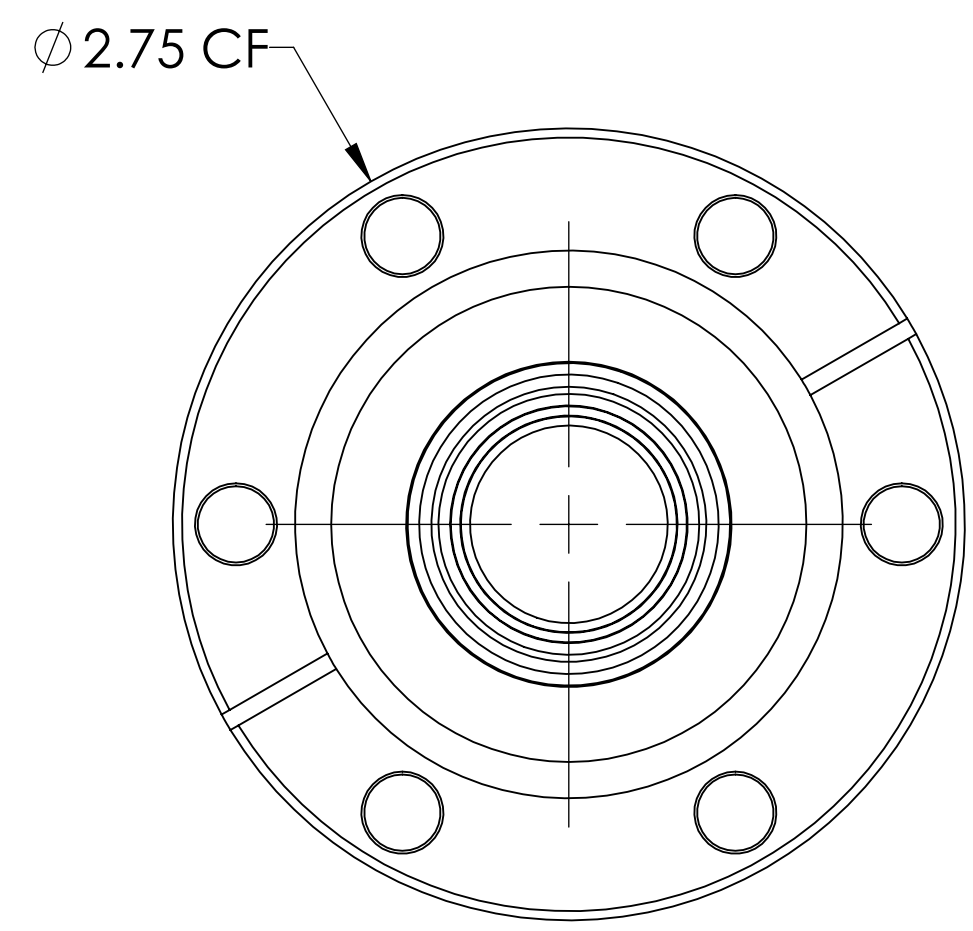
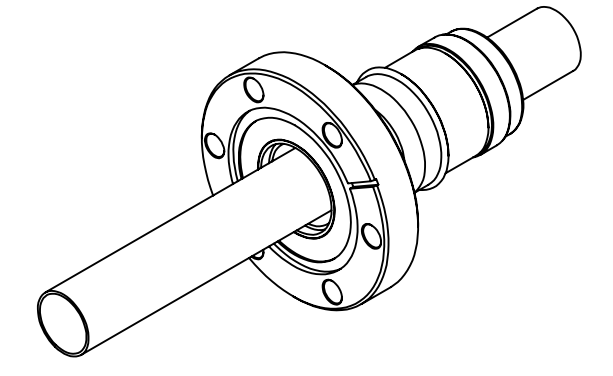


MPF PRODUCTS INC.



PART #	CONDUCTOR TYPE	CONDUCTOR MATERIAL	CURRENT RATING
A0236-1-CF	TUBE (.032 WALL)	OFHC COPPER	N/A
A0236-2-CF	ROD	OFHC COPPER	800 AMPS
A0236-3-CF	ROD	304 STN STL	50 AMPS
A0236-4-CF	TUBE (.032 WALL)	304 STN STL	N/A
A0236-5-CF	ROD	NICKEL 200	250 AMPS

- NOTE:
1. VOLTAGE: 8000 VOLTS DC
 2. CURRENT: SEE TABLE
 3. TEMPERATURE RATING: -100 TO 450°C

Power Feedthrough, 8000 Volts, 1 Pin, 0.750" Conductor, 2.75" Conflat Flange, UHV Rated, Bakeable to 450°C

UNLESS OTHERWISE SPECIFIED:		QUOTATION #		N/A	
DIMENSIONS ARE IN INCHES TOLERANCES:		NAME	DATE	MPF PRODUCTS INC.	
ANGULAR: MACH ± 1/2°		DRAWN	9/11/2015		
TWO PLACE DECIMAL ± .030		CHECKED	9/11/2015		
THREE PLACE DECIMAL ± .015		ENG APPR.	9/11/2015		
MATERIAL		THIRD ANGLE:		POWER FEEDTHROUGH, 8000 VOLTS, 1 PIN, 2.75" CONFLAT FLANGE	
FINISH		APPLICATION			
PLATING		NEXT ASSY USED ON			
SURFACE FINISH: 63 OR BETTER		SURFACE FINISH: 63 OR BETTER		DOWNLOADED FROM MPFPI.COM	
UNLESS OTHERWISE SPECIFIED:		UNLESS OTHERWISE SPECIFIED:		DWG. NO. A0236	
ALL DIAMETERS CONCENTRIC WITHIN .005. REMOVE ALL BURRS AND SHARP EDGES		ALL DIAMETERS CONCENTRIC WITHIN .005. REMOVE ALL BURRS AND SHARP EDGES		REV	
				Thursday, November 29, 2018 3:07:08 PM	