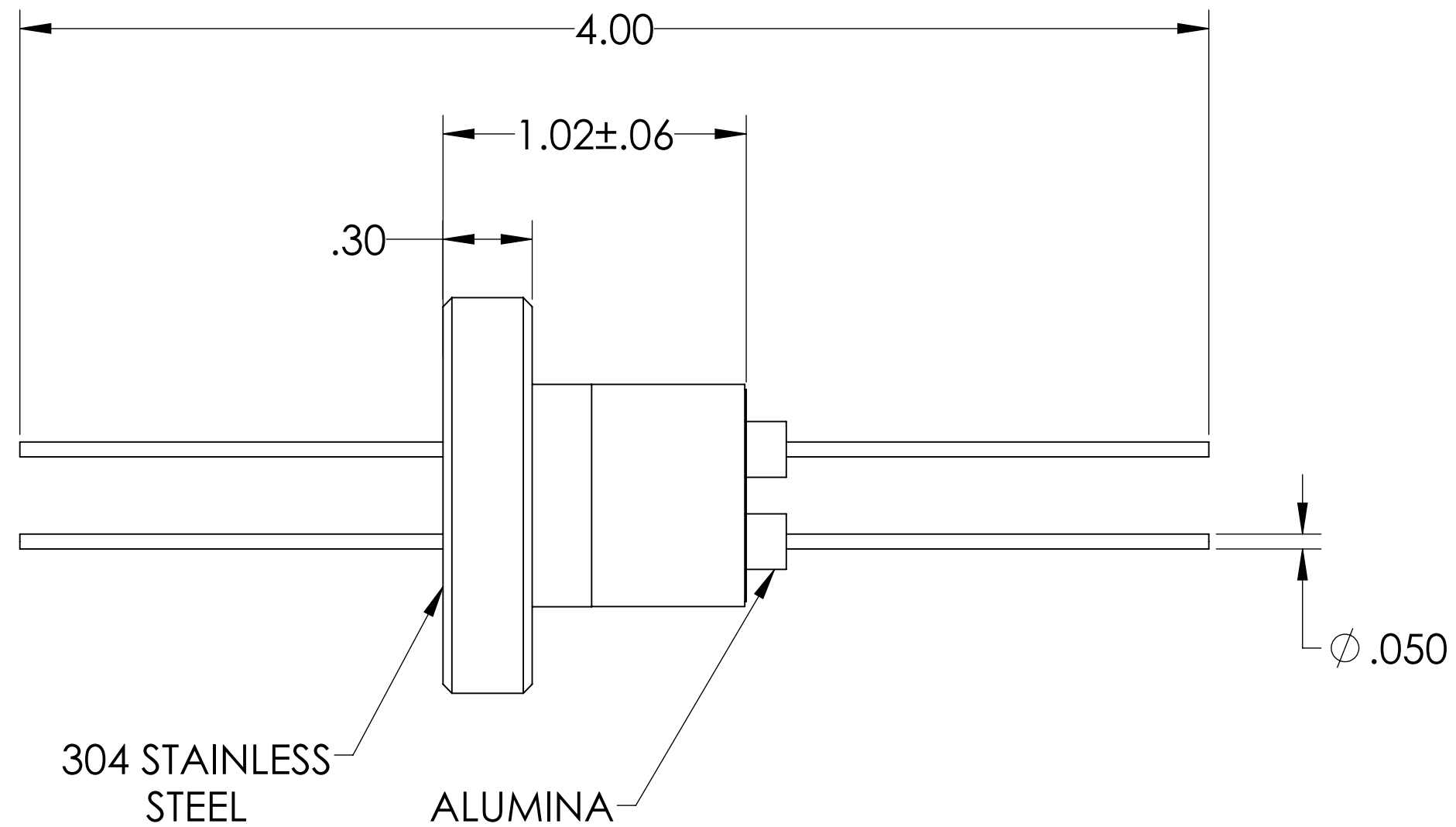
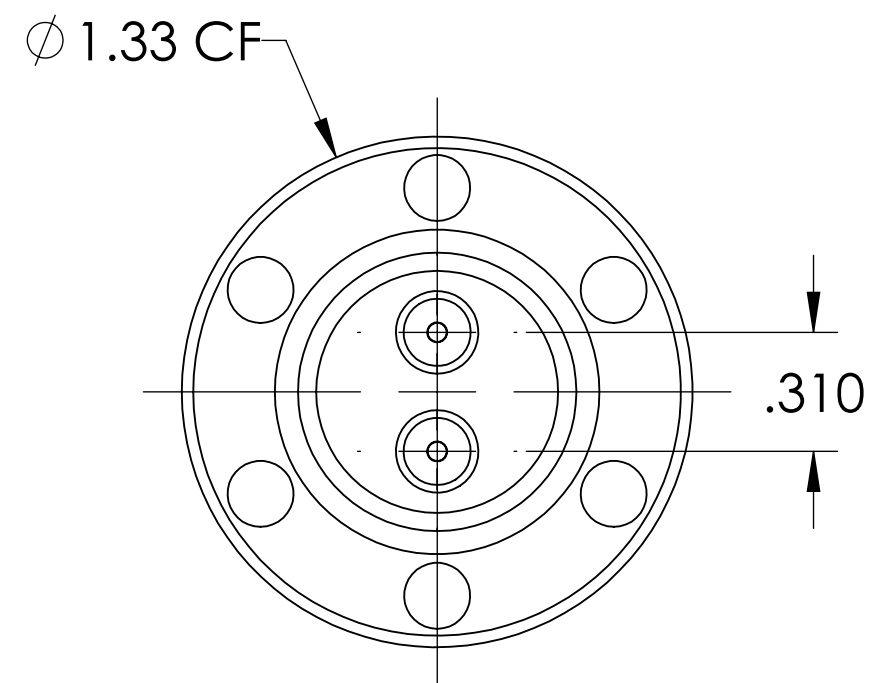
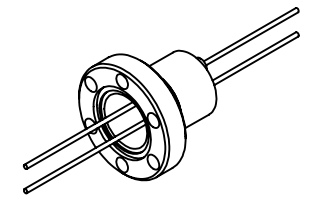


# MPF PRODUCTS INC.



PART #	CONDUCTOR MATERIAL	CURRENT RATING
A0261-1-CF	NICKEL	8 AMPS
A0261-2-CF	STN STL	1 AMP
A0261-3-CF	OFHC COPPER	25 AMPS
A0261-4-CF	MOLYBDENUM	13 AMPS

**NOTE:**

1. VOLTAGE: 1000 VOLTS DC
2. CURRENT: SEE TABLE
3. TEMPERATURE RATING: -100 TO 450°C

Power Feedthrough, 1000 Volts, 2 Pins, 0.050" Conductors, 1.33" Conflat Flange, UHV Rated, Bakeable to 450°C

UNLESS OTHERWISE SPECIFIED:	QUOTATION #	N/A	
DIMENSIONS ARE IN INCHES TOLERANCES:	DRAWN	NAME	DATE
ANGULAR: MACH ± 1/2°	WJ	WJ	9/11/2015
TWO PLACE DECIMAL ± .030	CHECKED		9/11/2015
THREE PLACE DECIMAL ± .015	ENG APPR.	WJ	9/11/2015
MATERIAL	THIRD ANGLE:		
FINISH	APPLICATION		
PLATING	NEXT ASSY USED ON		
	SURFACE FINISH:	63/	OR BETTER
	UNLESS OTHERWISE SPECIFIED:	ALL DIAMETERS CONCENTRIC WITHIN .005. REMOVE ALL BURRS AND SHARP EDGES	
	TITLE:	POWER FEEDTHROUGH, 1000 VOLTS, 2 PINS, 1.33" CONFLAT FLANGE	
	DOWNLOADED FROM MPFPI.COM		
	DWG. NO.	A0261	REV
	Friday, January 18, 2019 11:19:01 AM		