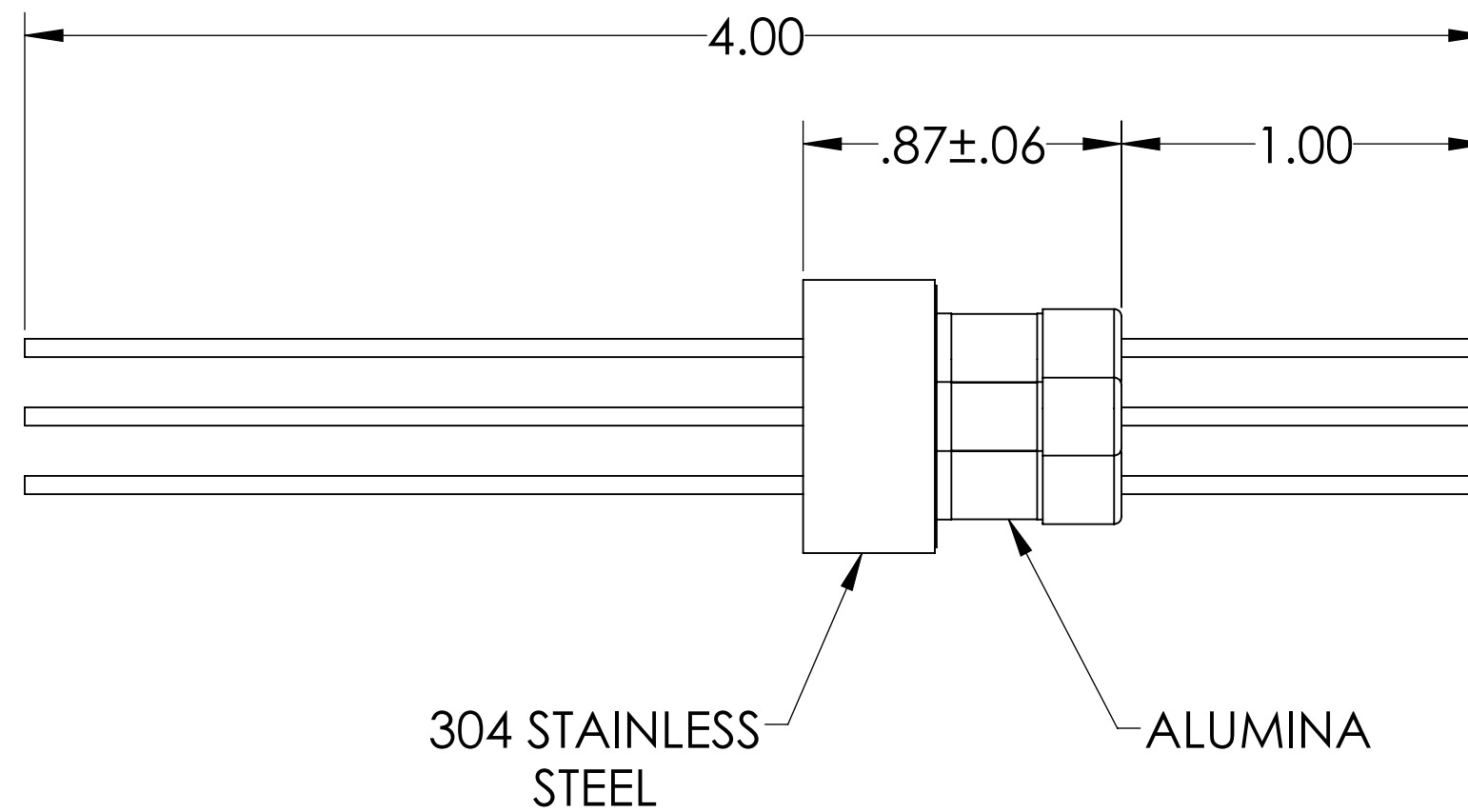
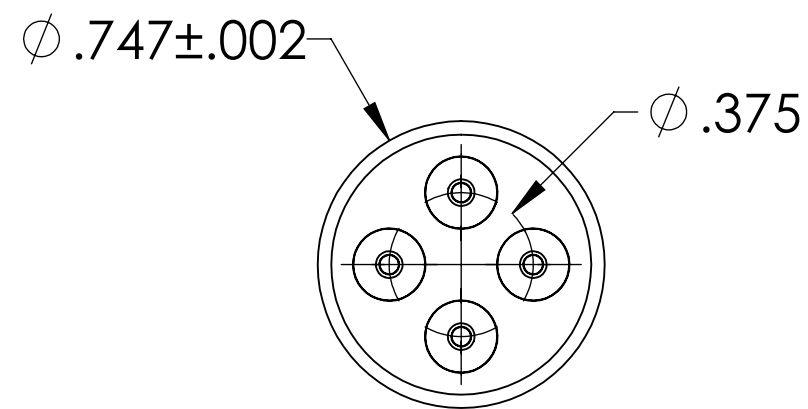
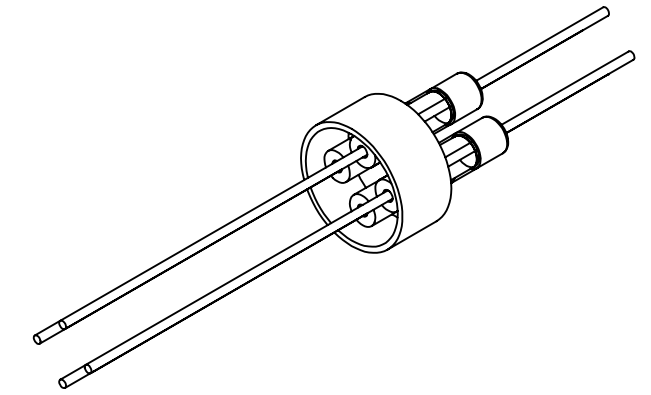


# MPF PRODUCTS INC.



PART #	CONDUCTOR MATERIAL	CURRENT RATING
A0268-1-W	NICKEL 200	8 AMPS
A0268-2-W	304 STAINLESS STEEL	1 AMP
A0268-3-W	OFHC COPPER	25 AMPS
A0268-4-W	MOLYBDENUM	13 AMPS

**NOTE:**

1. VOLTAGE: 500 VOLTS DC
2. CURRENT: SEE TABLE
3. TEMPERATURE RATING: -100 TO 450°C

Power Feedthrough, 500 Volts, 4 Pins, 0.050" Conductor, 0.747" Dia Stainless Steel Weld Adapter, UHV Rated, Bakeable to 450°C

UNLESS OTHERWISE SPECIFIED:	QUOTATION #	N/A
DIMENSIONS ARE IN INCHES TOLERANCES:	NAME	DATE
ANGULAR: MACH ± 1/2°	DRAWN	9/11/2015
TWO PLACE DECIMAL ± .030	CHECKED	9/11/2015
THREE PLACE DECIMAL ± .015	ENG APPR.	WJ 9/11/2015
MATERIAL	THIRD ANGLE:	
FINISH	APPLICATION	
PLATING	NEXT ASSY USED ON	
	SURFACE FINISH:	63/ OR BETTER
	UNLESS OTHERWISE SPECIFIED:	
	ALL DIAMETERS CONCENTRIC WITHIN .005. REMOVE ALL BURRS AND SHARP EDGES	
TITLE:		MPF PRODUCTS INC.
POWER FEEDTHROUGH, 500 VOLTS, 4 PINS, 0.747" WELD ADAPTER		DOWNLOADED FROM MPFPI.COM
DWG. NO.		A0268
REV		Friday, November 30, 2018 10:51:10 AM