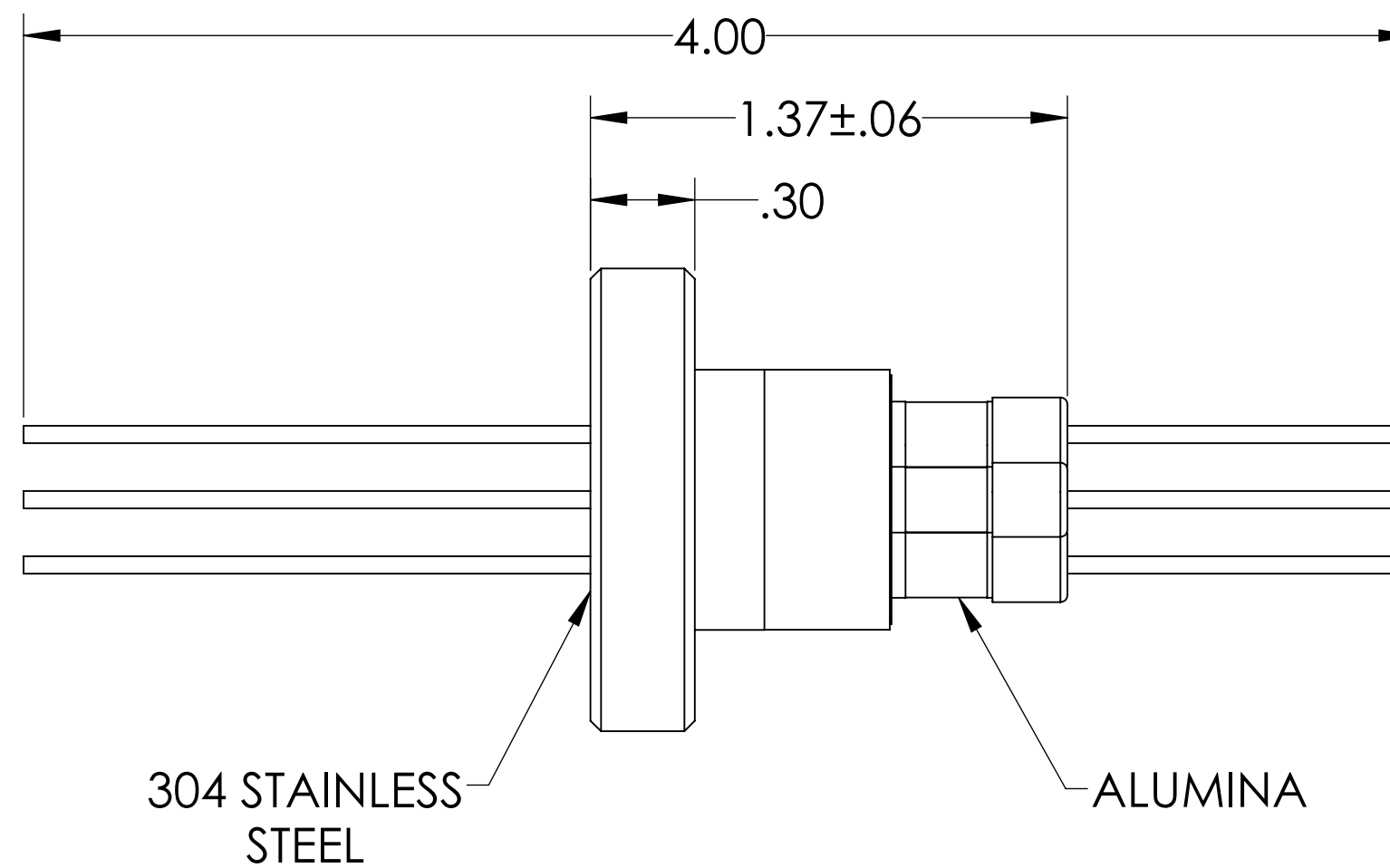
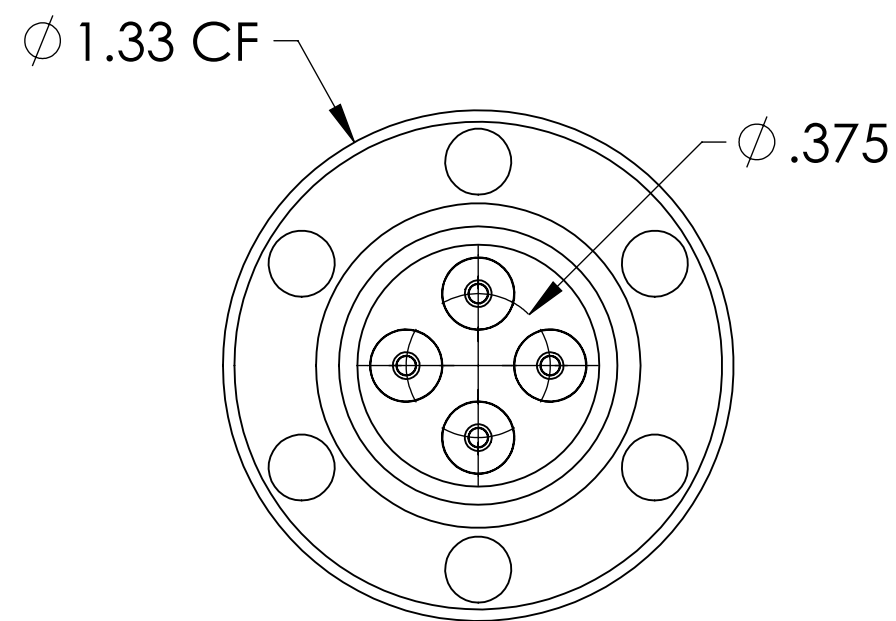
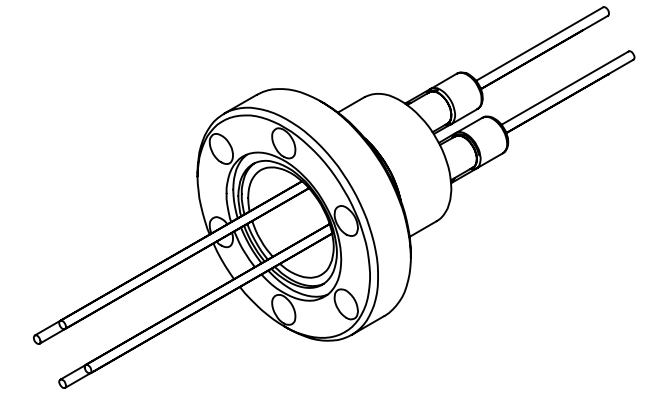


MPF PRODUCTS INC.



PART #	CONDUCTOR MATERIAL	CURRENT RATING
A0270-1-CF	NICKEL 200	8 AMPS
A0270-2-CF	304 STAINLESS STEEL	1 AMP
A0270-3-CF	OFHC COPPER	25 AMPS
A0270-4-CF	MOLYBDENUM	13 AMPS

NOTE:

1. VOLTAGE: 5000 VOLTS DC
2. CURRENT: SEE TABLE
3. TEMPERATURE RATING: -100 TO 450°C

Power Feedthrough, 5000 Volts, 4 Pins, 0.050" Conductor, 1.33" Conflat Flange, UHV Rated, Bakeable to 450°C

UNLESS OTHERWISE SPECIFIED:	QUOTATION #		N/A
DIMENSIONS ARE IN INCHES TOLERANCES:	NAME	DATE	MPF PRODUCTS INC.
ANGULAR: MACH ± 1/2°	DRAWN	9/11/2015	
TWO PLACE DECIMAL ± .030	CHECKED	9/11/2015	
THREE PLACE DECIMAL ± .015	ENG APPR.	9/11/2015	
MATERIAL	THIRD ANGLE:		POWER FEEDTHROUGH, 5000 VOLTS, 4 PINS, 1.33" CONFLAT FLANGE
APPLICATION			
NEXT ASSY	USED ON		
FINISH	SURFACE FINISH: 63/ OR BETTER		DOWNLOADED FROM MPFPI.COM
PLATING	UNLESS OTHERWISE SPECIFIED:		DWG. NO. A0270 REV
	ALL DIAMETERS CONCENTRIC WITHIN .005. REMOVE ALL BURRS AND SHARP EDGES		Friday, January 18, 2019 11:17:35 AM