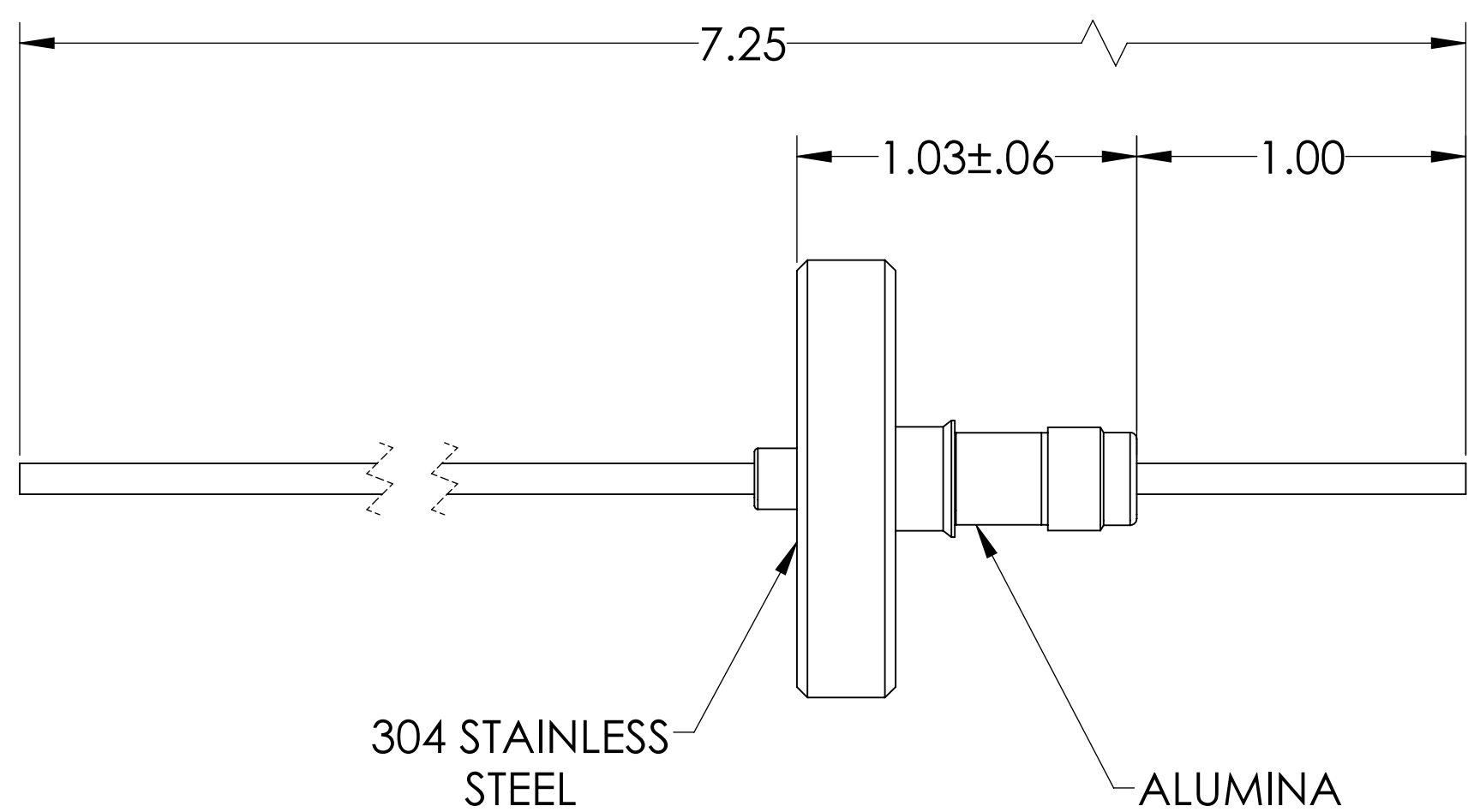
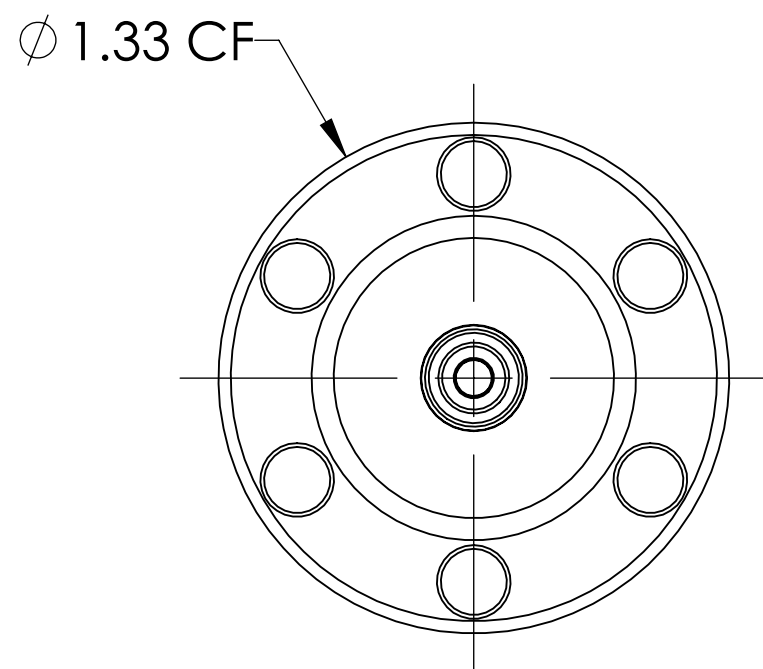
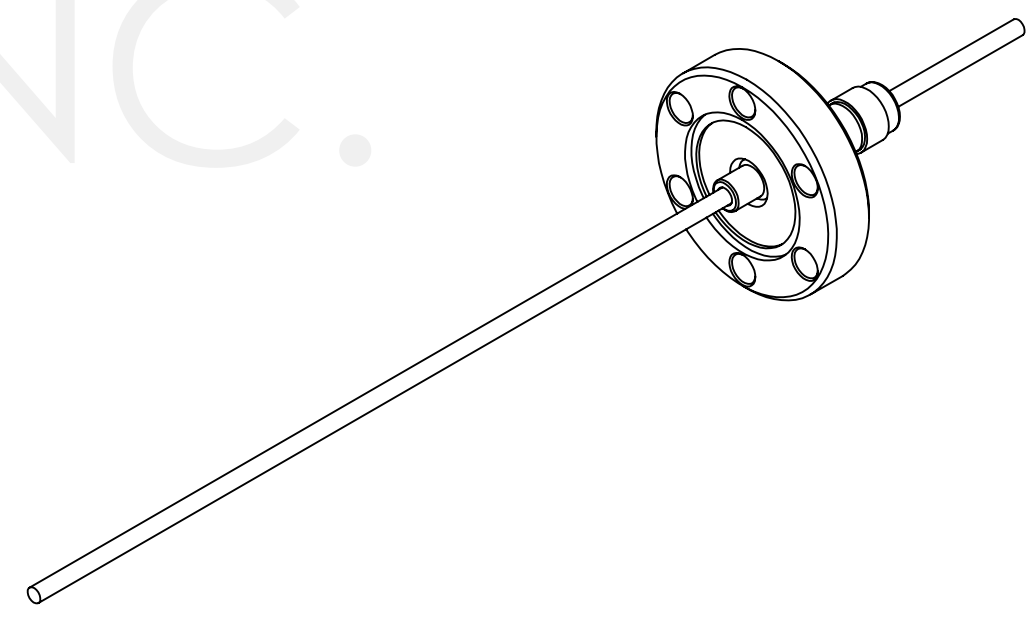


# MPF PRODUCTS INC.



PART #	CONDUCTOR MATERIAL	"A" DIM	CURRENT RATING
A0273-1-CF	OFHC COPPER	.094	50 AMPS
A0273-2-CF	NICKEL 200	.092	15 AMPS
A0273-5-CF	MOLYBDENUM	.094	28 AMPS

- NOTE:
1. VOLTAGE: 5000 VOLTS DC
  2. CURRENT: SEE TABLE
  3. TEMPERATURE RATING: -100 TO 450°C

Power Feedthrough, 5000 Volts, 1 Pin, 1.33" Conflat Flange, UHV Rated, Bakeable to 450°C

UNLESS OTHERWISE SPECIFIED:	QUOTATION #	N/A		
DIMENSIONS ARE IN INCHES	NAME	DATE	MPF PRODUCTS INC.	
TOLERANCES:	DRAWN	WJ		9/11/2015
ANGULAR: MACH ± 1/2"	CHECKED			9/11/2015
TWO PLACE DECIMAL ± .030	ENG APPR.	WJ		9/11/2015
THREE PLACE DECIMAL ± .015	THIRD ANGLE:			
MATERIAL	APPLICATION	NEXT ASSY	USED ON	
FINISH	SURFACE FINISH:	63 OR BETTER		
PLATING	UNLESS OTHERWISE SPECIFIED:	ALL DIAMETERS CONCENTRIC WITHIN .005. REMOVE ALL BURRS AND SHARP EDGES		
TITLE:		POWER FEEDTHROUGH, 5000 VOLTS, 1 PIN, 1.33" CONFLAT FLANGE		
DWG. NO.		A0273		
REV		Friday, November 30, 2018 4:00:06 PM		