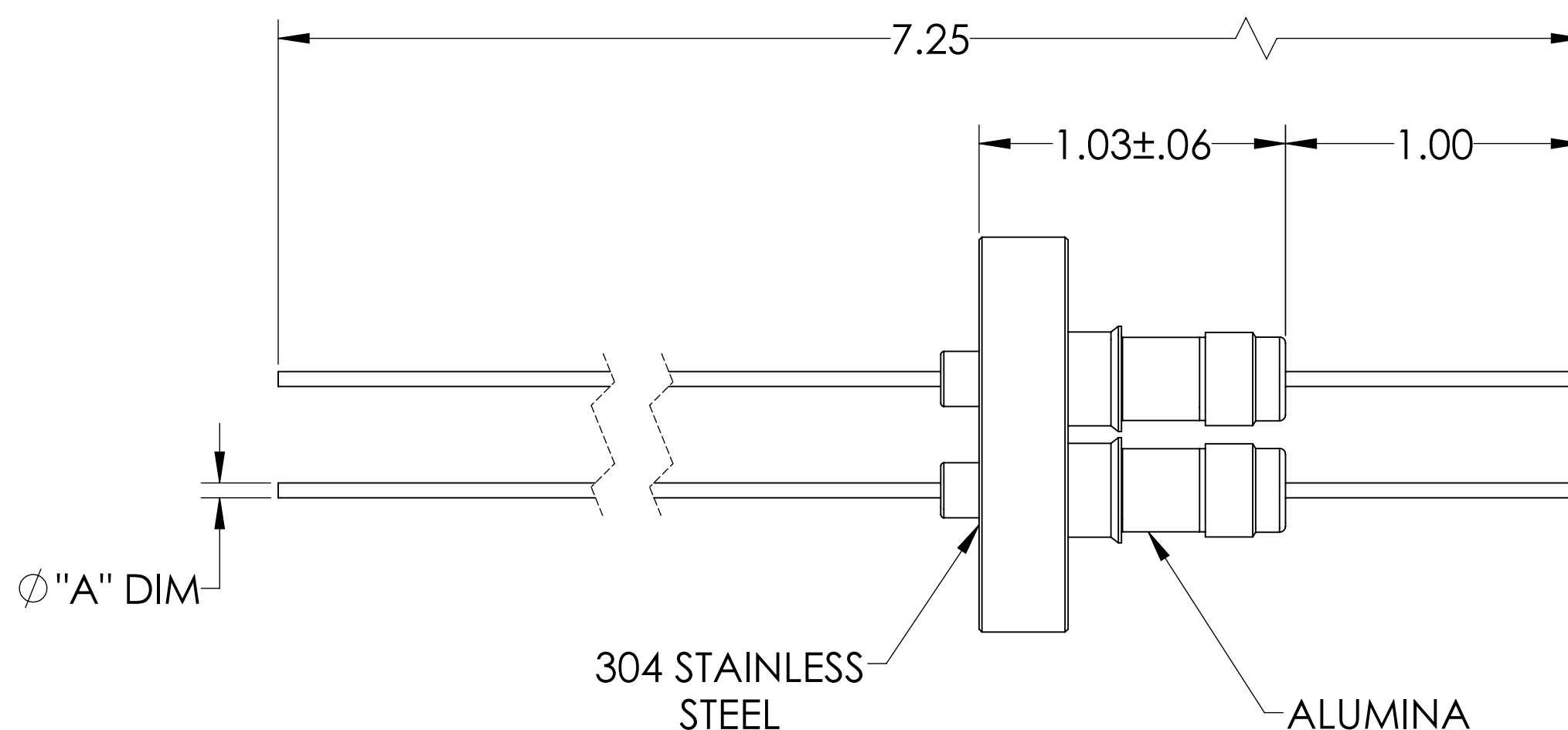
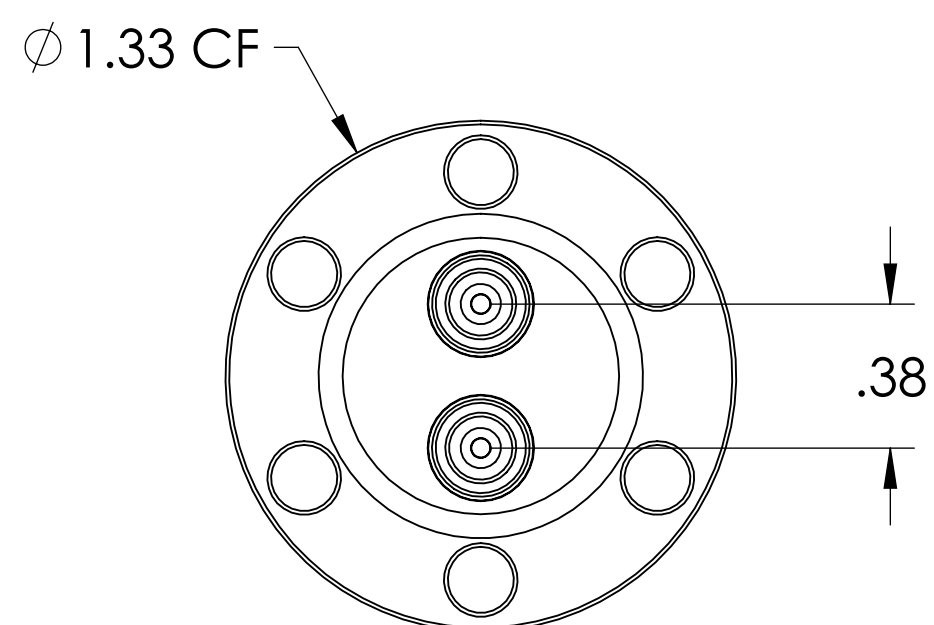
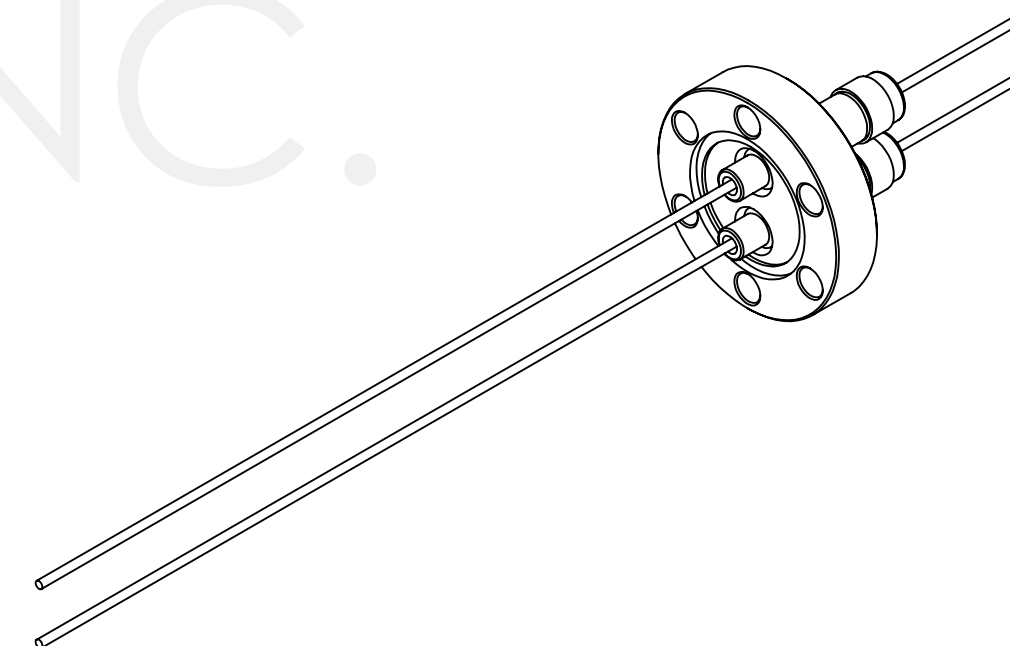


MPF PRODUCTS INC.



PART #	CONDUCTOR MATERIAL	"A" DIM	CURRENT RATING
A0275-1-CF	OFHC COPPER	.094	50 AMPS
A0275-2-CF	NICKEL 200	.092	15 AMPS
A0275-5-CF	MOLYBDENUM	.094	28 AMPS

- NOTE:
1. VOLTAGE: 5000 VOLTS DC
 2. CURRENT: SEE TABLE
 3. TEMPERATURE RATING: -100 TO 450°C

Power Feedthrough, 5000 Volts, 2 Pins, 1.33" Conflat Flange, UHV Rated, Bakeable to 450°C

UNLESS OTHERWISE SPECIFIED:		QUOTATION #		N/A		
DIMENSIONS ARE IN INCHES		NAME	DATE	MPF PRODUCTS INC.		
TOLERANCES:		DRAWN	WJ			9/11/2015
ANGULAR: MACH ± 1/2"		CHECKED				9/11/2015
TWO PLACE DECIMAL ± .030		ENG APPR.	WJ			9/11/2015
THREE PLACE DECIMAL ± .015		THIRD ANGLE:		POWER FEEDTHROUGH, 5000 VOLTS, 2 PINS, 1.33" CONFLAT FLANGE		
MATERIAL						
FINISH		APPLICATION				
PLATING		NEXT ASSY	USED ON	DOWNLOADED FROM MPFPI.COM		
SURFACE FINISH:		63/ OR BETTER		DWG. NO.	REV	
UNLESS OTHERWISE SPECIFIED:		ALL DIAMETERS CONCENTRIC WITHIN .005.		A0275		
REMOVE ALL BURRS AND SHARP EDGES		Friday, January 18, 2019 11:16:56 AM				