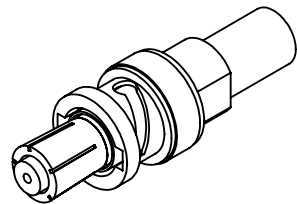
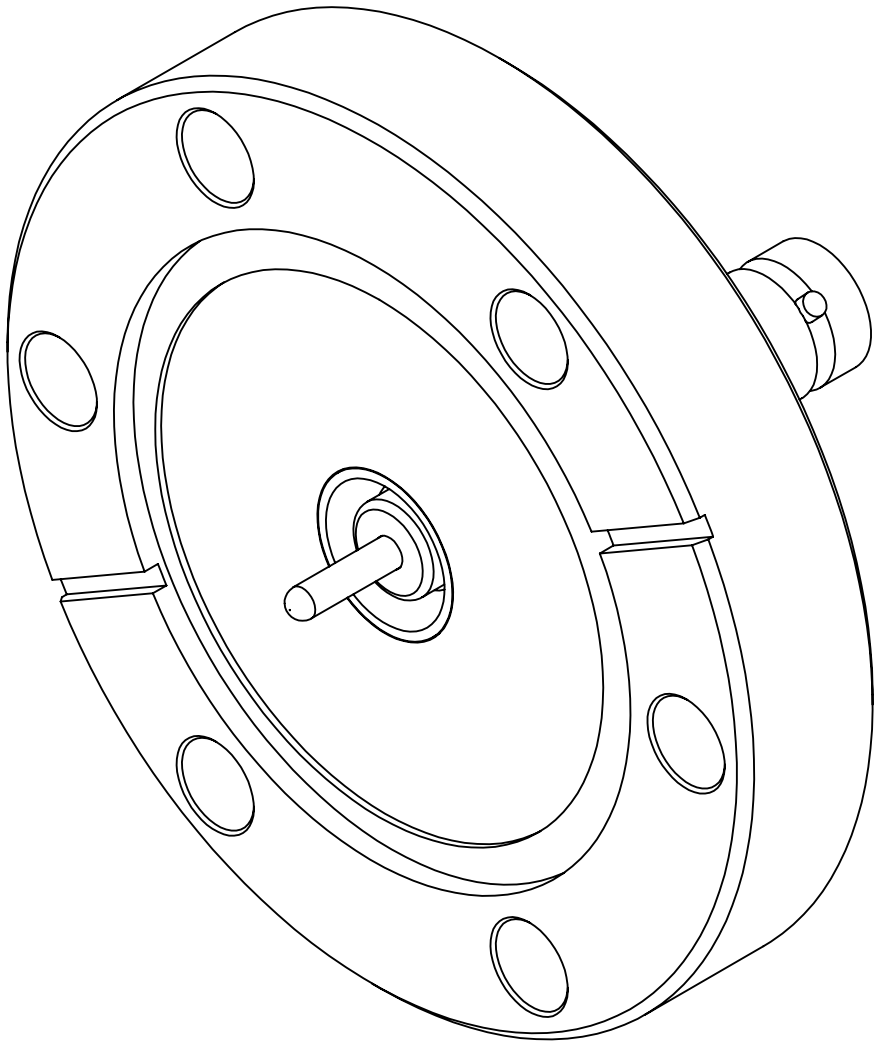
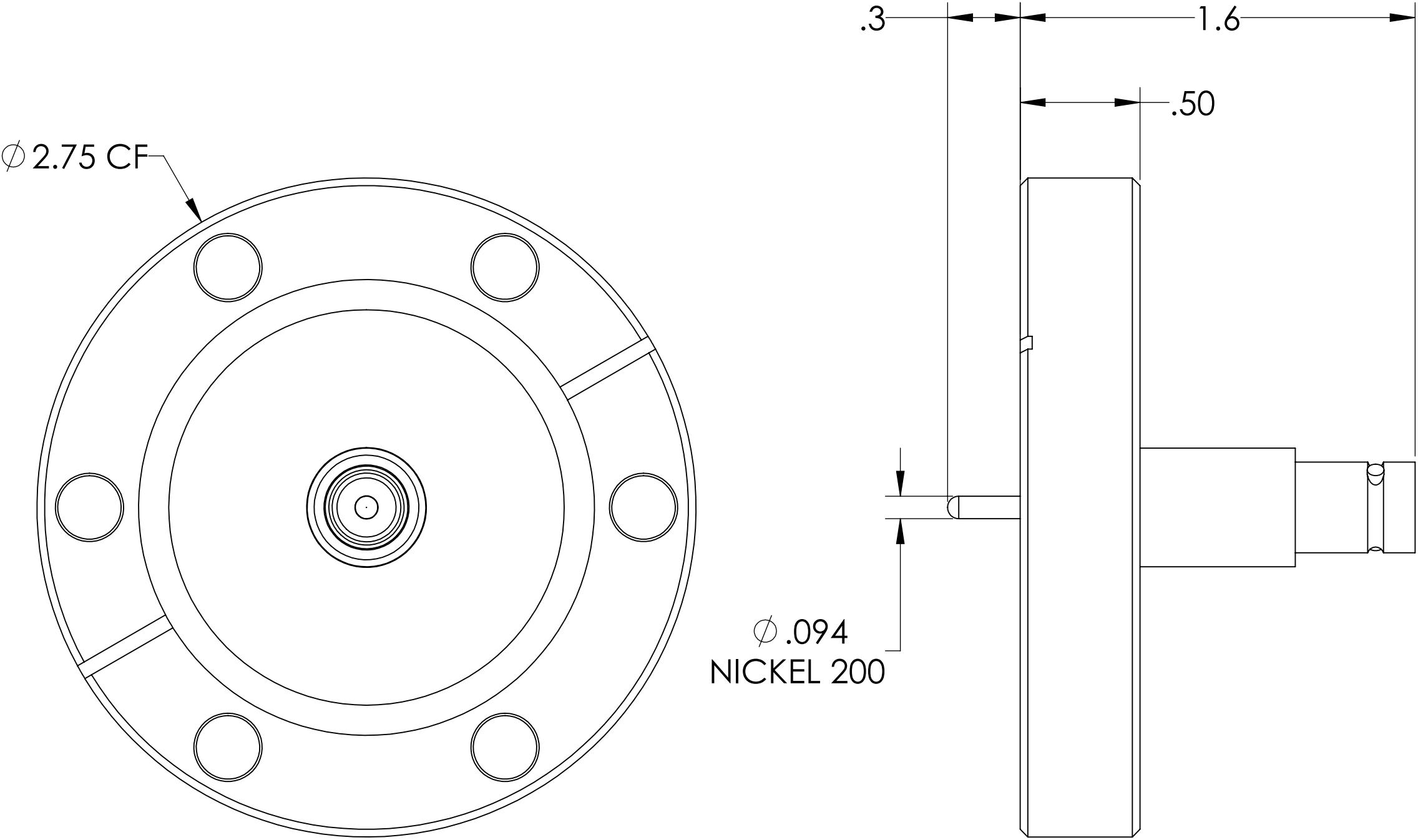


MPF PRODUCTS INC.



| PART # | AIRSIDE CONNECTOR INCLUDED |
|------------|----------------------------|
| A0331-1-CF | YES |
| A0331-2-CF | NO |

- NOTE:
- 1. SHIELD: GROUNDED
 - 2. VOLTAGE: 5000 VOLTS DC
 - 3. CURRENT: 5 AMPS
 - 4. TEMPERATURE RATING: -200 TO 450°C (FEEDTHROUGH), 65 TO 165°C (AIRSIDE CONNECTOR)
 - 5. IMPEDANCE: NON-CONSTANT

SHV-5 Coaxial Feedthrough, 1 Pin, Grounded Shield, 2.75" Conflat Flange, UHV Compatible

| | | | | | |
|---|--|---|----|--|-----------|
| UNLESS OTHERWISE SPECIFIED: | | QUOTATION # | | N/A | |
| DIMENSIONS ARE IN INCHES TOLERANCES: ANGULAR: MACH ± 1/2° TWO PLACE DECIMAL ± .030 THREE PLACE DECIMAL ± .015 | | DRAWN | WJ | DATE | 9/11/2015 |
| | | CHECKED | | | 9/11/2015 |
| | | ENG APPR. | WJ | | 9/11/2015 |
| | | THIRD ANGLE: | | | |
| MATERIAL | | | | | |
| | | APPLICATION | | | |
| | | NEXT ASSY | | USED ON | |
| FINISH | | SURFACE FINISH: | | 63/ OR BETTER | |
| PLATING | | UNLESS OTHERWISE SPECIFIED: | | | |
| | | ALL DIAMETERS CONCENTRIC WITHIN .005. REMOVE ALL BURRS AND SHARP EDGES | | | |
| | | TITLE: | | SHV-5 COAXIAL FEEDTHROUGH, 1 PIN, GROUNDED SHIELD, 2.75" CONFLAT FLANGE | |
| | | DWG. NO. | | A0331 | |
| | | REV | | | |
| | | DOWNLOADED FROM MPFPI.COM | | | |
| | | Thursday, October 4, 2018 9:01:51 AM | | | |