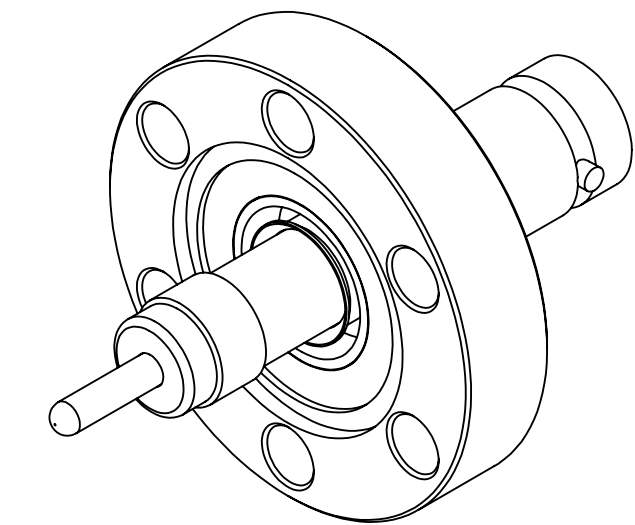
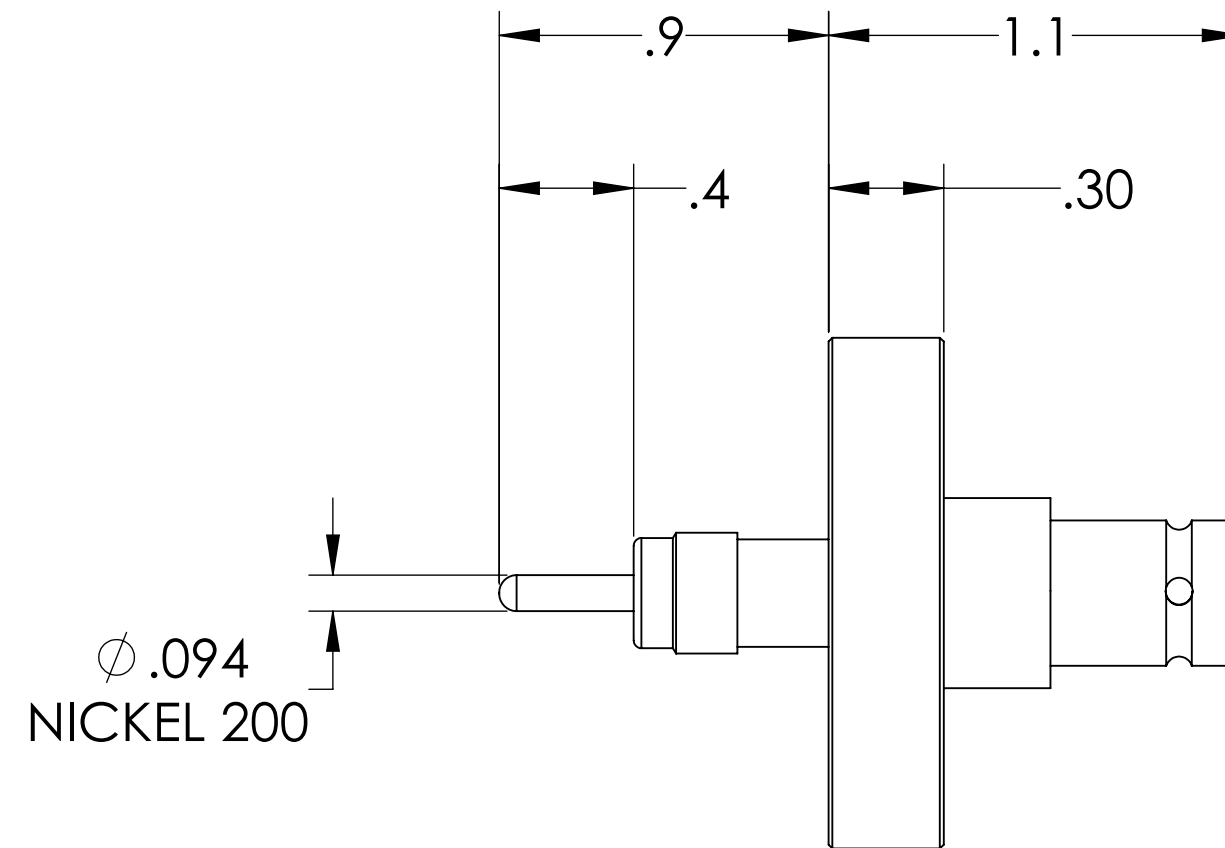
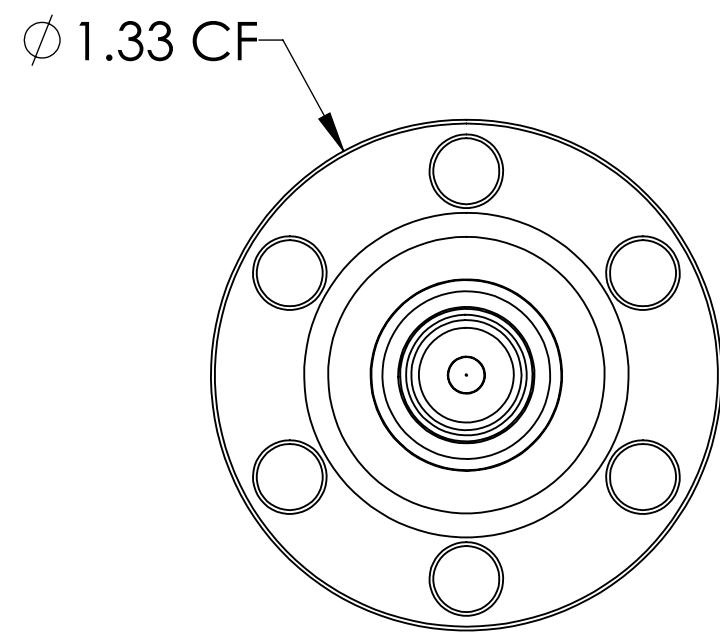
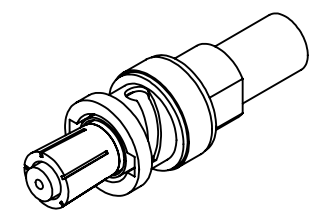


# MPF PRODUCTS INC.



PART #	AIRSIDE CONNECTOR INCLUDED
A0335-1-CF	YES
A0335-2-CF	NO



**NOTE:**

1. SHIELD: GROUNDED
2. VOLTAGE: 5000 VOLTS DC
3. CURRENT: 5 AMPS
4. TEMPERATURE RATING: -200 TO 450°C (FEEDTHROUGH), 65 TO 165°C (AIRSIDE CONNECTOR)
5. IMPEDANCE: NON-CONSTANT

SHV-5 Coaxial Feedthrough, 1 Pin, Grounded Shield, Exposed Insulator, 1.33" Conflat Flange, UHV Compatible

UNLESS OTHERWISE SPECIFIED:	QUOTATION #	N/A
DIMENSIONS ARE IN INCHES TOLERANCES:	NAME	DATE
ANGULAR: MACH ± 1/2°	WJ	9/11/2015
TWO PLACE DECIMAL ± .030	CHECKED	9/11/2015
THREE PLACE DECIMAL ± .015	ENG APPR.	WJ 9/11/2015
MATERIAL	THIRD ANGLE:	
	APPLICATION	
	NEXT ASSY	USED ON
FINISH	SURFACE FINISH:	63 OR BETTER
PLATING	UNLESS OTHERWISE SPECIFIED:	
	ALL DIAMETERS CONCENTRIC WITHIN .005. REMOVE ALL BURRS AND SHARP EDGES	
	TITLE:	MPF PRODUCTS INC.
		SHV-5 COAXIAL FEEDTHROUGH, 1 PIN, GROUNDED SHIELD, EXPOSED INSULATOR, 1.33" CONFLAT FLANGE
	DOWNLOADED FROM MPFPI.COM	
	DWG. NO.	A0335
	REV	
	Thursday, October 4, 2018 9:20:03 AM	