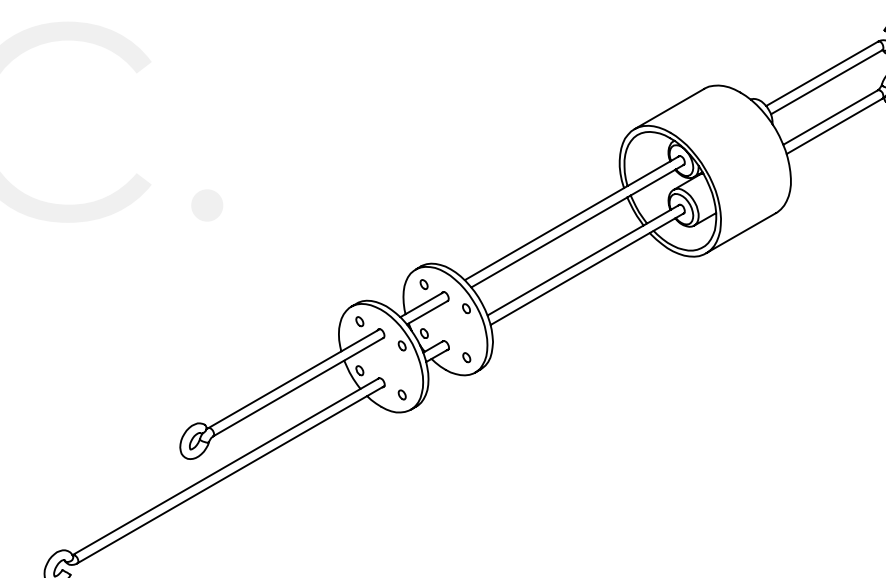
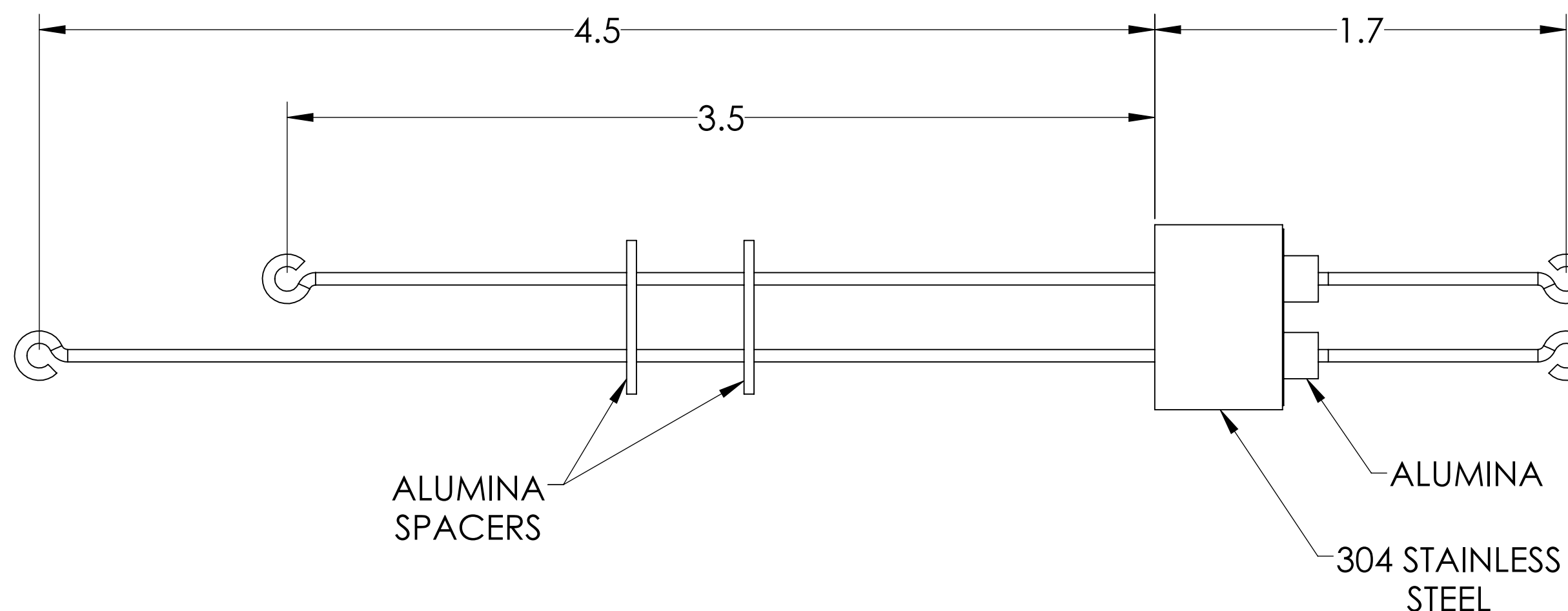
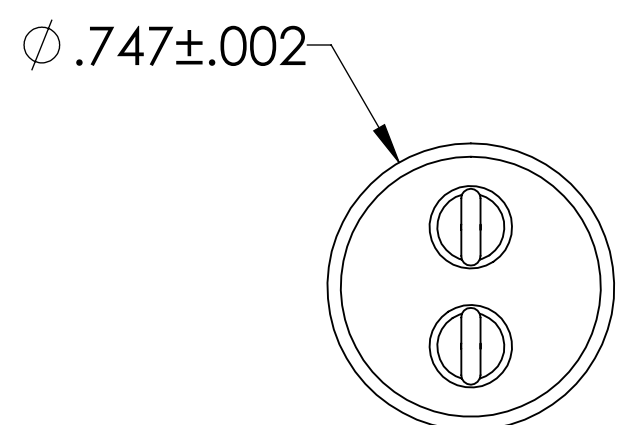


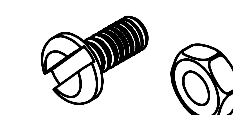
MPF PRODUCTS INC.



NOTES:
 * TYPE T:
 CONSTANTAN CONDUCTORS HAVE A NEGATIVE POLARITY (NON - MAGNETIC) AND THE VACUUM SIDE ENDS ARE LONGER.
 OFHC COPPER CONDUCTORS HAVE A POSITIVE POLARITY (NON - MAGNETIC) AND THE VACUUM SIDE ENDS ARE SHORTER.
 * TYPE N:
 NI-SI-MG CONDUCTORS HAVE A NEGATIVE POLARITY (NON - MAGNETIC) AND THE VACUUM SIDE ENDS ARE LONGER.
 NI-CR-SI CONDUCTORS HAVE A POSITIVE POLARITY (NON - MAGNETIC) AND THE VACUUM SIDE ENDS ARE SHORTER



PART #	T/C TYPE
A0397-1-W	T
A0397-3-W	N



SPECIFICATIONS:
 1. TEMPERATURE RATING: -100 TO 450°C
 2. LEAK RATE < 1X10-9 ATM CC/SEC HE

Thermocouple Feedthrough, 1 Pair, Screw-type Connector, 0.75" Dia Stainless Steel Weld Adapter

UNLESS OTHERWISE SPECIFIED:		QUOTATION #		N/A	
DIMENSIONS ARE IN INCHES TOLERANCES:		NAME	DATE	MPF PRODUCTS INC.	
ANGULAR: MACH ± 1/2°		DRAWN	9/11/2015		
TWO PLACE DECIMAL ± .030		CHECKED	9/11/2015		
THREE PLACE DECIMAL ± .015		ENG APPR.	9/11/2015		
MATERIAL		THIRD ANGLE:		TITLE: THERMOCOUPLE, 1 PAIR, SCREW-TYPE, .747" WELD ADAPTER	
FINISH					
PLATING		APPLICATION NEXT ASSY USED ON			
SURFACE FINISH:		63 OR BETTER		DOWNLOADED FROM MPFPI.COM DWG. NO. REV	
UNLESS OTHERWISE SPECIFIED:		ALL DIAMETERS CONCENTRIC WITHIN .005. REMOVE ALL BURRS AND SHARP EDGES		A0397 Wednesday, June 26, 2019 9:36:18 AM	