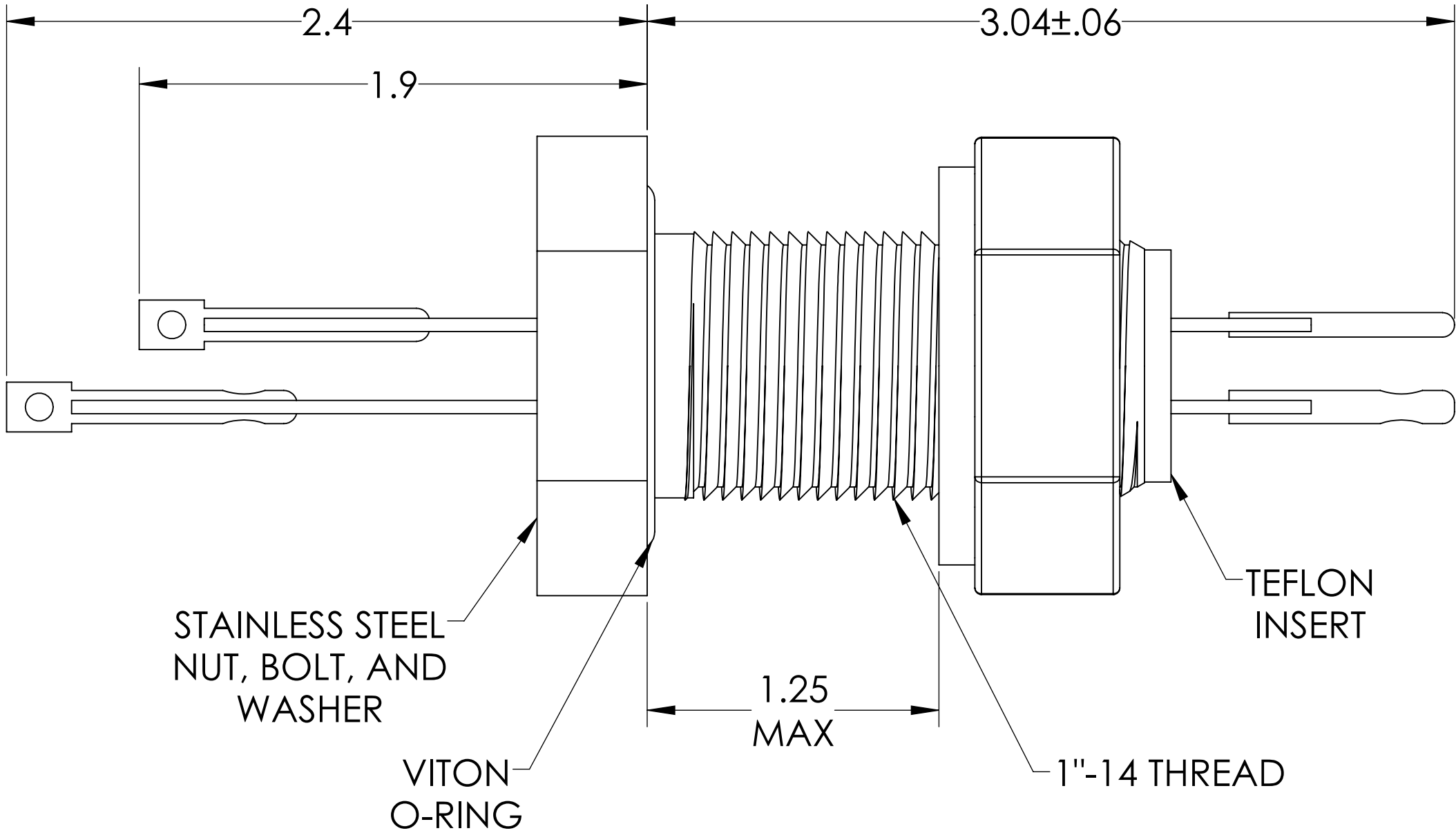
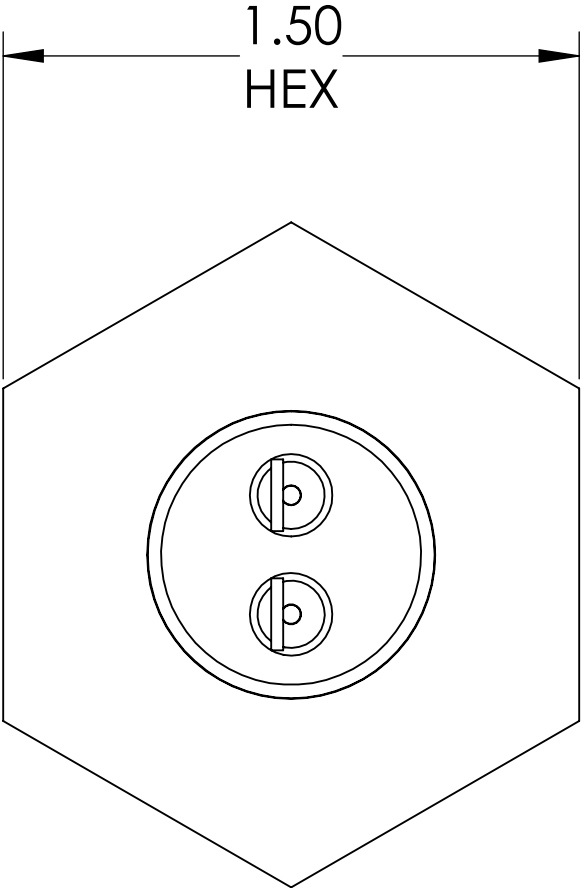
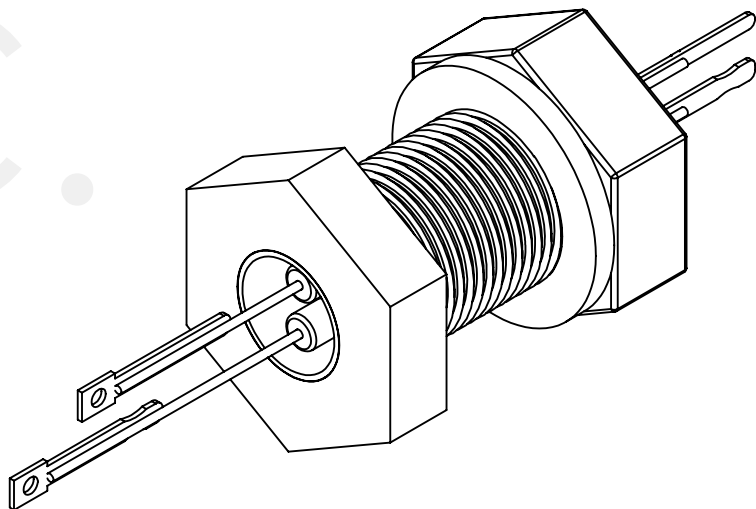
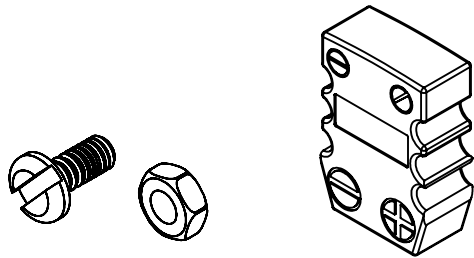


MPF PRODUCTS INC.



PART #	T/C TYPE
A0418-1-BP	J
A0418-2-BP	K
A0418-3-BP	C
A0418-4-BP	E



- SPECIFICATIONS:
- TEMPERATURE RATING: -100 TO 450°C
 - LEAK RATE < 1X10-9 ATM CC/SEC HE

Thermocouple Feedthrough, 1 Pair, Miniature Connector, 1" Baseplate Bolt

UNLESS OTHERWISE SPECIFIED: DIMENSIONS ARE IN INCHES TOLERANCES: ANGULAR: MACH ± 1/2° TWO PLACE DECIMAL ± .030 THREE PLACE DECIMAL ± .015 MATERIAL FINISH PLATING	QUOTATION #			N/A	
	DRAWN	NAME	DATE	MPF PRODUCTS INC. TITLE: THERMOCOUPLE, 1 PAIR, CONNECTOR, 1" BASPLATE DOWNLOADED FROM MPFPI.COM DWG. NO. A0418 REV.	
	CHECKED	WJ	9/11/2015		
	ENG APPR.	WJ	9/11/2015		
	THIRD ANGLE:				
	APPLICATION				
	NEXT ASSY			USED ON	
	SURFACE FINISH:			63/ OR BETTER	
	UNLESS OTHERWISE SPECIFIED:			ALL DIAMETERS CONCENTRIC WITHIN .005. REMOVE ALL BURRS AND SHARP EDGES	