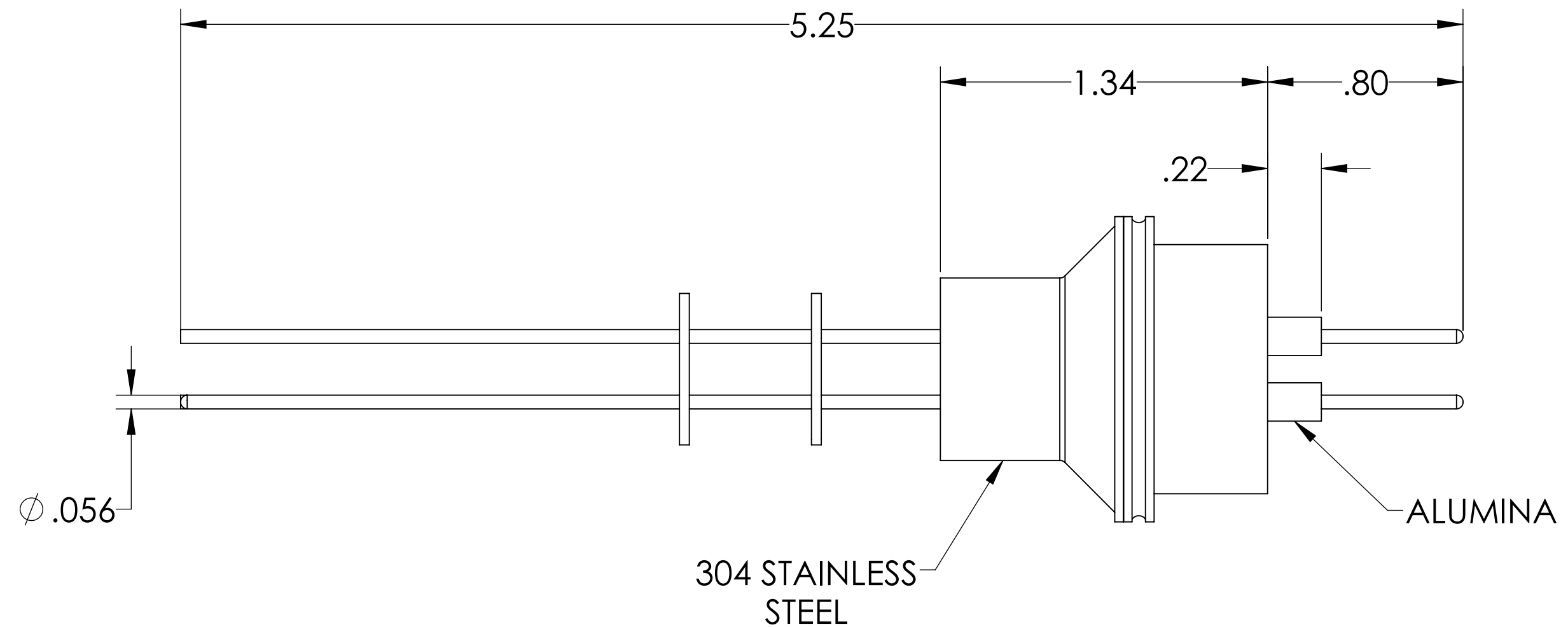
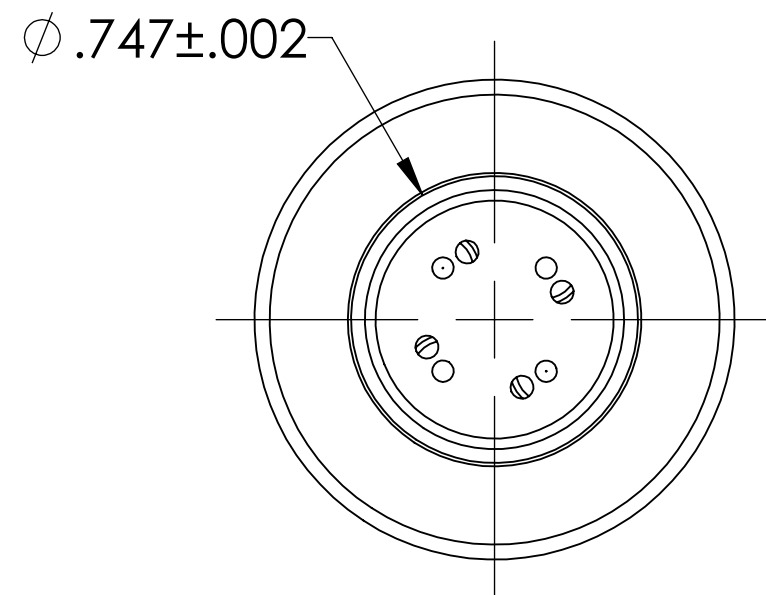
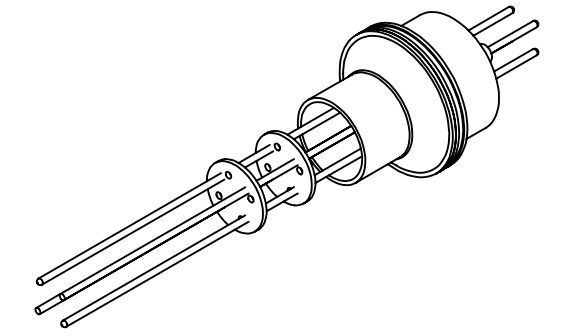


# MPF PRODUCTS INC.



**NOTE:**

1. VOLTAGE: 5000 VOLTS DC
2. CURRENT: 10 AMPS
3. TEMPERATURE RATING: -100 TO 450°C

Power Feedthrough, 2000 Volts, 4 Pins, 0.056" Alumel Conductors, 0.747" Dia. Stainless Steel Weld Adapter, UHV Rated, Bakeable to 450°C

UNLESS OTHERWISE SPECIFIED:		QUOTATION #		N/A		
DIMENSIONS ARE IN INCHES		NAME	DATE	MPF PRODUCTS INC.		
TOLERANCES:		DRAWN	WJ			9/11/2015
ANGULAR: MACH $\pm 1/2^\circ$		CHECKED	WJ			9/11/2015
TWO PLACE DECIMAL $\pm .030$		ENG APPR.	WJ			9/11/2015
THREE PLACE DECIMAL $\pm .015$		THIRD ANGLE:		POWER FEEDTHROUGH, 2000 VOLTS, 4 PINS, 0.747" WELD ADAPTER		
MATERIAL						
FINISH		APPLICATION				
PLATING		NEXT ASSY	USED ON			
SURFACE FINISH:		63 OR BETTER		DOWNLOADED FROM MPFPI.COM		
UNLESS OTHERWISE SPECIFIED:		ALL DIAMETERS CONCENTRIC WITHIN .005.		DWG. NO. A0421-4-W		
REMOVE ALL BURRS AND SHARP EDGES		Friday, January 18, 2019 11:15:04 AM		REV		