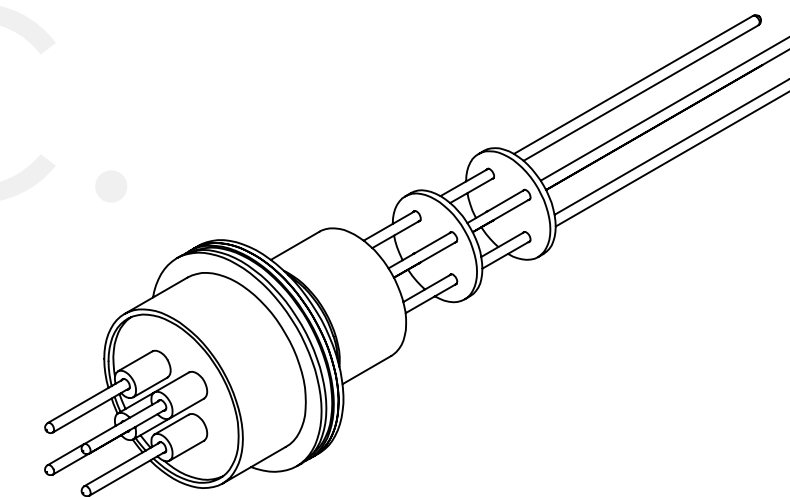
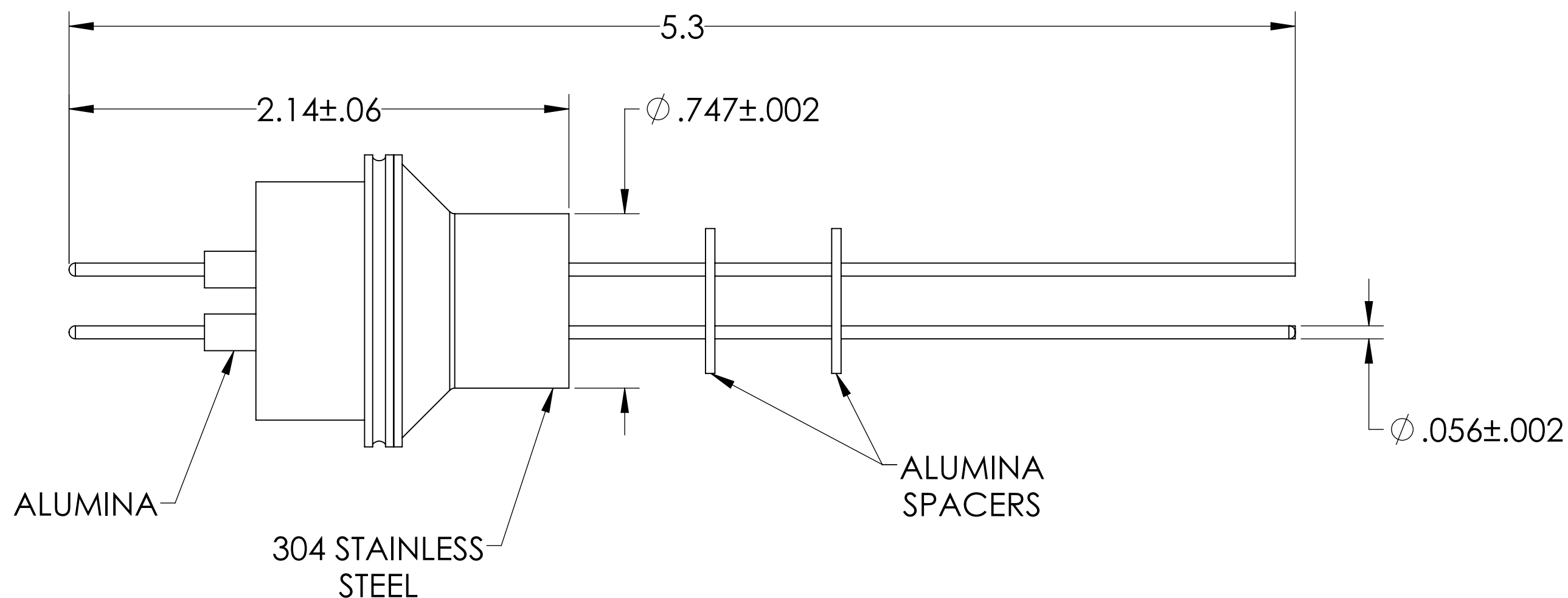
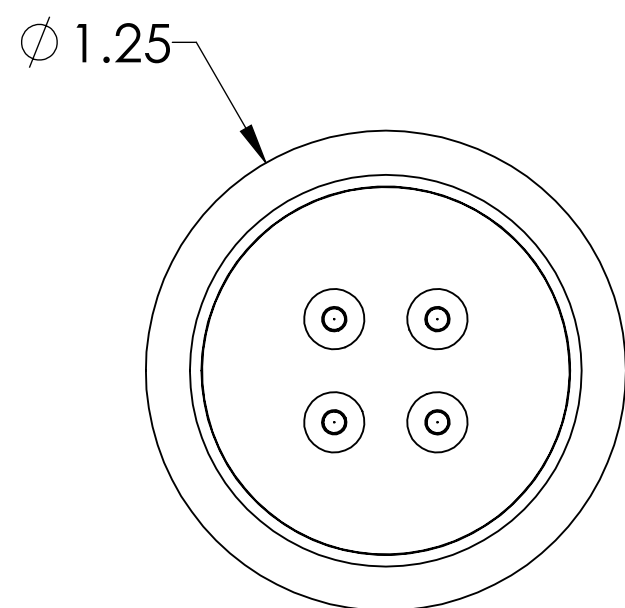


MPF PRODUCTS INC.



- NOTES:
 * TYPE K:
 ALUMEL CONDUCTORS HAVE A NEGATIVE POLARITY (MAGNETIC) AND THE VACUUM SIDE ENDS ARE FLAT.
 CHROMEL CONDUCTORS HAVE A POSITIVE POLARITY (NON - MAGNETIC) AND THE VACUUM SIDE ENDS HAVE A RADIUS.
 * TYPE J:
 CONSTANTAN CONDUCTORS HAVE A NEGATIVE POLARITY (NON - MAGNETIC) AND THE VACUUM SIDE ENDS ARE FLAT.
 IRON CONDUCTORS HAVE A POSITIVE POLARITY (MAGNETIC) AND THE VACUUM SIDE ENDS HAVE A RADIUS.
 * TYPE E:
 CONSTANTAN CONDUCTORS HAVE A NEGATIVE POLARITY (NON - MAGNETIC) AND THE VACUUM SIDE ENDS ARE FLAT.
 CHROMEL CONDUCTORS HAVE A POSITIVE POLARITY (NON - MAGNETIC) AND THE VACUUM SIDE ENDS HAVE A RADIUS.



PART #	T/C TYPE
A0421-1-W	K
A0421-2-W	J
A0421-3-W	E

SPECIFICATIONS:

- TEMPERATURE RATING: -100 TO 450°C
- LEAK RATE < 1X10-9 ATM CC/SEC HE

Thermocouple Feedthrough, 2 Pairs, 0.75" Dia Stainless Steel Weld Adapter

UNLESS OTHERWISE SPECIFIED:		QUOTATION #		N/A	
DIMENSIONS ARE IN INCHES TOLERANCES:		DRAWN	WJ	DATE	9/11/2015
ANGULAR: MACH ± 1/2°		CHECKED		9/11/2015	MPF PRODUCTS INC.
TWO PLACE DECIMAL ± .030		ENG APPR.	WJ	9/11/2015	
THREE PLACE DECIMAL ± .015		THIRD ANGLE:		TITLE:	
MATERIAL		APPLICATION		THERMOCOUPLE, 2 PAIRS, .747" WELD ADAPTER	
FINISH		SURFACE FINISH: 63 OR BETTER		DWG. NO.	
PLATING		UNLESS OTHERWISE SPECIFIED:		A0421	
		ALL DIAMETERS CONCENTRIC WITHIN .005. REMOVE ALL BURRS AND SHARP EDGES		REV	
		Friday, February 8, 2019 8:46:25 AM		DOWNLOADED FROM MPFPI.COM	