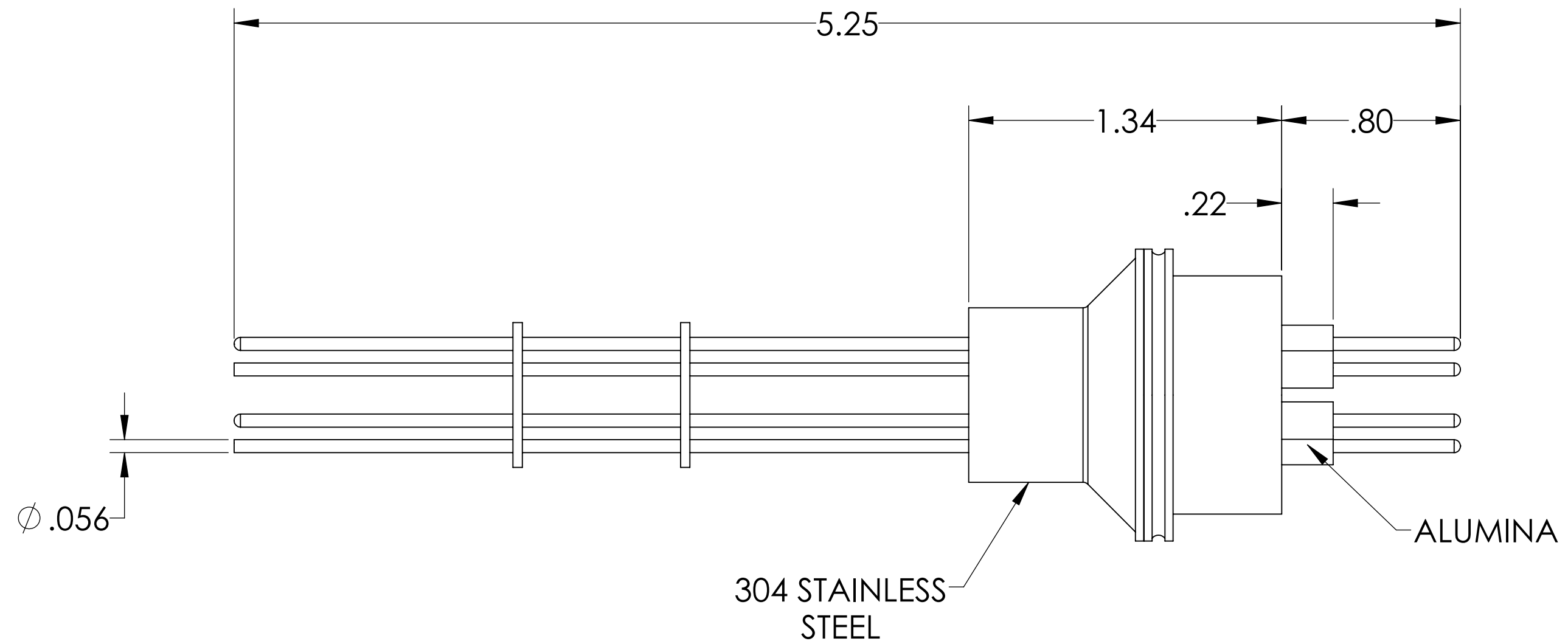
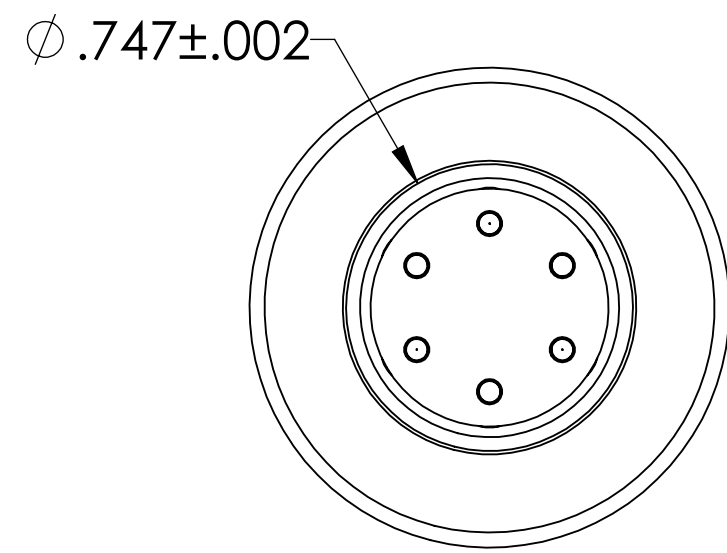
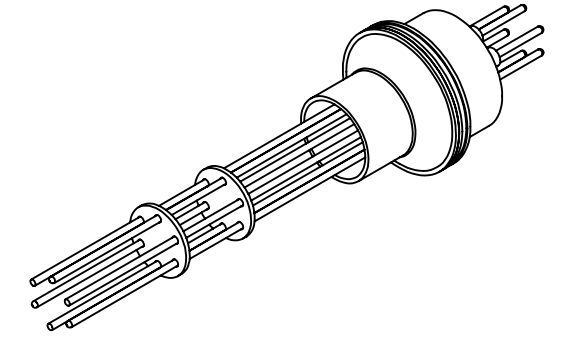


MPF PRODUCTS INC.



NOTE:

1. VOLTAGE: 5000 VOLTS DC
2. CURRENT: 10 AMPS
3. TEMPERATURE RATING: -100 TO 450°C

Power Feedthrough, 2000 Volts, 6 Pins, 0.056" Alumel Conductors, 0.747" Dia. Stainless Steel Weld Adapter, UHV Rated, Bakeable to 450°C

UNLESS OTHERWISE SPECIFIED:		QUOTATION #		N/A	
DIMENSIONS ARE IN INCHES		NAME	DATE	MPF PRODUCTS INC.	
TOLERANCES:		DRAWN	9/11/2015		
ANGULAR: MACH ± 1/2°		CHECKED	9/11/2015		
TWO PLACE DECIMAL ± .030		ENG APPR.	9/11/2015		
THREE PLACE DECIMAL ± .015		THIRD ANGLE:		POWER FEEDTHROUGH, 2000 VOLTS, 6 PINS, 0.747" WELD ADAPTER	
MATERIAL					
FINISH		APPLICATION			
PLATING		NEXT ASSY USED ON			
SURFACE FINISH: 63 OR BETTER		SURFACE FINISH: 63 OR BETTER		DOWNLOADED FROM MPFPI.COM	
UNLESS OTHERWISE SPECIFIED:		UNLESS OTHERWISE SPECIFIED:		DWG. NO. A0422-4-W	
ALL DIAMETERS CONCENTRIC WITHIN .005.		REMOVE ALL BURRS AND SHARP EDGES		REV	
				Friday, January 18, 2019 11:15:30 AM	