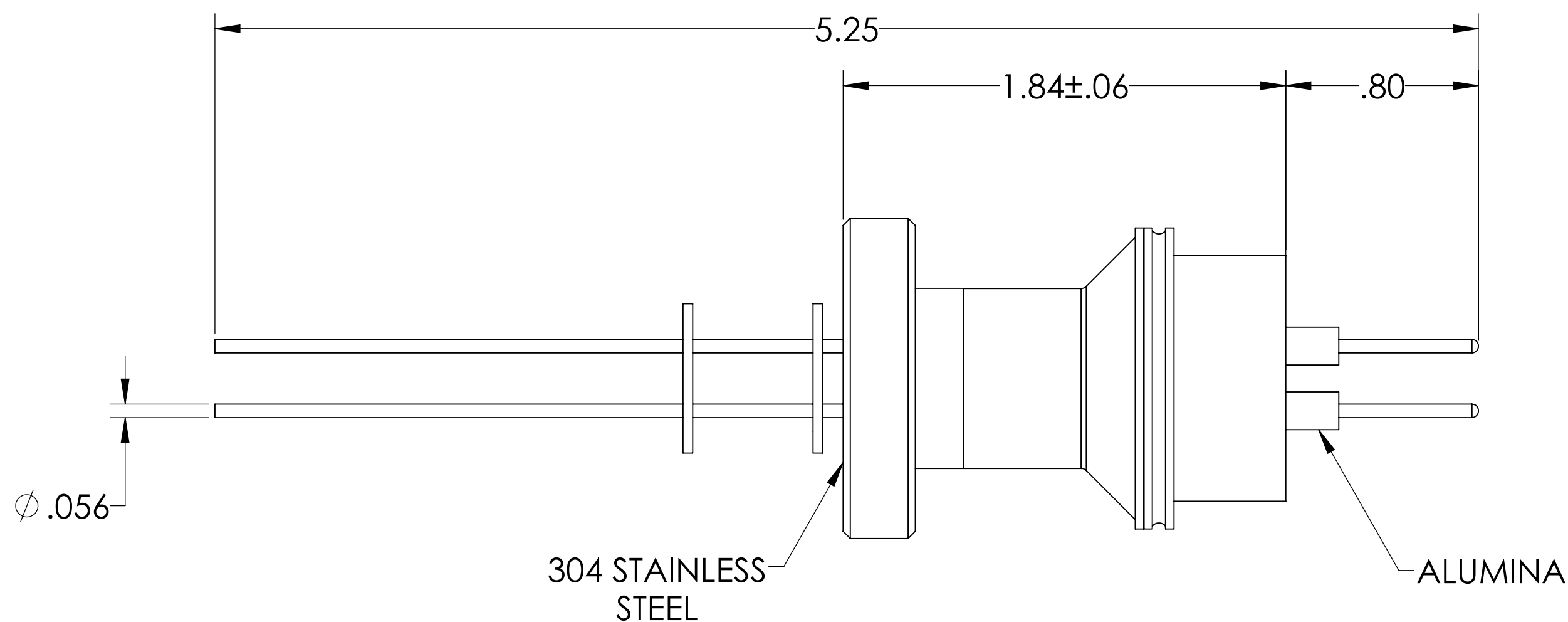
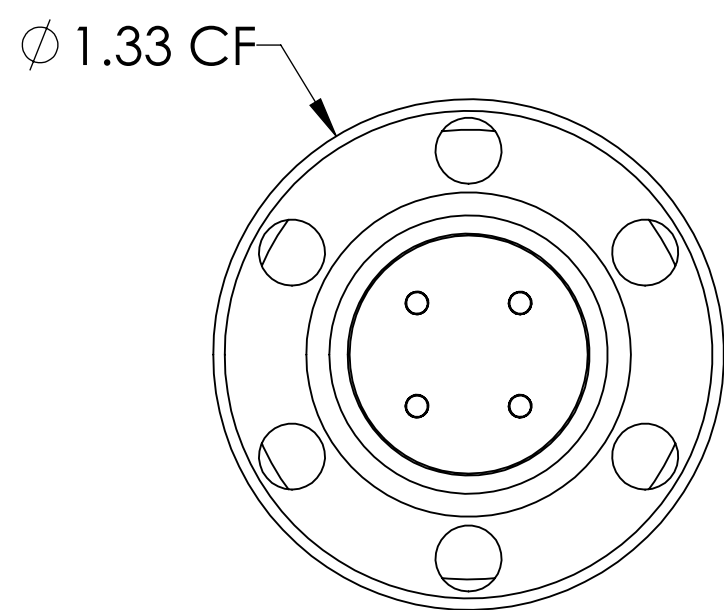
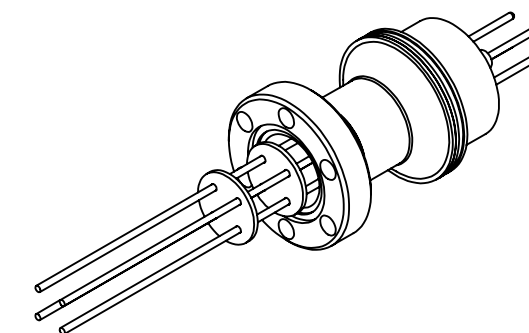


MPF PRODUCTS INC.



- NOTE:
1. VOLTAGE: 2000 VOLTS DC
 2. CURRENT: 10 AMPS
 3. TEMPERATURE RATING: -100 TO 450°C

Power Feedthrough, 2000 Volts, 4 Pins, 0.056" Alumel Conductors, 1.33" Conflat Flange, UHV Rated, Bakeable to 450°C

UNLESS OTHERWISE SPECIFIED:		QUOTATION #		N/A	
DIMENSIONS ARE IN INCHES TOLERANCES:		NAME	DATE	MPF PRODUCTS INC. TITLE: POWER FEEDTHROUGH, 2000 VOLTS, 4 PINS, 1.33" CONFLAT FLANGE	
ANGULAR: MACH ± 1/2°		DRAWN	9/11/2015		
TWO PLACE DECIMAL ± .030		CHECKED	9/11/2015		
THREE PLACE DECIMAL ± .015		ENG APPR.	9/11/2015		
MATERIAL		THIRD ANGLE:		DOWNLOAD FROM MPFPI.COM DWG. NO. A0423-4-CF REV.	
FINISH					
PLATING		APPLICATION: NEXT ASSY: USED ON:			
SURFACE FINISH:		63/ OR BETTER		SURFACE FINISH: 63/ OR BETTER UNLESS OTHERWISE SPECIFIED: ALL DIAMETERS CONCENTRIC WITHIN .005. REMOVE ALL BURRS AND SHARP EDGES	
UNLESS OTHERWISE SPECIFIED: ALL DIAMETERS CONCENTRIC WITHIN .005. REMOVE ALL BURRS AND SHARP EDGES		THURSDAY, DECEMBER 13, 2018 10:27:22 AM		Thursday, December 13, 2018 10:27:22 AM	