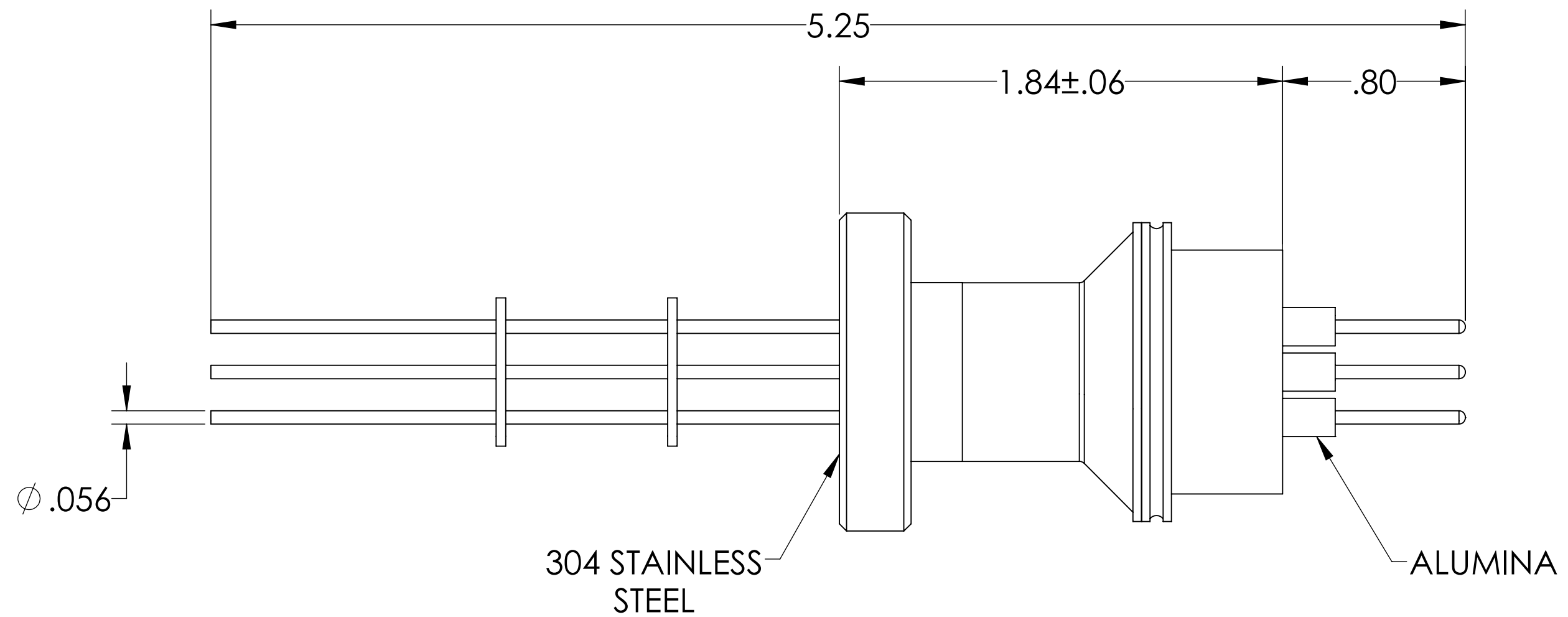
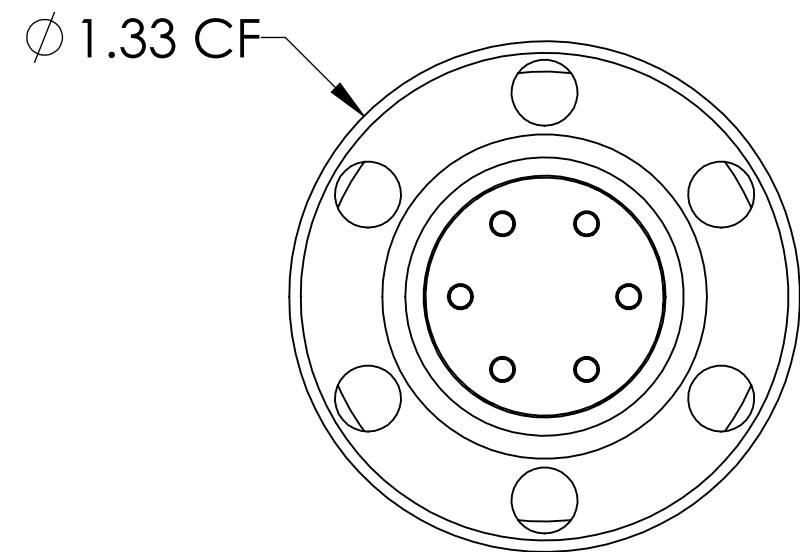
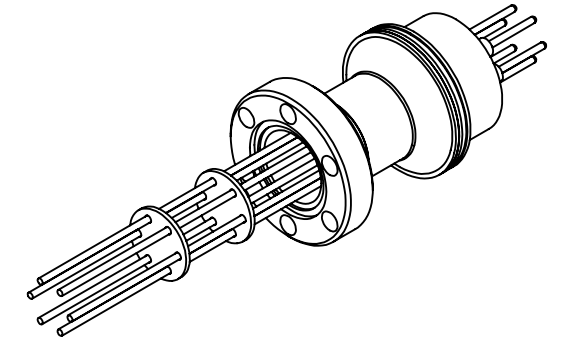


# MPF PRODUCTS INC.



**NOTE:**

1. VOLTAGE: 2000 VOLTS DC
2. CURRENT: 10 AMPS
3. TEMPERATURE RATING: -100 TO 450°C

Power Feedthrough, 2000 Volts, 6 Pins, 0.056" Alumel Conductors, 1.33" Conflat Flange, UHV Rated, Bakeable to 450°C

UNLESS OTHERWISE SPECIFIED:	QUOTATION #		N/A
DIMENSIONS ARE IN INCHES TOLERANCES:	NAME	DATE	<b>MPF PRODUCTS INC.</b>
ANGULAR: MACH ± 1/2°	DRAWN	9/11/2015	
TWO PLACE DECIMAL ± .030	CHECKED	9/11/2015	
THREE PLACE DECIMAL ± .015	ENG APPR.	WJ 9/11/2015	
MATERIAL	THIRD ANGLE:		POWER FEEDTHROUGH, 2000 VOLTS, 6 PINS, 1.33" CONFLAT FLANGE
FINISH	APPLICATION		DOWNLOADED FROM MPFPI.COM
PLATING	NEXT ASSY	USED ON	
	SURFACE FINISH: 63 OR BETTER		DWG. NO.
	UNLESS OTHERWISE SPECIFIED:		A0423-8-CF
	ALL DIAMETERS CONCENTRIC WITHIN .005. REMOVE ALL BURRS AND SHARP EDGES		REV.