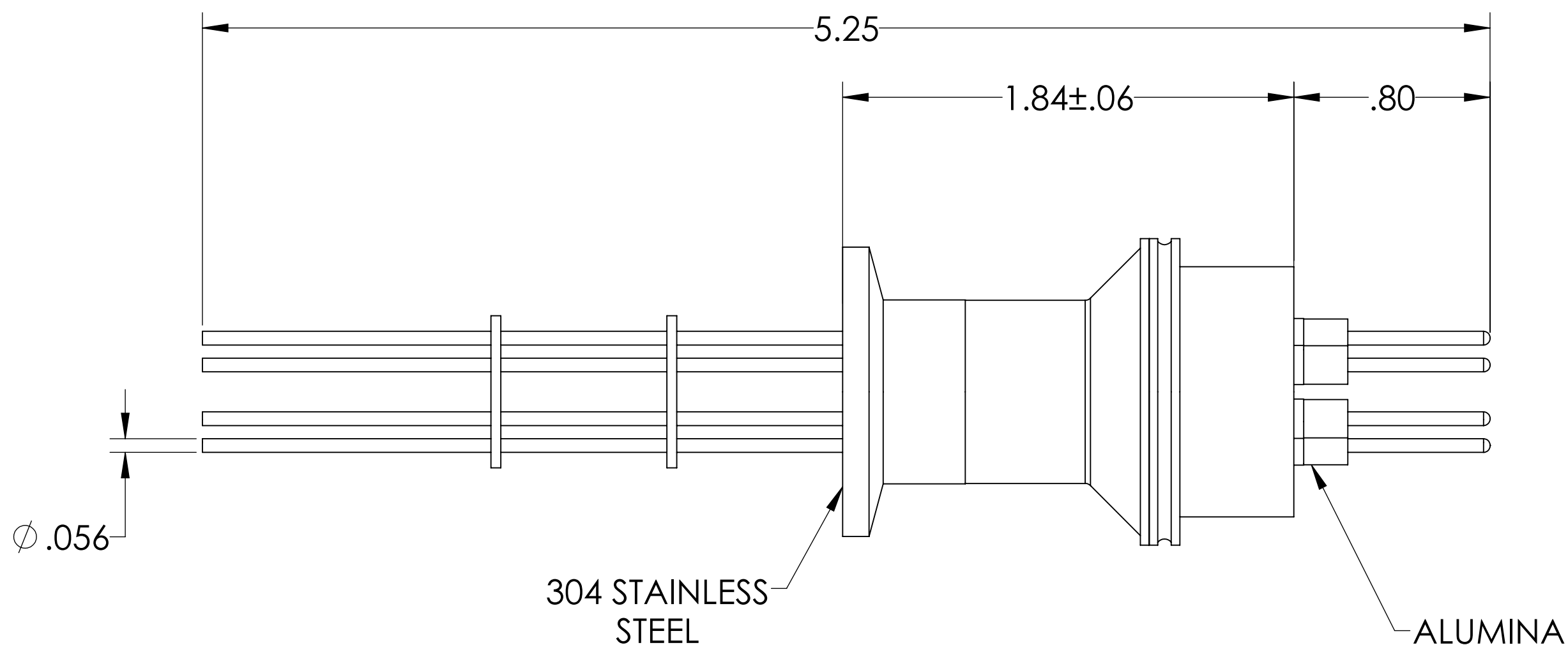
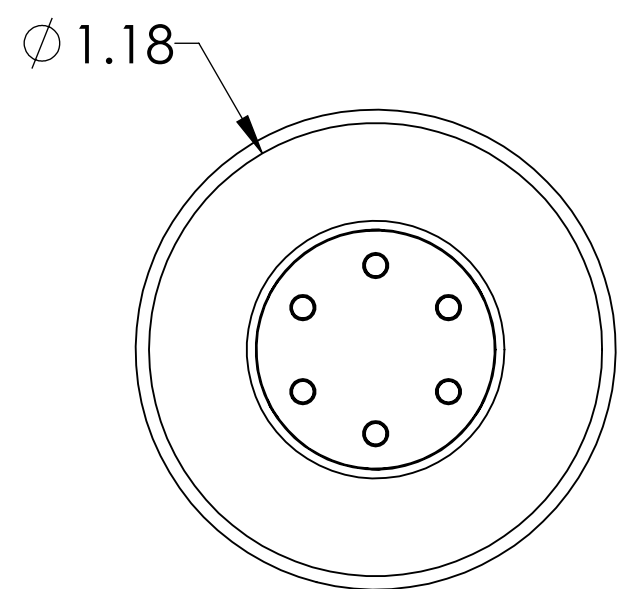
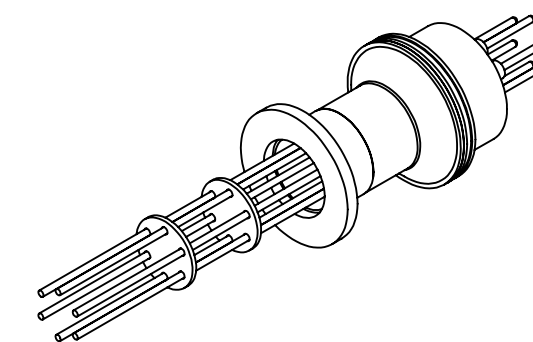


MPF PRODUCTS INC.



NOTE:

1. VOLTAGE: 2000 VOLTS DC
2. CURRENT: 10 AMPS
3. TEMPERATURE RATING: -100 TO 450°C

Power Feedthrough, 2000 Volts, 6 Pins, 0.056" Alumel Conductors, 1.18" QF/KF, UHV Rated, Bakeable to 450°C

UNLESS OTHERWISE SPECIFIED:		QUOTATION #		N/A	
DIMENSIONS ARE IN INCHES TOLERANCES:		NAME	DATE	MPF PRODUCTS INC.	
ANGULAR: MACH ± 1/2°		DRAWN	9/11/2015		
TWO PLACE DECIMAL ± .030		CHECKED	9/11/2015		
THREE PLACE DECIMAL ± .015		ENG APPR.	9/11/2015		
MATERIAL		THIRD ANGLE:		TITLE: POWER FEEDTHROUGH, 2000 VOLTS, 6 PINS 1.18" QF/KF DOWNLOADED FROM MPFPI.COM DWG. NO. A0425-8-QF REV.	
FINISH					
PLATING		APPLICATION			
		NEXT ASSY	USED ON		
		SURFACE FINISH: 63/ OR BETTER		Thursday, December 13, 2018 10:53:13 AM	
		UNLESS OTHERWISE SPECIFIED:			
		ALL DIAMETERS CONCENTRIC WITHIN .005. REMOVE ALL BURRS AND SHARP EDGES			