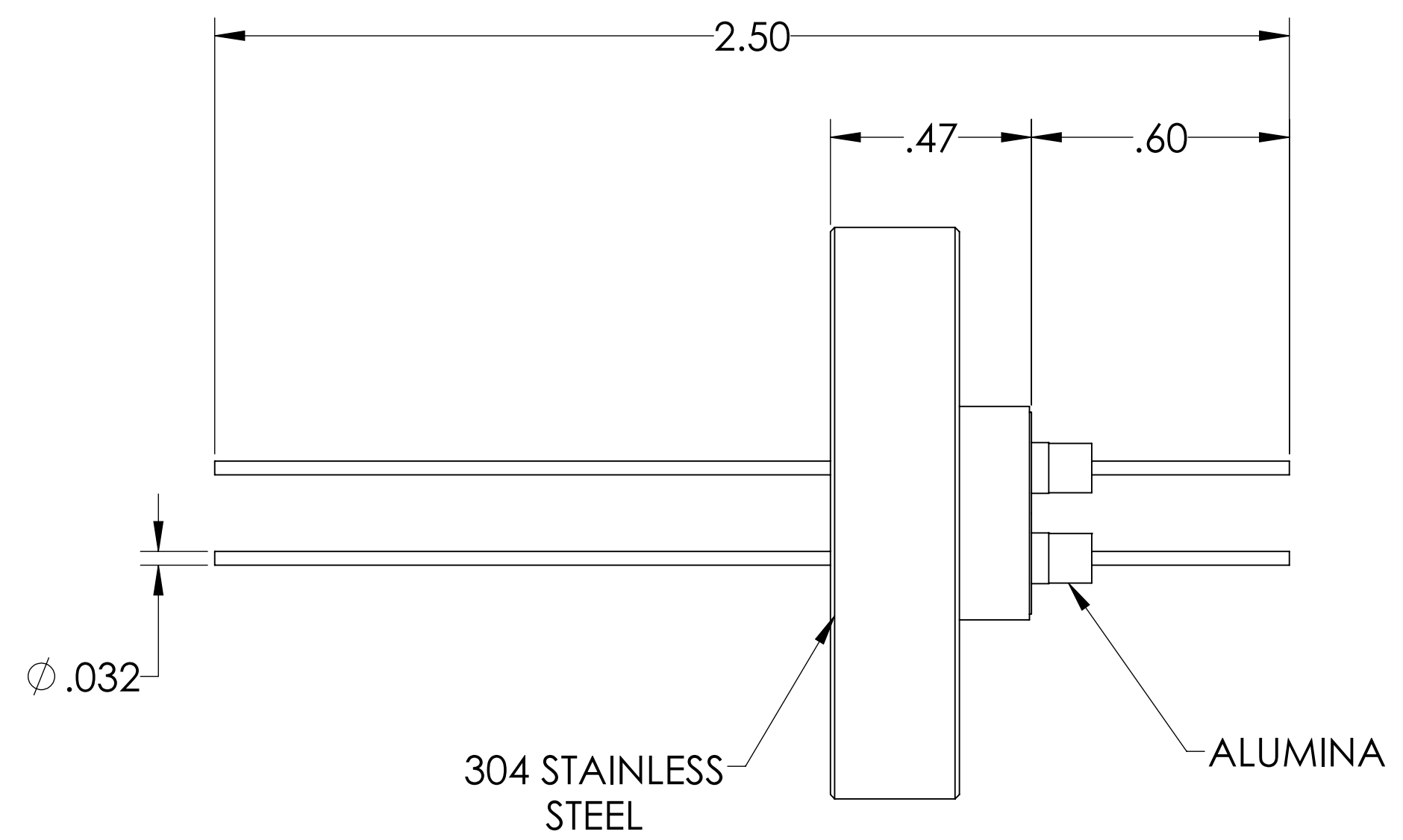
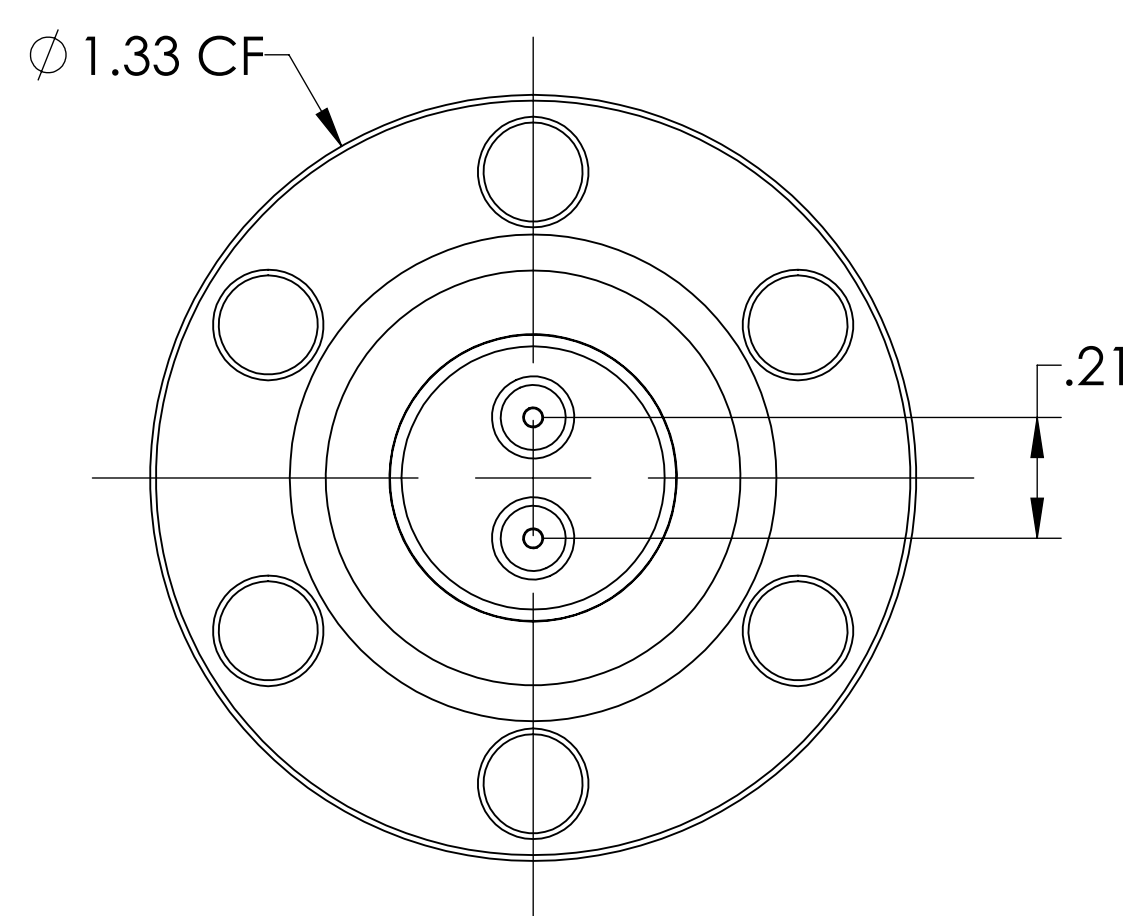
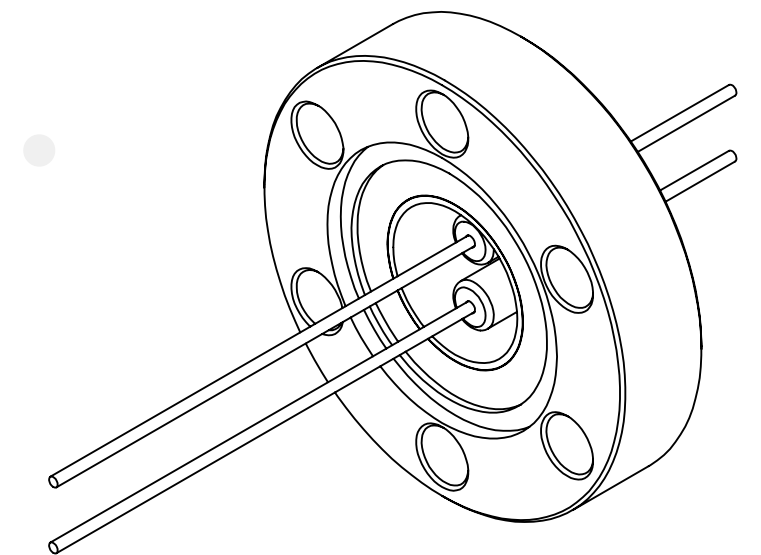


# MPF PRODUCTS INC.



PART #	CONDCUTOR MATERIAL	CURRENT RATING
A0496-1-CF	NICKEL 200	5 AMPS
A0496-2-CF	STN STL	1 AMP
A0496-3-CF	COPPER	15 AMPS
A0496-4-CF	MOLYBDENUM	8 AMPS

- NOTE:
1. VOLTAGE: 500 VOLTS DC
  2. CURRENT: SEE TABLE
  3. TEMPERATURE RATING: -100 TO 450°C

Power Feedthrough, 500 Volts, 2 Pins, 0.032" Conductor, 1.33" Conflat Flange, UHV Rated, Bakeable to 450°C

UNLESS OTHERWISE SPECIFIED:		QUOTATION #		N/A	
DIMENSIONS ARE IN INCHES		NAME	DATE	MPF PRODUCTS INC.	
TOLERANCES:		DRAWN	9/11/2015		
ANGULAR: MACH ± 1/2°		CHECKED	9/11/2015		
TWO PLACE DECIMAL ± .030		ENG APPR.	9/11/2015		
THREE PLACE DECIMAL ± .015		THIRD ANGLE:		POWER FEEDTHROUGH, 500 VOLTS, 2 PINS, 1.33" CONFLAT FLANGE	
MATERIAL		APPLICATION			
FINISH		SURFACE FINISH: 63 OR BETTER			
PLATING		UNLESS OTHERWISE SPECIFIED:		DWG. NO. A0496	
		ALL DIAMETERS CONCENTRIC WITHIN .005. REMOVE ALL BURRS AND SHARP EDGES		REV	
		Tuesdays, December 4, 2018 4:22:09 PM			