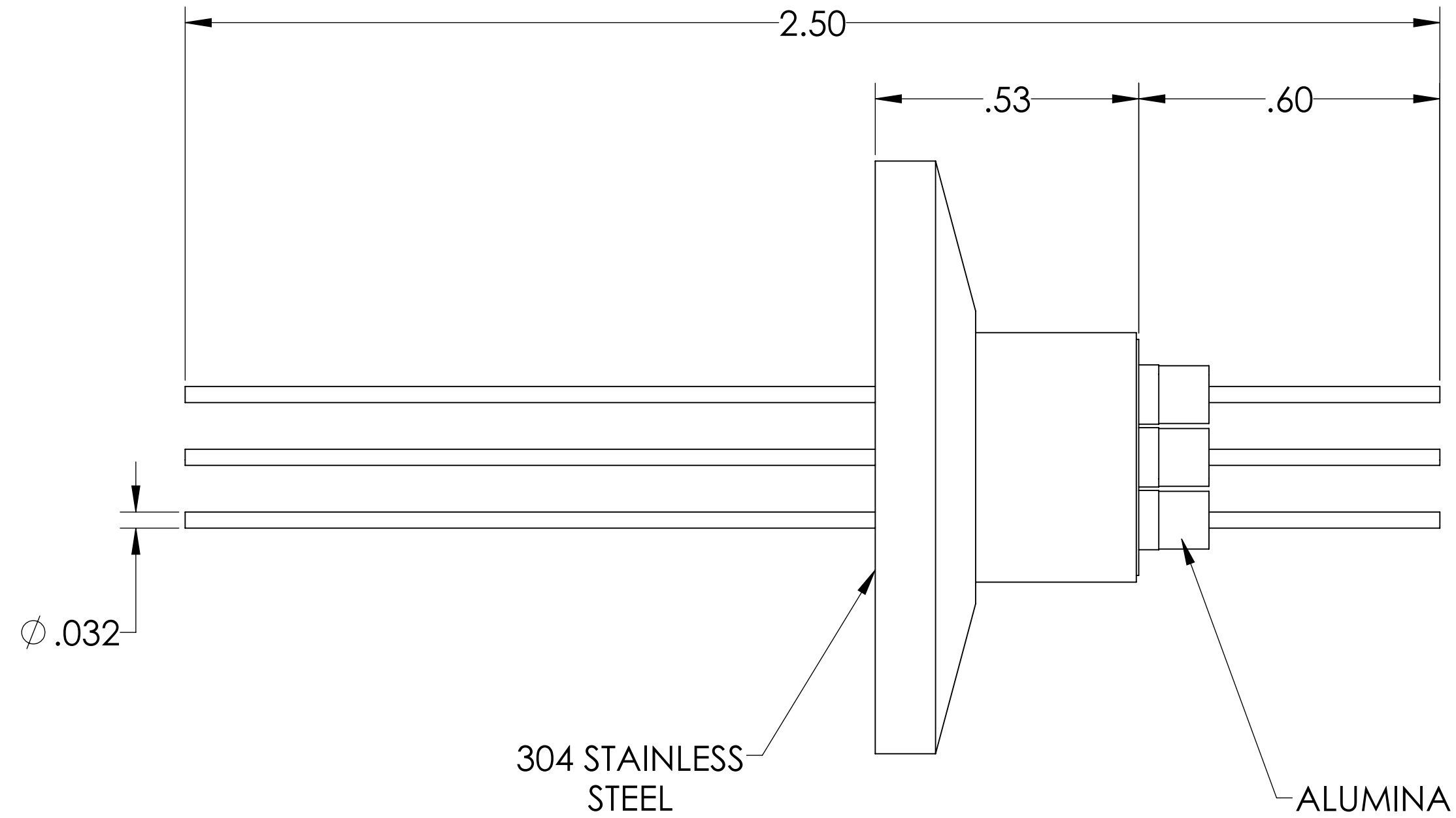
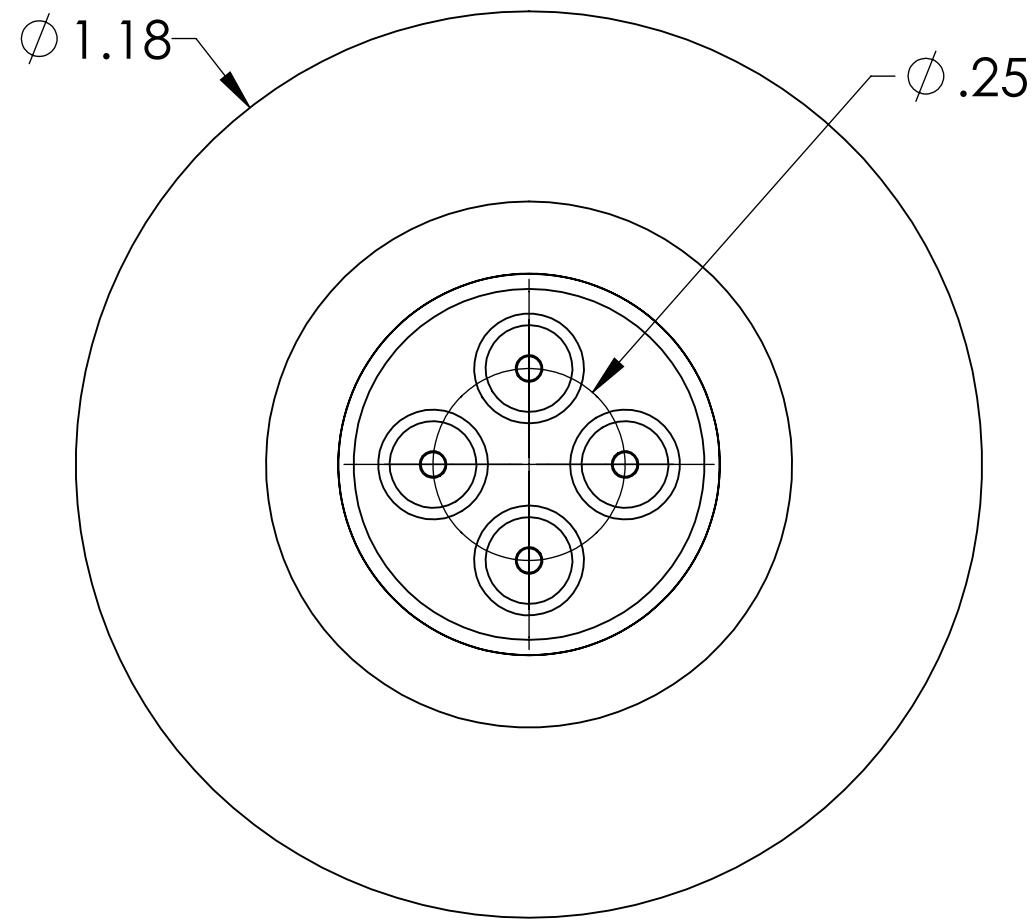
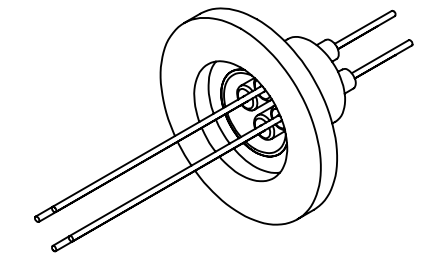


MPF PRODUCTS INC.



PART #	CONDUCTOR MATERIAL	CURRENT RATING
A0501-1-QF	NICKEL	5 AMPS
A0501-2-QF	STN STL	1 AMP
A0501-3-QF	OFHC COPPER	15 AMPS
A0501-4-QF	MOLYBDENUM	8 AMPS

NOTE:

- VOLTAGE: 500 VOLTS DC
- CURRENT: SEE TABLE
- TEMPERATURE RATING: -100 TO 450°C

Power Feedthrough, 500 Volts, 4 Pins, 0.032" Conductor, 1.18" QF/KF, UHV Rated, Bakeable to 450°C

UNLESS OTHERWISE SPECIFIED:		QUOTATION #		N/A	
DIMENSIONS ARE IN INCHES TOLERANCES:		NAME	DATE	MPF PRODUCTS INC.	
ANGULAR: MACH ± 1/2°		DRAWN	9/11/2015		
TWO PLACE DECIMAL ± .030		CHECKED	9/11/2015		
THREE PLACE DECIMAL ± .015		ENG APPR.	9/11/2015		
MATERIAL		THIRD ANGLE:		POWER FEEDTHROUGH, 500 VOLTS, 4 PINS, 1.18" QF/KF	
FINISH		APPLICATION			
PLATING		NEXT ASSY	USED ON		
		SURFACE FINISH: $\sqrt{63}$ OR BETTER			
		UNLESS OTHERWISE SPECIFIED:		DWG. NO. A0501	
		ALL DIAMETERS CONCENTRIC WITHIN .005. REMOVE ALL BURRS AND SHARP EDGES		REV	
				Downloaded from MPFPI.COM	
				Wednesday, December 5, 2018 10:43:10 AM	