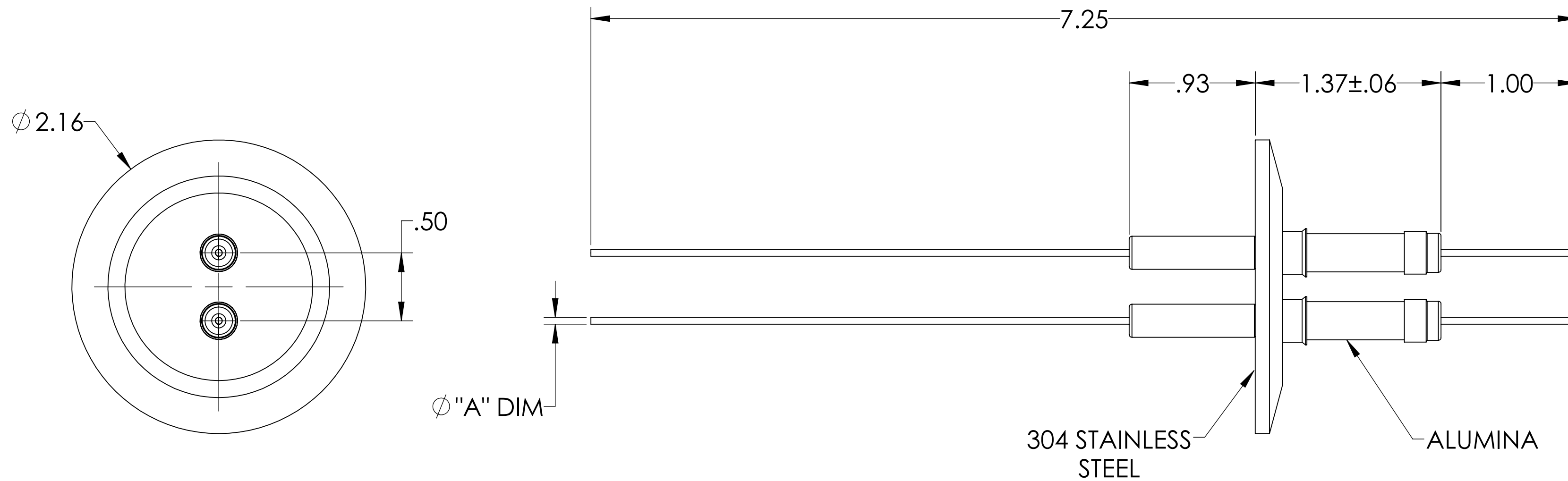
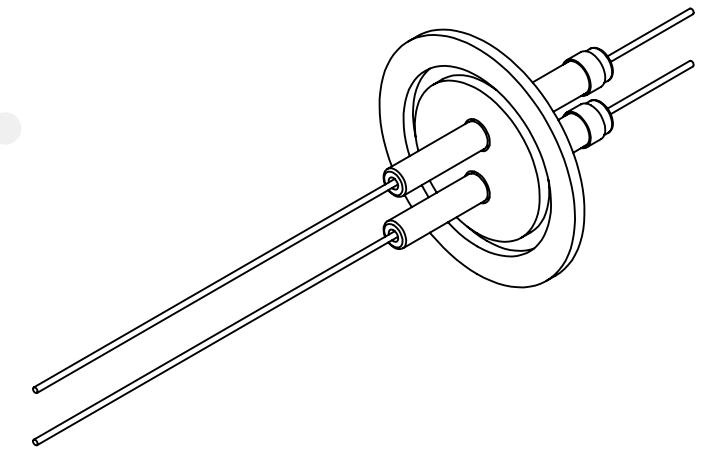


MPF PRODUCTS INC.



PART #	CONDUCTOR MATERIAL	Ø "A" DIM	CURRENT RATING
A0507-1-QF	NICKEL 200	.092	15 AMPS
A0507-2-QF	OFHC COPPER	.094	50 AMPS
A0507-5-QF	304 STN STL	.094	3 AMPS

NOTE:

1. VOLTAGE: 14,000 VOLTS DC
2. CURRENT: SEE TABLE
3. TEMPERATURE RATING: -100 TO 450°C

Power Feedthrough, 14 KV, 2 Pins, 2.16" QF/KF, UHV Rated, Bakeable to 450°C

UNLESS OTHERWISE SPECIFIED:	QUOTATION #	N/A
DIMENSIONS ARE IN INCHES TOLERANCES:	NAME	DATE
ANGULAR: MACH ± 1/2°	DRAWN	9/11/2015
TWO PLACE DECIMAL ± .030	CHECKED	9/11/2015
THREE PLACE DECIMAL ± .015	ENG APPR.	WJ 9/11/2015
MATERIAL	THIRD ANGLE:	
	APPLICATION	
	NEXT ASSY	USED ON
FINISH	SURFACE FINISH:	63/ OR BETTER
PLATING	UNLESS OTHERWISE SPECIFIED:	
	ALL DIAMETERS CONCENTRIC WITHIN .005. REMOVE ALL BURRS AND SHARP EDGES	
	TITLE:	MPF PRODUCTS INC.
		POWER FEEDTHROUGH, 14 KV, 2 PINS, 2.16" QF/KF
	DOWNLOADED FROM MPFPI.COM	
	DWG. NO.	A0507
	REV	
	Thursday, January 17, 2019 12:03:38 PM	