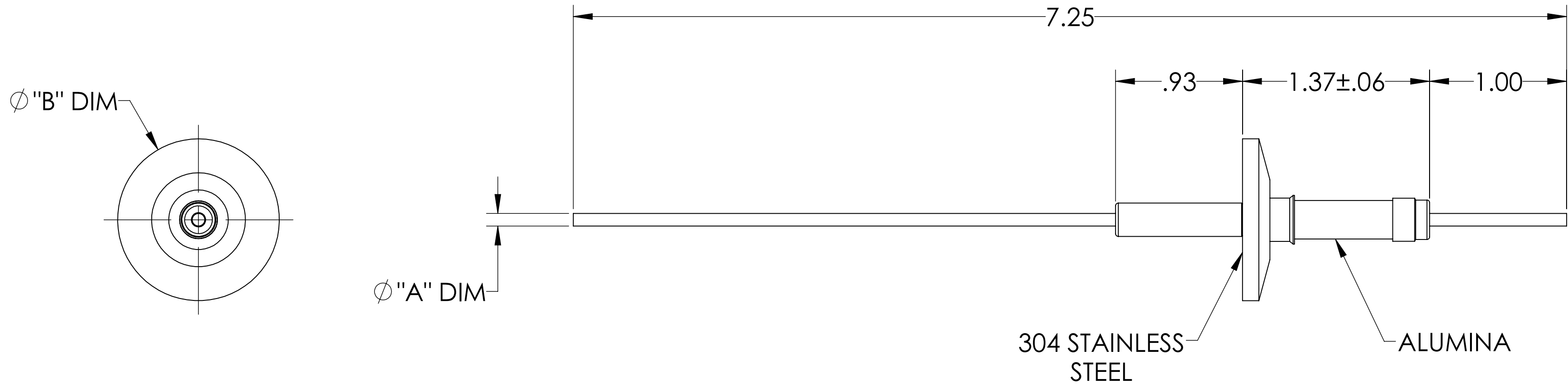
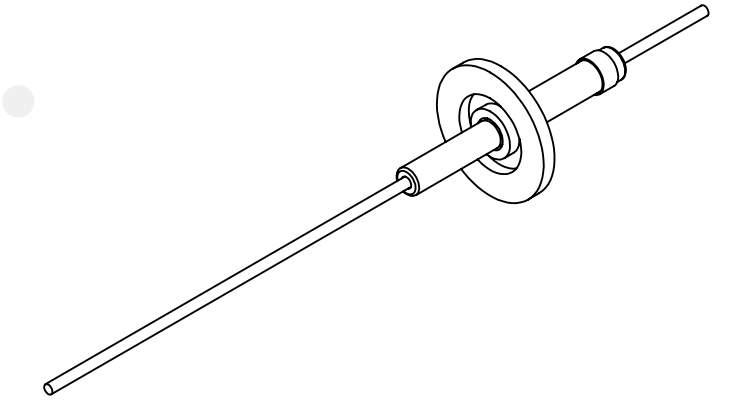


MPF PRODUCTS INC.



PART #	Ø "A" DIM	Ø "B" DIM	CONDUCTOR MATERIAL	CURRENT RATING
A0508-1-QF	.092	1.18	NICKEL 200	15 AMPS
A0508-2-QF	.094	1.18	OFHC COPPER	50 AMPS
A0508-3-QF	.094	1.18	304 STN STL	3 AMPS
A0508-7-QF	.092	2.16	NICKEL 200	15 AMPS
A0508-8-QF	.094	2.16	OFHC COPPER	50 AMPS
A0508-9-QF	.094	2.16	304 STN STL	3 AMPS

- NOTE:
- VOLTAGE: 14,000 VOLTS DC
 - CURRENT: SEE TABLE
 - TEMPERATURE RATING: -100 TO 450°C

Power Feedthrough, 14 KV, 1 Pin, QF/KF, UHV Rated, Bakeable to 450°C

UNLESS OTHERWISE SPECIFIED:		QUOTATION #		N/A	
DIMENSIONS ARE IN INCHES		NAME	DATE	MPF PRODUCTS INC.	
TOLERANCES:		DRAWN	9/11/2015		
ANGULAR: MACH ± 1/2°		CHECKED	9/11/2015		
TWO PLACE DECIMAL ± .030		ENG APPR.	9/11/2015		
THREE PLACE DECIMAL ± .015		THIRD ANGLE:		POWER FEEDTHROUGH, 14 KV, 1 PIN, QF/KF	
MATERIAL		APPLICATION			
FINISH		NEXT ASSY USED ON			
PLATING		SURFACE FINISH: 63 OR BETTER		DOWNLOADED FROM MPFPI.COM	
UNLESS OTHERWISE SPECIFIED:		ALL DIAMETERS CONCENTRIC WITHIN .005.		DWG. NO. A0508	
REMOVE ALL BURRS AND SHARP EDGES		Thursday, January 17, 2019 12:43:17 PM		REV	