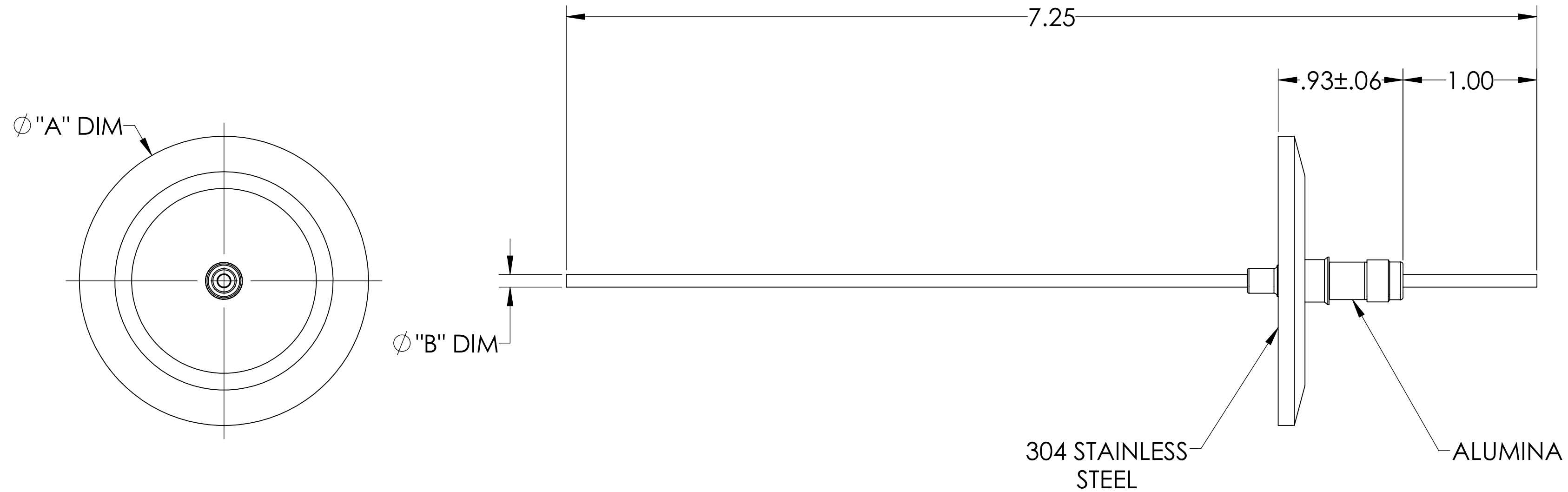
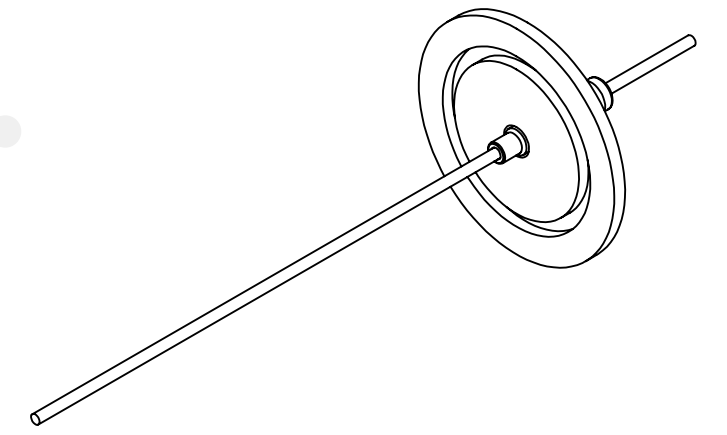


MPF PRODUCTS INC.



PART #	ϕ "A" DIM	ϕ "B" DIM	CONDUCTOR MATERIAL	CURRENT RATING
A0516-1-QF	1.18	.092	NICKEL 200	15 AMPS
A0516-2-QF	1.18	.094	OFHC COPPER	50 AMPS
A0516-7-QF	2.16	.092	NICKEL 200	15 AMPS
A0516-8-QF	2.16	.094	OFHC COPPER	50 AMPS
A0516-13-QF	1.57	.094	OFHC COPPER	50 AMPS
A0516-14-QF	1.57	.092	NICKEL 200	15 AMPS
A0516-15-QF	1.18	.094	MOLYBDENUM	28 AMPS
A0516-16-QF	1.57	.094	MOLYBDENUM	28 AMPS
A0516-17-QF	2.16	.094	MOLYBDENUM	28 AMPS

NOTE:

1. VOLTAGE: 5,000 VOLTS DC
2. CURRENT: SEE TABLE
3. TEMPERATURE RATING: -100 TO 450°C

Power Feedthrough, 5,000 Volts, 1 Pins, QF/KF, UHV Rated, Bakeable to 450°C

UNLESS OTHERWISE SPECIFIED:		QUOTATION #		N/A	
DIMENSIONS ARE IN INCHES TOLERANCES:		NAME	DATE	MPF PRODUCTS INC.	
ANGULAR: MACH ± 1/2°		DRAWN	9/11/2015		
TWO PLACE DECIMAL ± .030		CHECKED	9/11/2015		
THREE PLACE DECIMAL ± .015		ENG APPR.	9/11/2015		
MATERIAL		THIRD ANGLE:		POWER FEEDTHROUGH, 5000 VOLTS, 1 PIN, QF/KF	
FINISH		APPLICATION			
PLATING		NEXT ASSY USED ON			
SURFACE FINISH:		SURFACE FINISH: 63/ OR BETTER		DOWNLOADED FROM MPFPI.COM	
UNLESS OTHERWISE SPECIFIED:		UNLESS OTHERWISE SPECIFIED:		DWG. NO. A0516	
ALL DIAMETERS CONCENTRIC WITHIN .005. REMOVE ALL BURRS AND SHARP EDGES		ALL DIAMETERS CONCENTRIC WITHIN .005. REMOVE ALL BURRS AND SHARP EDGES		REV	
				Thursday, December 6, 2018 10:46:33 AM	