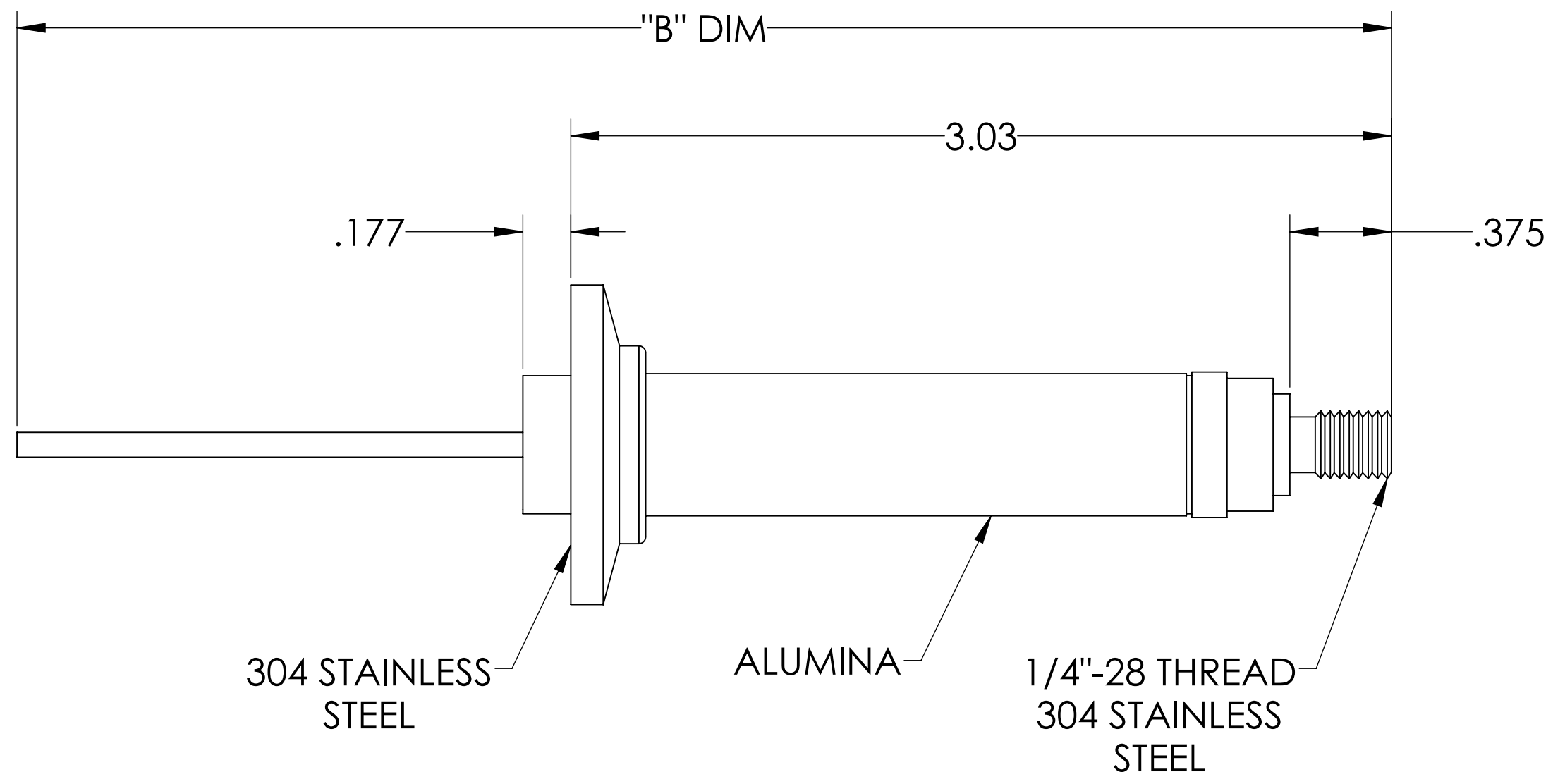
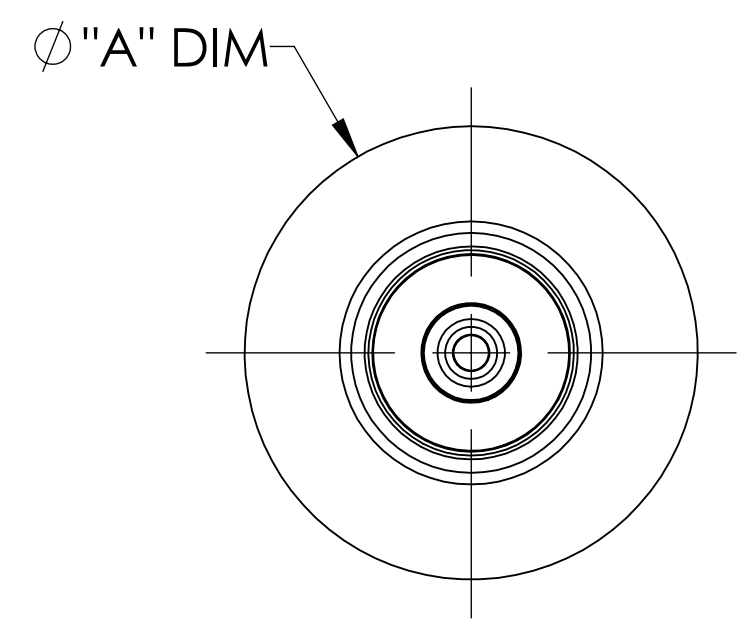
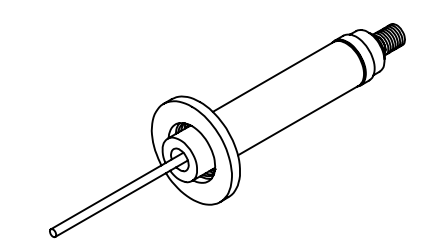


MPF PRODUCTS INC.



PART #	Ø "A" DIM	"B" DIM
A0532-1-QF	1.18	8.74
A0532-2-QF	1.57	8.74
A0532-3-QF	2.16	8.74
A0532-4-QF	2.95	8.74

- NOTE:
1. VOLTAGE: 20,000 VOLTS DC
 2. CURRENT: 15 AMPS
 3. TEMPERATURE RATING: -100 TO 450°C

Power Feedthrough, 20 KV, 1 Pin, 0.092" Nickel Conductor, QF/KF, UHV Rated, Bakeable to 450°C

UNLESS OTHERWISE SPECIFIED:		QUOTATION #		N/A	
DIMENSIONS ARE IN INCHES TOLERANCES:		NAME	DATE	MPF PRODUCTS INC.	
ANGULAR: MACH ± 1/2°		DRAWN	9/11/2015		
TWO PLACE DECIMAL ± .030		CHECKED	9/11/2015		
THREE PLACE DECIMAL ± .015		ENG APPR.	9/11/2015		
MATERIAL		THIRD ANGLE:		POWER FEEDTHROUGH, 20 KV, 1 PIN, QF/KF	
FINISH		APPLICATION			
PLATING		NEXT ASSY USED ON			
SURFACE FINISH:		63 OR BETTER		DOWNLOADED FROM MPFPI.COM	
UNLESS OTHERWISE SPECIFIED:		ALL DIAMETERS CONCENTRIC WITHIN .005.		DWG. NO. A0532	
REMOVE ALL BURRS AND SHARP EDGES		Tuesdays, January 22, 2019 10:35:57 AM		REV	