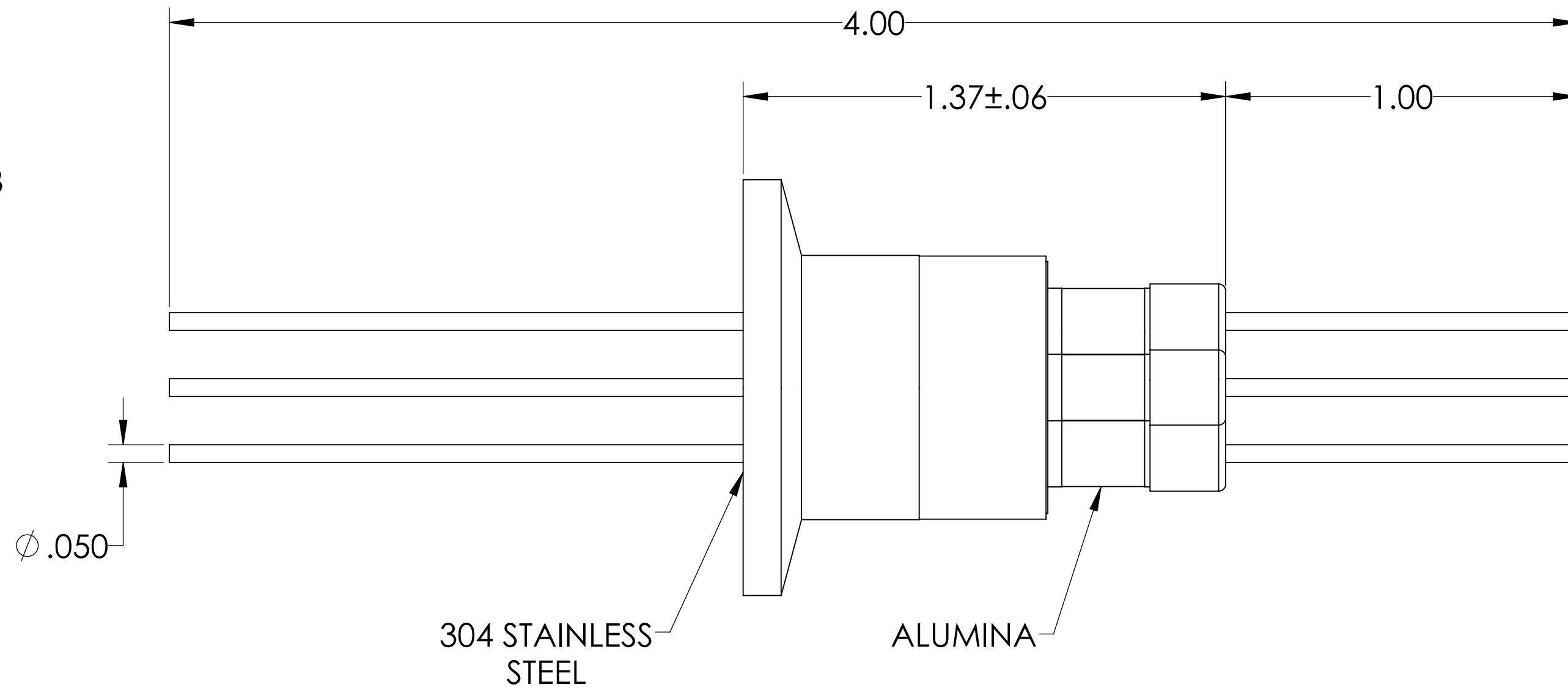
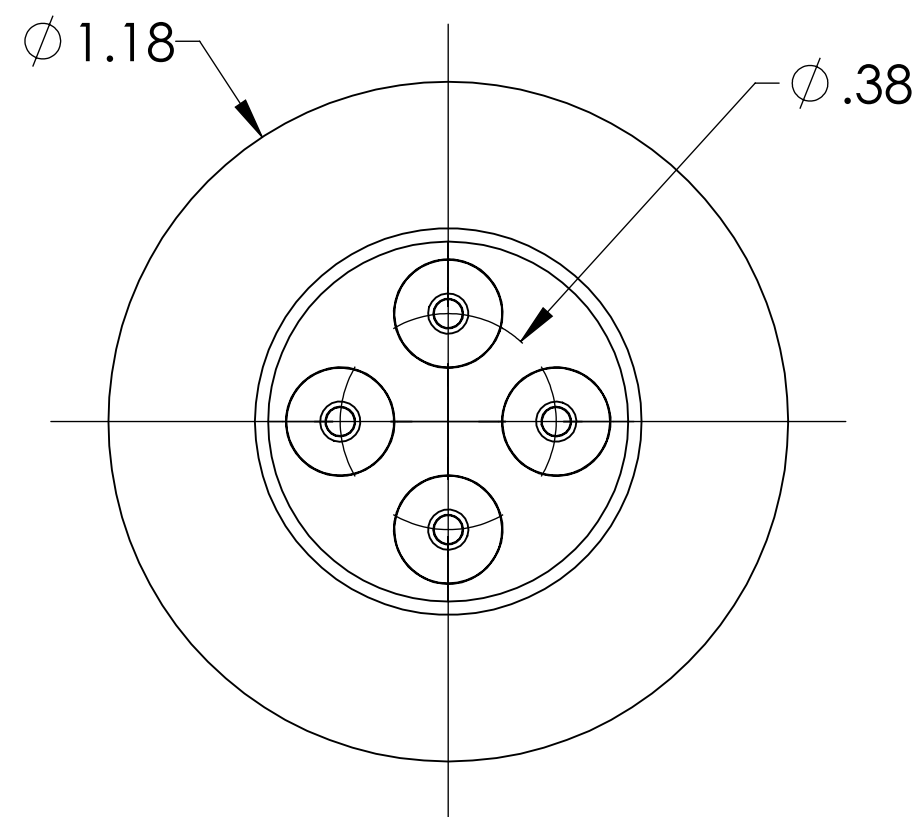
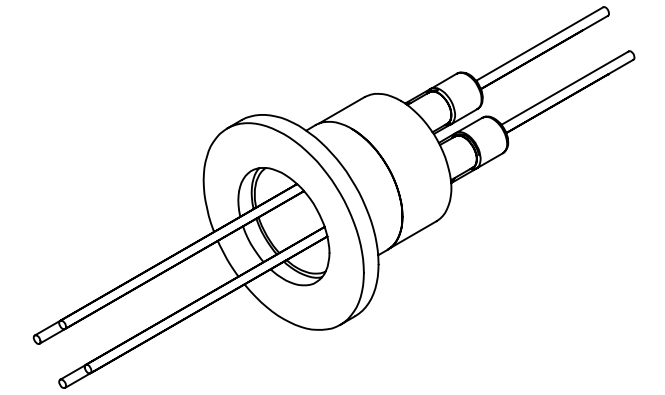


# MPF PRODUCTS INC.



PART #	CONDUCTOR MATERIAL	CURRENT RATING
A0535-1-QF	NICKEL 200	8 AMPS
A0535-2-QF	304 STAINLESS STEEL	1 AMP
A0535-3-QF	OFHC COPPER	25 AMPS
A0535-4-QF	MOLYBDENUM	13 AMPS

**NOTE:**

1. VOLTAGE: 5000 VOLTS DC
2. CURRENT: SEE TABLE
3. TEMPERATURE RATING: -100 TO 450°C

Power Feedthrough, 5000 Volts, 4 Pins, 0.050" Conductor, 1.18" QF/KF, UHV Rated, Bakeable to 450°C

UNLESS OTHERWISE SPECIFIED:	QUOTATION #	N/A	
DIMENSIONS ARE IN INCHES TOLERANCES:	DRAWN	NAME	DATE
ANGULAR: MACH ± 1/2°	WJ	WJ	9/11/2015
TWO PLACE DECIMAL ± .030	CHECKED		9/11/2015
THREE PLACE DECIMAL ± .015	ENG APPR.	WJ	9/11/2015
MATERIAL	THIRD ANGLE:		
FINISH	APPLICATION		
PLATING	NEXT ASSY	USED ON	
	SURFACE FINISH:	63/	OR BETTER
	UNLESS OTHERWISE SPECIFIED:	ALL DIAMETERS CONCENTRIC WITHIN .005. REMOVE ALL BURRS AND SHARP EDGES	
	TITLE:	POWER FEEDTHROUGH, 5000 VOLTS, 4 PINS, 1.18" QF/KF	
	DOWNLOADED FROM MPFPI.COM	DWG. NO.	REV
		A0535	
	Thursday, December 6, 2018 4:16:44 PM		