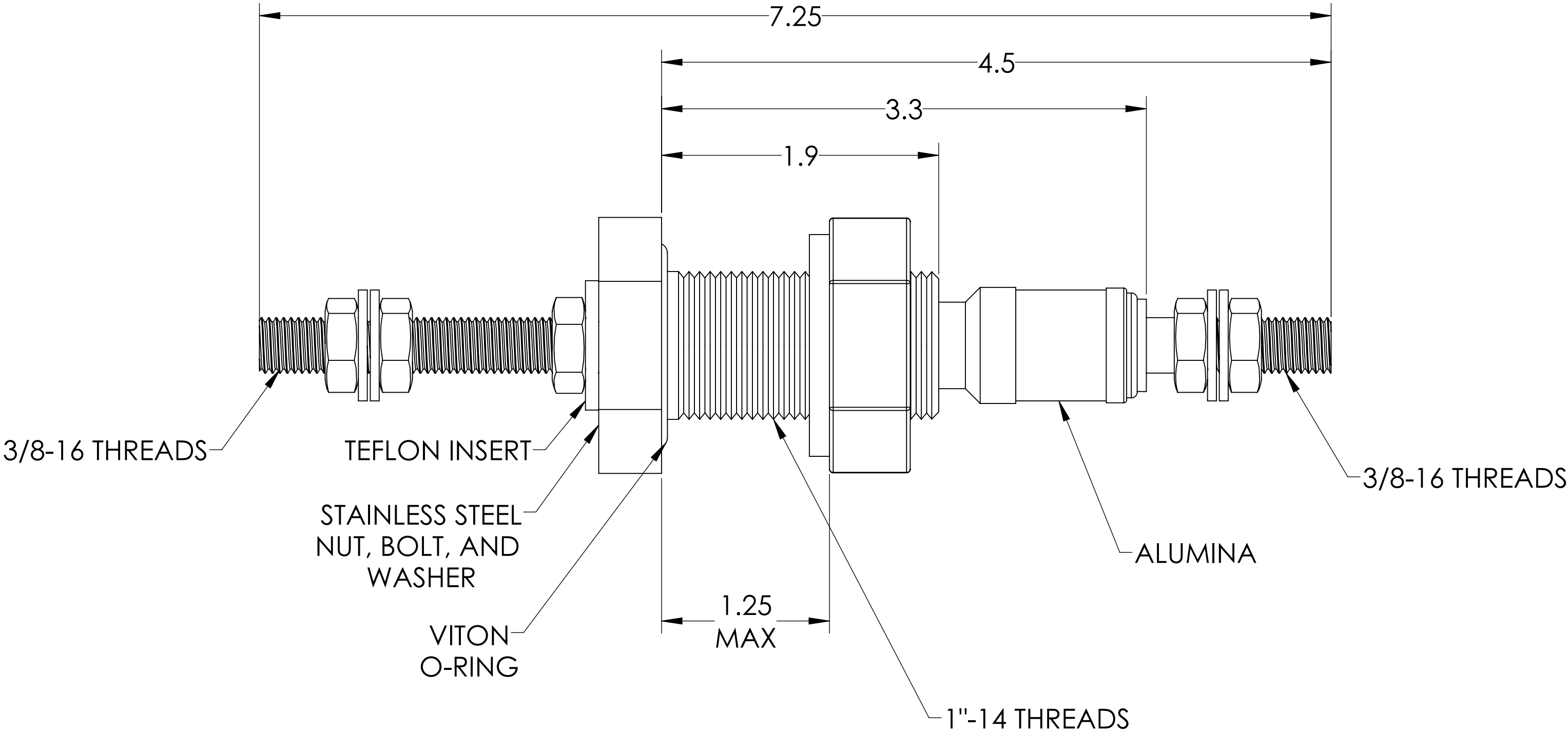
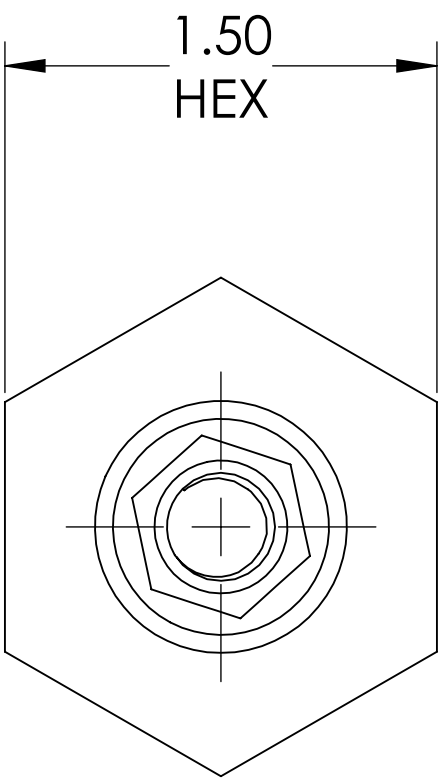
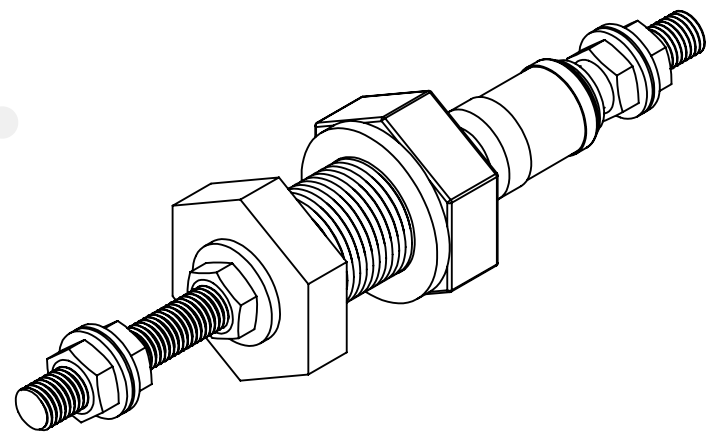


MPF PRODUCTS INC.



- NOTE:
- 1. VOLTAGE: 3,000 VOLTS DC
  - 2. CURRENT: 250 AMPS
  - 3. TEMPERATURE RATING: -100 TO 450°C

Power Feedthrough, 3000 Volts, 250 amps, 1 Pins, Copper Conductor, 1" Baseplate Bolt, UHV Rated, Bakeable to 450°C

UNLESS OTHERWISE SPECIFIED:		QUOTATION #	
DIMENSIONS ARE IN INCHES		N/A	
TOLERANCES:		NAME	DATE
ANGULAR: MACH ± 1/2°		DRAWN	9/11/2015
TWO PLACE DECIMAL ± .030		CHECKED	9/11/2015
THREE PLACE DECIMAL ± .015		ENG APPR.	9/11/2015
THIRD ANGLE:		TITLE:	
MATERIAL		POWER FEEDTHROUGH, 3000 VOLTS, 1 PIN, 1" BASEPLATE	
FINISH		APPLICATION	
PLATING		NEXT ASSY	
		USED ON	
		SURFACE FINISH: 63/ OR BETTER	
		UNLESS OTHERWISE SPECIFIED:	
		ALL DIAMETERS CONCENTRIC WITHIN .005. REMOVE ALL BURRS AND SHARP EDGES	
		DWG. NO. A0542-1-BP	
		REV	
		Tuesdays, January 22, 2019 10:39:24 AM	