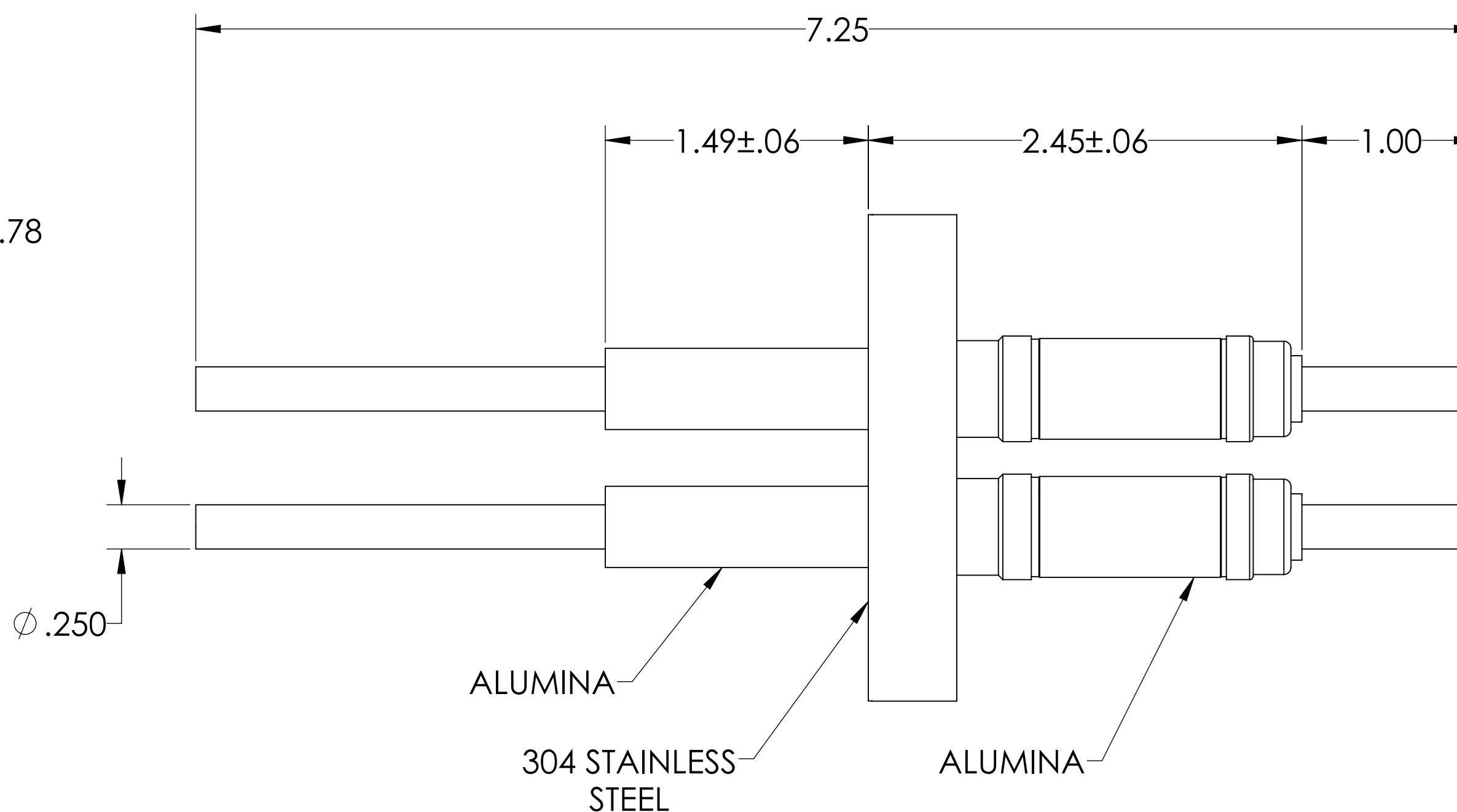
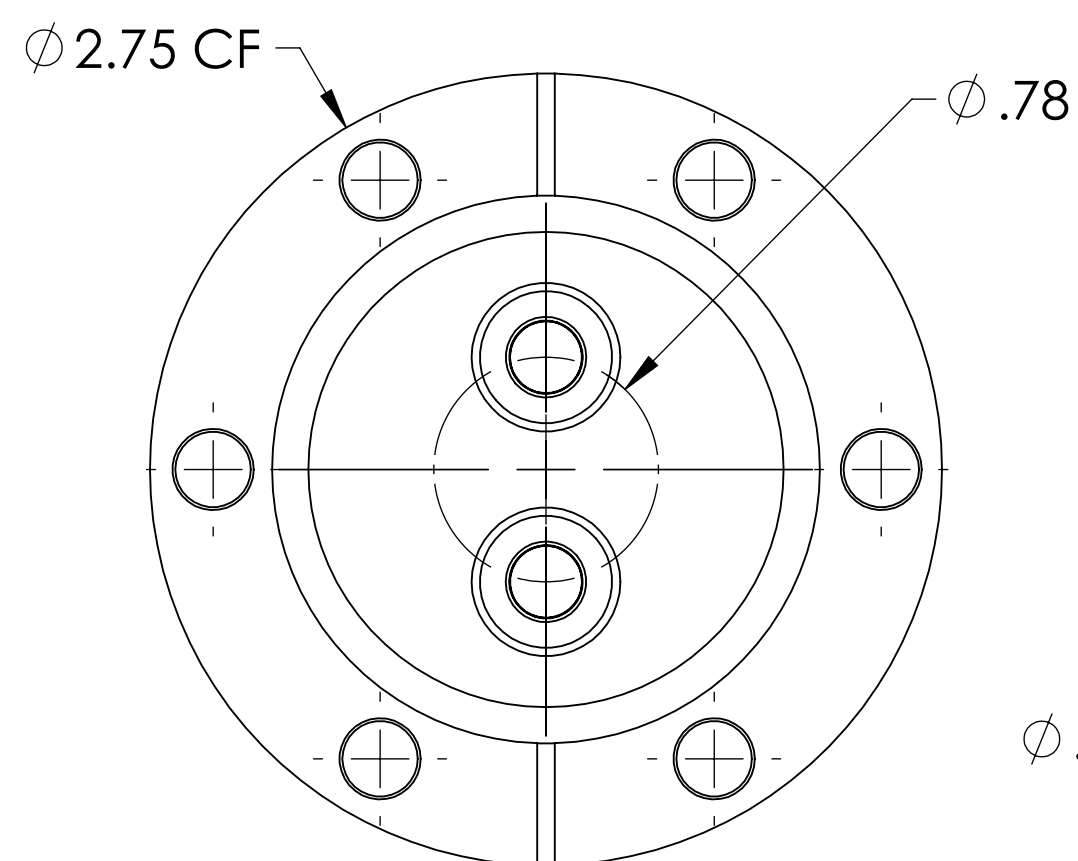
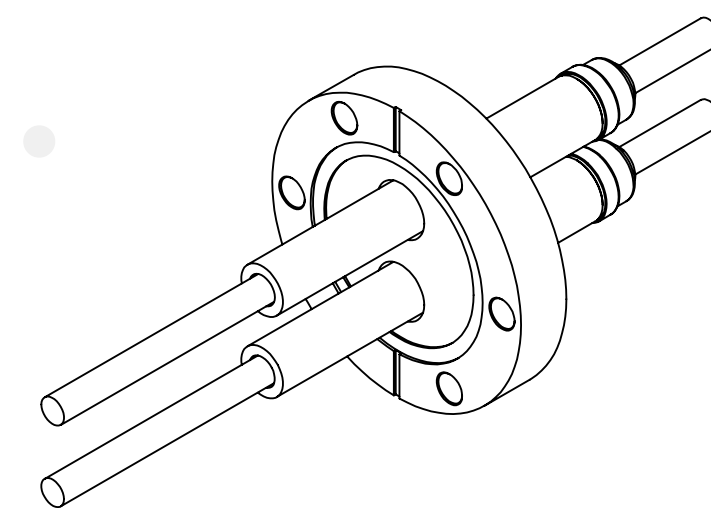


MPF PRODUCTS INC.



PART #	CONDUCTOR MATERIAL	CURRENT RATING
A0550-1-CF	OFHC COPPER	180 AMPS
A0550-2-CF	304 STN STL	7 AMPS
A0550-3-CF	NICKEL 200	55 AMPS

NOTE:

1. VOLTAGE: 12,000 VOLTS DC
2. CURRENT: SEE TABLE
3. TEMPERATURE RATING: -100 TO 450°C

Power Feedthrough, 12 KV, 2 Pins, 0.250" Conductor, 2.75" Conflat Flange, UHV Rated, Bakeable to 450°C

UNLESS OTHERWISE SPECIFIED:		QUOTATION #		N/A		
DIMENSIONS ARE IN INCHES		NAME	DATE	MPF PRODUCTS INC. TITLE: POWER FEEDTHROUGH, 12 KV, 2 PINS, 2.75" CONFLAT FLANGE DOWNLOADED FROM MPFPI.COM DWG. NO. A0550 REV		
TOLERANCES:		DRAWN	WJ			9/11/2015
ANGULAR: MACH ± 1/2°		CHECKED	WJ			9/11/2015
TWO PLACE DECIMAL ± .030		ENG APPR.	WJ			9/11/2015
THREE PLACE DECIMAL ± .015		THIRD ANGLE:				
MATERIAL		APPLICATION				
		NEXT ASSY	USED ON			
FINISH		SURFACE FINISH:		63/ OR BETTER		
PLATING		UNLESS OTHERWISE SPECIFIED:		ALL DIAMETERS CONCENTRIC WITHIN .005. REMOVE ALL BURRS AND SHARP EDGES		
		Friday, August 16, 2019 8:02:15 AM				