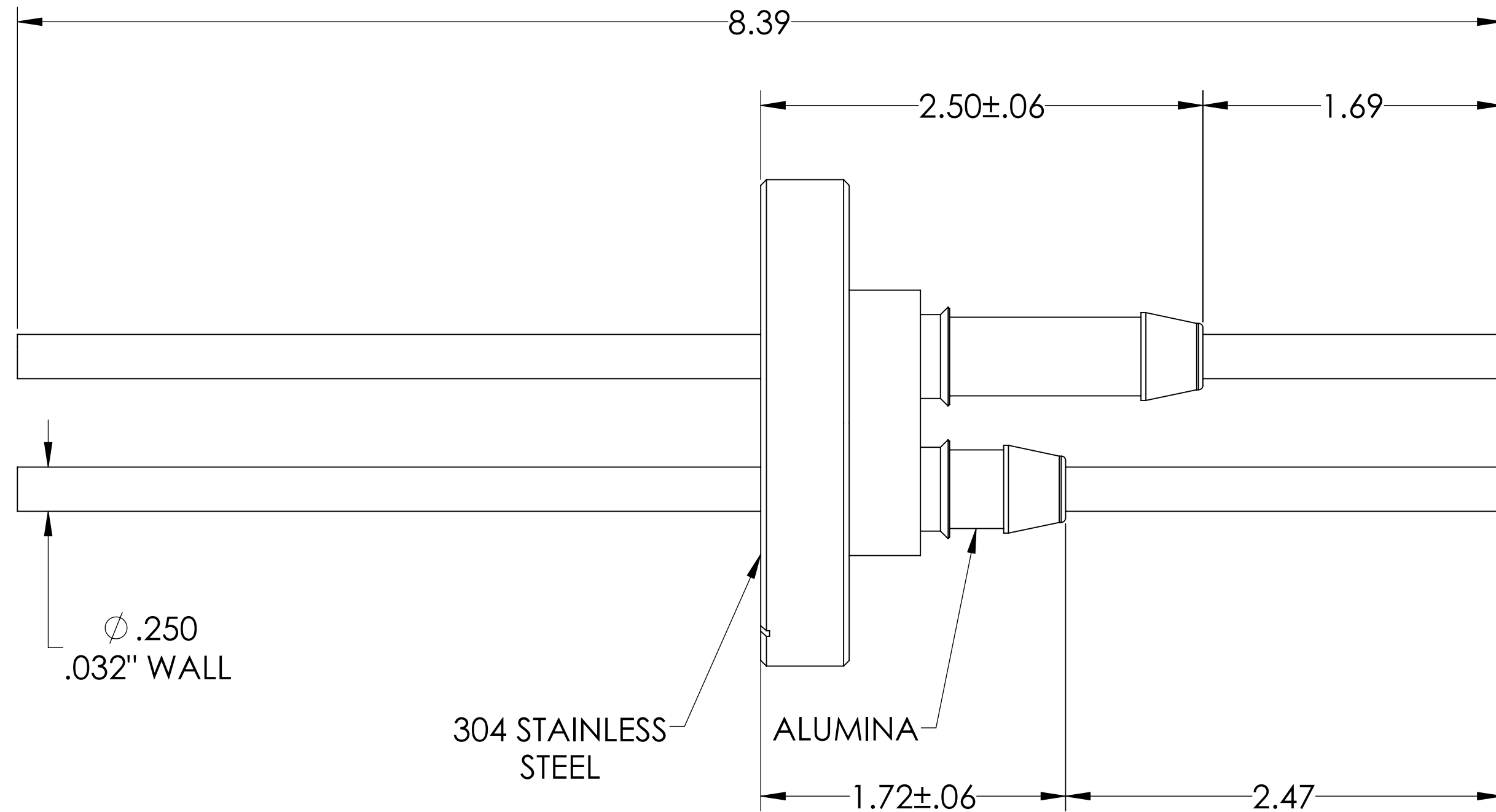
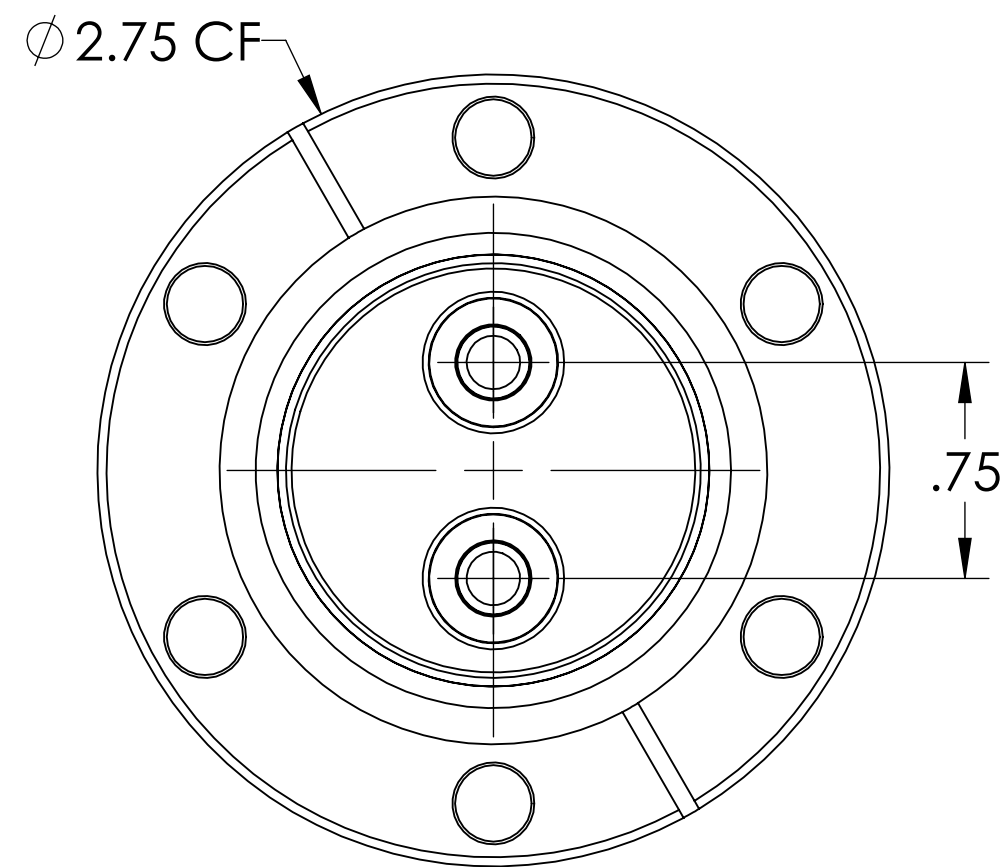
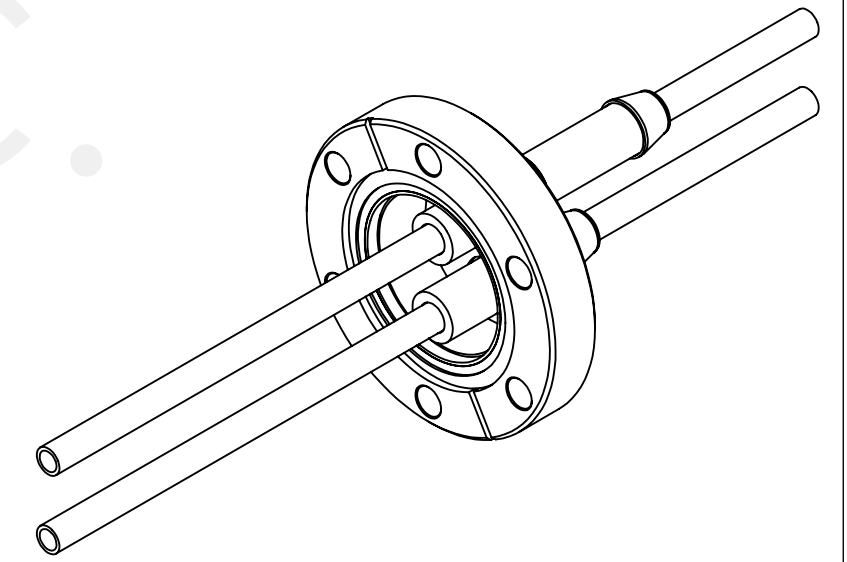


MPF PRODUCTS INC.



NOTE:

1. VOLTAGE: 8,000 VOLTS DC
2. CURRENT: N/A
3. TEMPERATURE RATING: -100 TO 450°C

RF Power Feedthrough, 8000 Volts, 10 KW @ 450 KHz, 2 Tubes, 0.250" Copper Conductor, 2.75" Conflat Flange, UHV Rated, Bakeable to 450°C

UNLESS OTHERWISE SPECIFIED:		QUOTATION #		N/A	
DIMENSIONS ARE IN INCHES TOLERANCES:		NAME	DATE	MPF PRODUCTS INC.	
ANGULAR: MACH ± 1/2°		DRAWN	9/11/2015		
TWO PLACE DECIMAL ± .030		CHECKED	9/11/2015		
THREE PLACE DECIMAL ± .015		ENG APPR.	WJ 9/11/2015		
MATERIAL		THIRD ANGLE:		TITLE: RF POWER FEEDTHROUGH, 8 KV, 10 KW, 2 PINS, 2.75" CONFLAT FLANGE	
FINISH					
PLATING		APPLICATION NEXT ASSY USED ON			
SURFACE FINISH:		63/ OR BETTER		DOWNLOADED FROM MPFPI.COM	
UNLESS OTHERWISE SPECIFIED:		ALL DIAMETERS CONCENTRIC WITHIN .005. REMOVE ALL BURRS AND SHARP EDGES		DWG. NO.	REV
				A0559-1-CF	
				Thursday, December 13, 2018 11:00:20 AM	