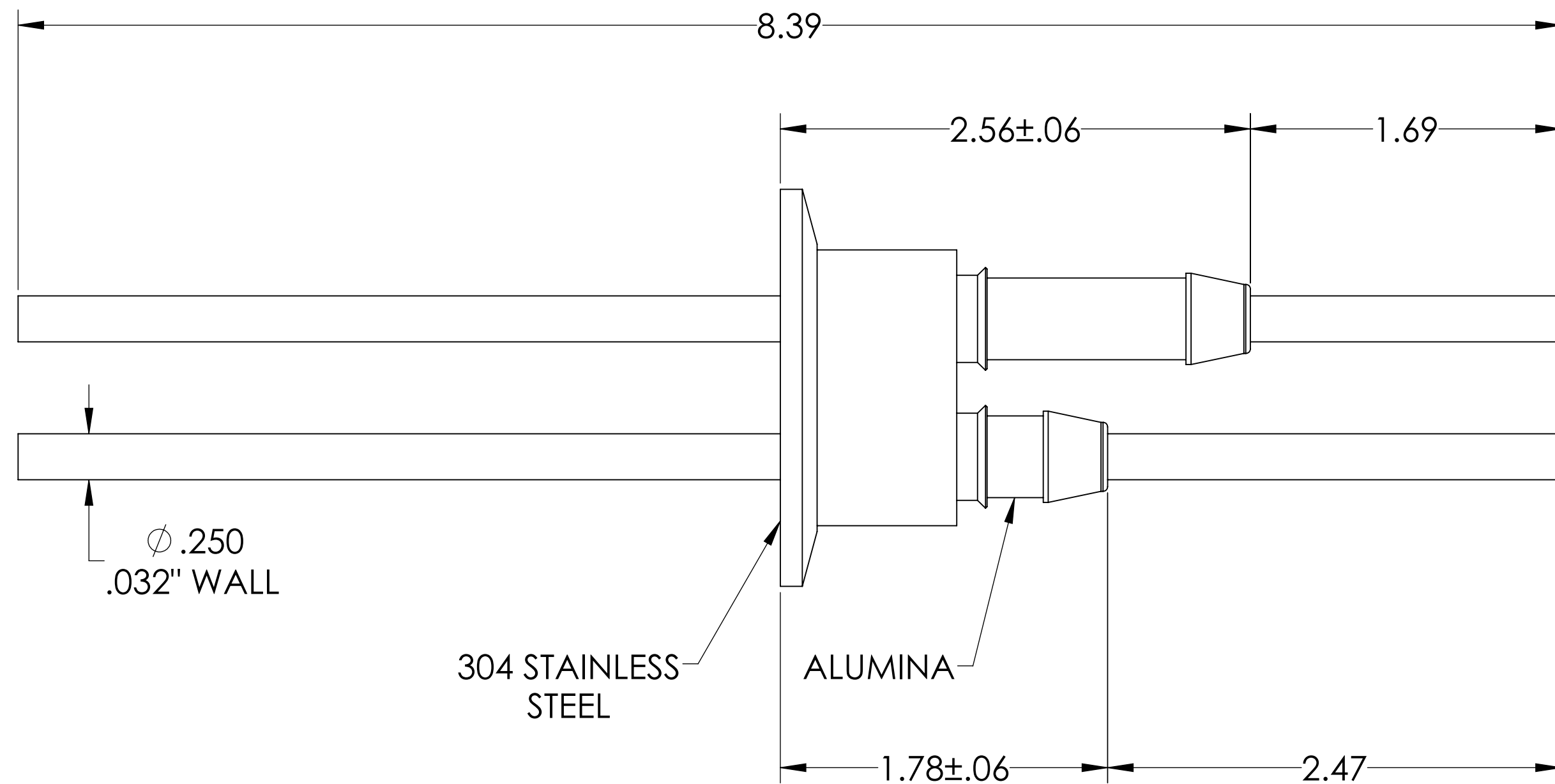
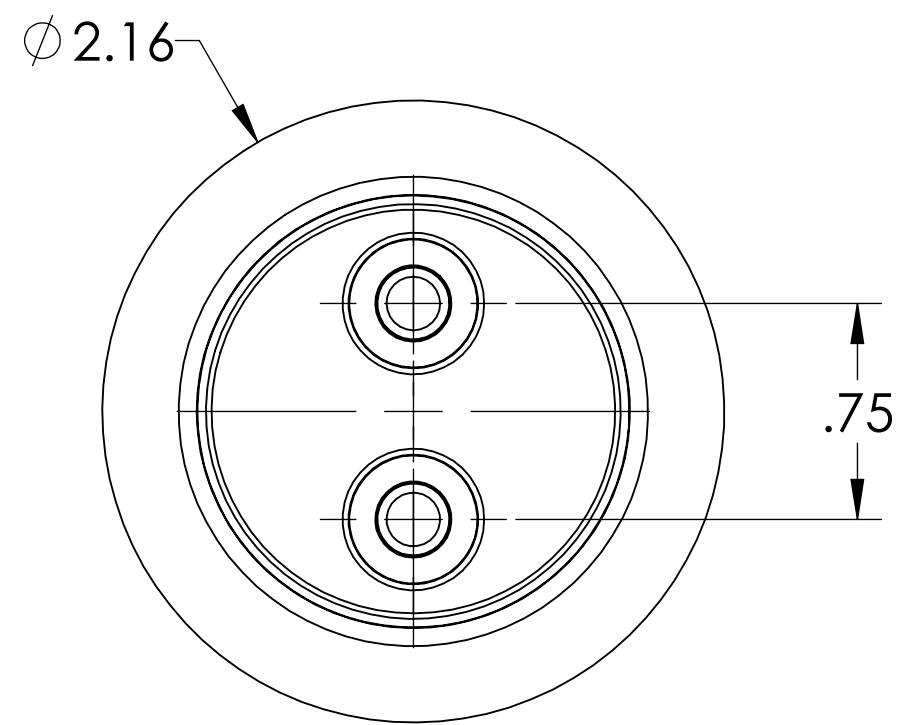
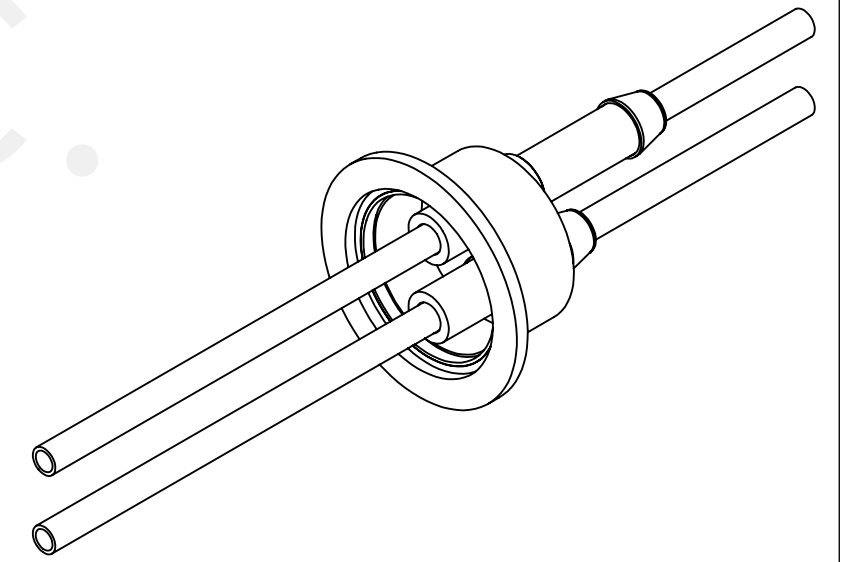


# MPF PRODUCTS INC.



304 STAINLESS STEEL

ALUMINA

**NOTE:**

1. VOLTAGE: 8,000 VOLTS DC
2. CURRENT: N/A
3. TEMPERATURE RATING: -100 TO 450°C

RF Power Feedthrough, 8000 Volts, 10 KW @ 450 KHz, 2 Tubes, 0.250" Copper Conductor, 2.16" QF/KF, UHV Rated, Bakeable to 450°C

UNLESS OTHERWISE SPECIFIED:		QUOTATION #		N/A		
DIMENSIONS ARE IN INCHES		NAME	DATE	MPF PRODUCTS INC.		
TOLERANCES:		DRAWN	WJ			9/11/2015
ANGULAR: MACH ± 1/2°		CHECKED	WJ			9/11/2015
TWO PLACE DECIMAL ± .030		ENG APPR.	WJ			9/11/2015
THREE PLACE DECIMAL ± .015		THIRD ANGLE:		TITLE: RF POWER FEEDTHROUGH, 8 KV, 10 KW, 2 TUBES, 2.16" QF/KF DWG. NO. A0565-1-QF REV.		
MATERIAL						
FINISH		APPLICATION				
PLATING		NEXT ASSY USED ON				
SURFACE FINISH: 63 OR BETTER		UNLESS OTHERWISE SPECIFIED:		DOWNLOADED FROM MPFPI.COM		
ALL DIAMETERS CONCENTRIC WITHIN .005. REMOVE ALL BURRS AND SHARP EDGES		Thursday, December 13, 2018 10:59:11 AM		REV		