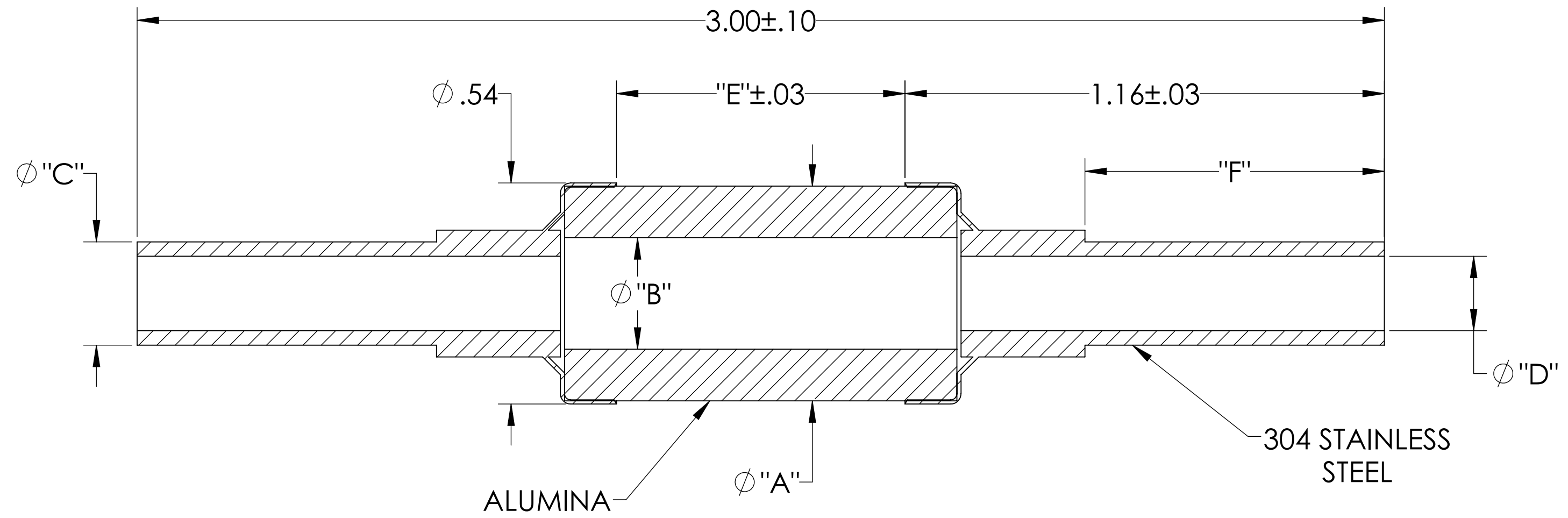
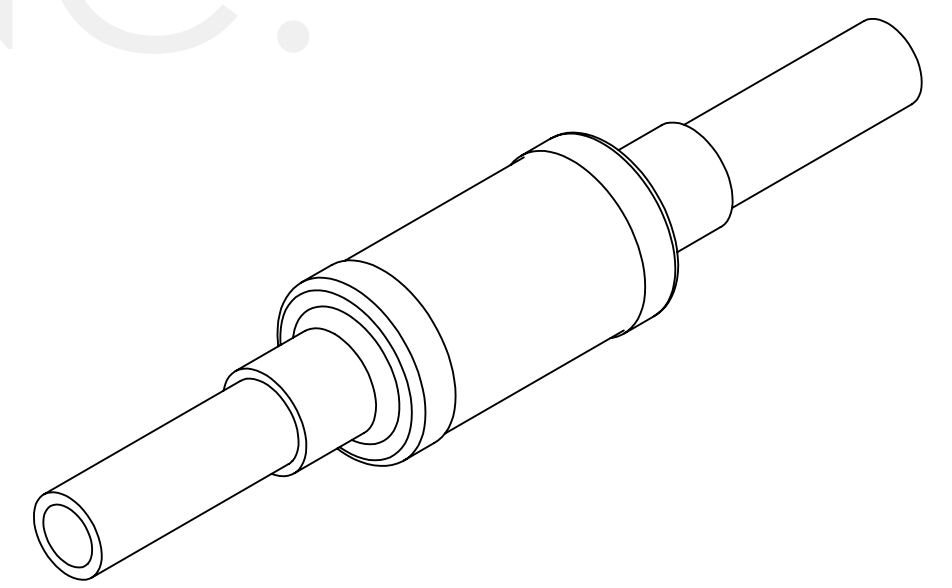


# MPF PRODUCTS INC.



PART #	$\phi "A"$	$\phi "B"$	$\phi "C" \pm .002$	$"D"$	$"E" \pm .030$	$"F"$
A0572-1-W	.51	.27	250	.180	.67	.73
A0572-2-W	.75	.44	.375	.305	.67	.35
A0572-3-W	.75	.44	.375	.305	.67	.79

**SPECIFICATIONS:**

1. VOLTAGE: 10KV
2. TEMPERATURE: -200°C TO 450°C
3. LEAK RATE <math>< 1 \times 10^{-9}</math> ATM CC/SEC HE

Break, 10KV Isolation, 0.25" Dia Stainless Steel Tube Adapters, High Voltage Isolation, Thermal Isolation, Weldable Tube Ends, UHV Compatible

UNLESS OTHERWISE SPECIFIED:		QUOTATION #		N/A		
DIMENSIONS ARE IN INCHES		NAME	DATE	MPF PRODUCTS INC.		
TOLERANCES:		DRAWN	WJ			9/11/2015
ANGULAR: MACH $\pm 1/2^\circ$		CHECKED	WJ			9/11/2015
TWO PLACE DECIMAL $\pm .030$		ENG APPR.	WJ			9/11/2015
THREE PLACE DECIMAL $\pm .015$		THIRD ANGLE:		TITLE: BREAK, 10KV ISOLATION, STAINLESS STEEL TUBE ADAPTERS DWG. NO. A0572 REV		
MATERIAL						
FINISH		SURFACE FINISH: $\sqrt{63}$ OR BETTER UNLESS OTHERWISE SPECIFIED: ALL DIAMETERS CONCENTRIC WITHIN .005. REMOVE ALL BURRS AND SHARP EDGES				
PLATING		APPLICATION		DOWNLOADED FROM MPFPI.COM Friday, January 25, 2019 8:53:55 AM		
		NEXT ASSY	USED ON			