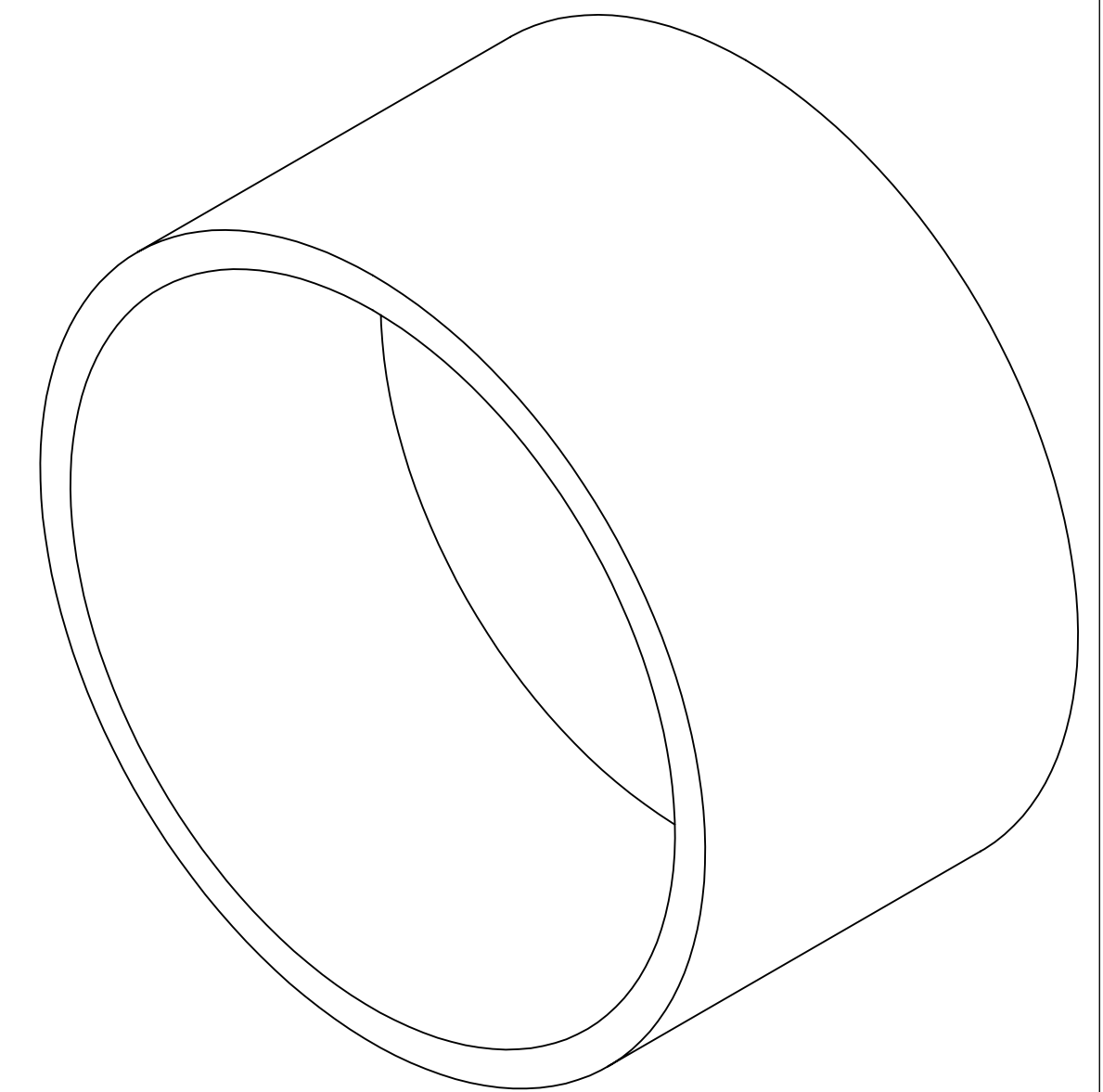
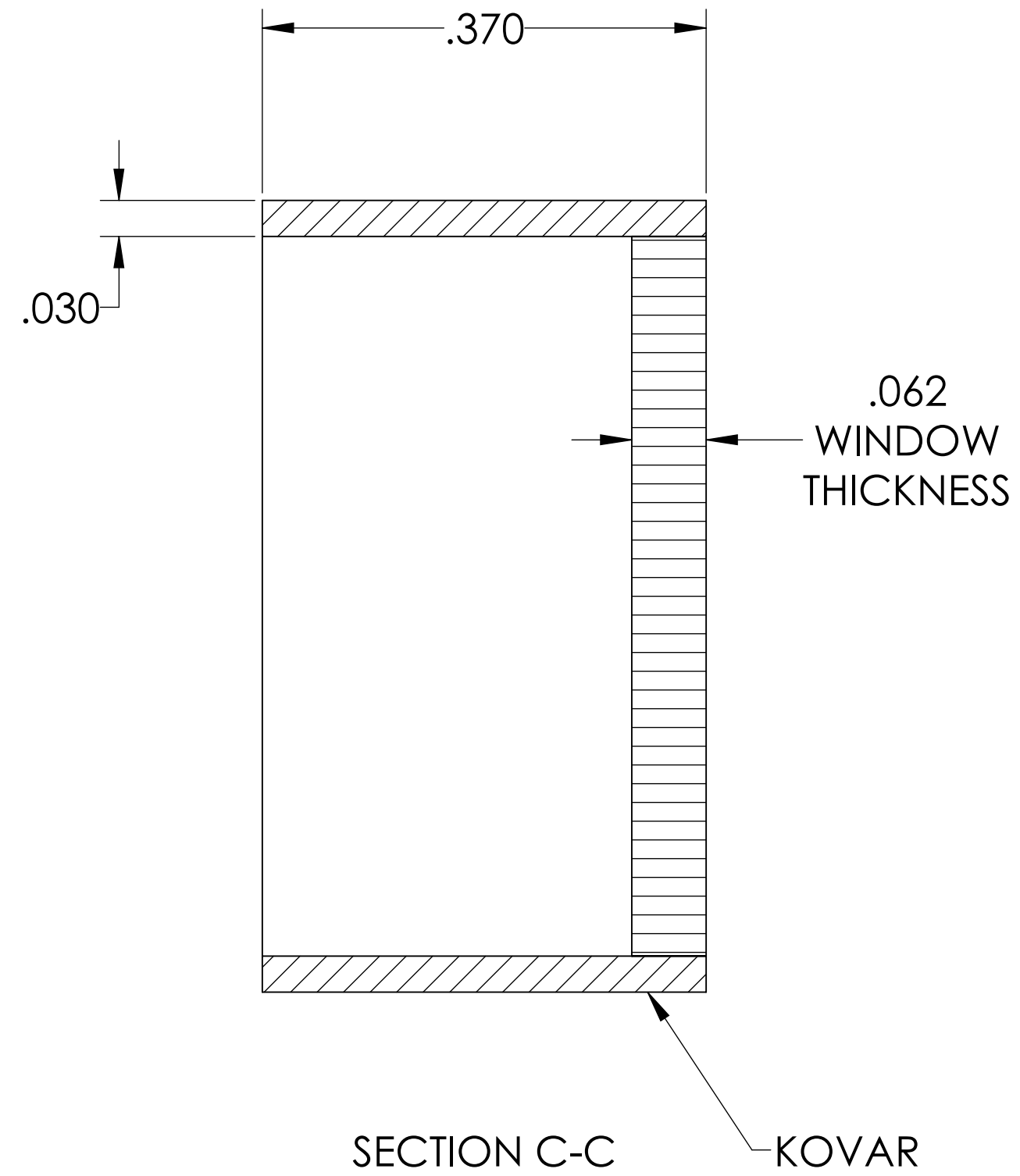
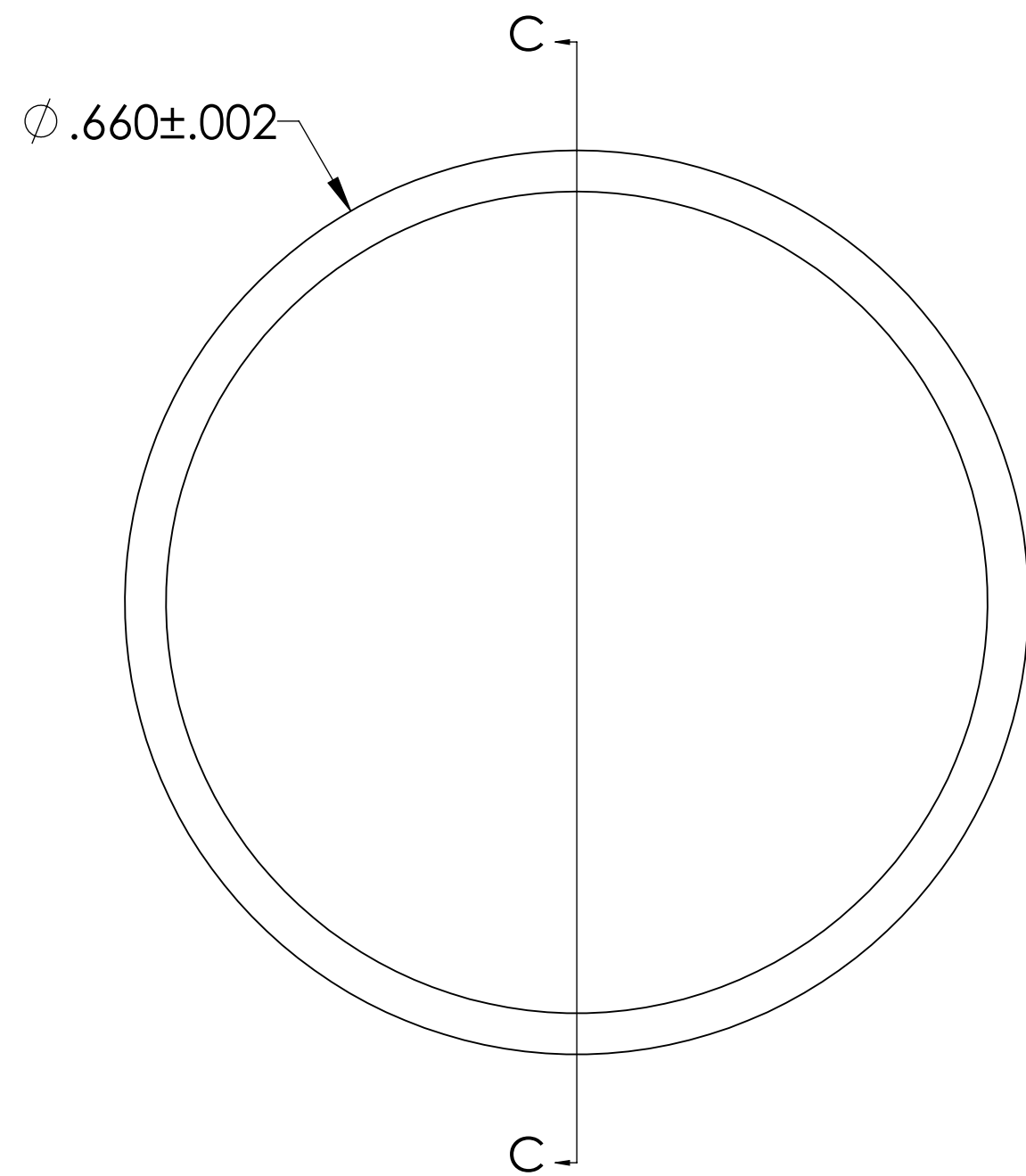


# MPF PRODUCTS INC.



**SPECIFICATIONS:**

1. MATERIAL: SAPPHIRE
2. TWD <  $8\lambda$  @ 632nm (PEAK TO VALLEY)
3. PARALLELISM < 3 ARC-MINUTES
4. SURFACE FINISH: 50-20 SCRATCH-DIG
5. THERMAL RANGE:  $-100^{\circ}\text{C}$  TO  $450^{\circ}\text{C}$
6. ORIENTATION: RANDOM
7. LEAK RATE <  $1 \times 10^{-9}$  ATM CC/SEC HE

UV Grade Sapphire Viewport, 0.59" View Dia, 0.66" Dia Kovar Weld Adapter

UNLESS OTHERWISE SPECIFIED:		QUOTATION #		N/A		
DIMENSIONS ARE IN INCHES		NAME	DATE	MPF PRODUCTS INC.		
TOLERANCES:		DRAWN	WJ			9/11/2015
ANGULAR: MACH $\pm 1/2^{\circ}$		CHECKED	WJ			9/11/2015
TWO PLACE DECIMAL $\pm .030$		ENG APPR.	WJ			9/11/2015
THREE PLACE DECIMAL $\pm .015$		THIRD ANGLE:		VIEWPORT, SAPPHIRE, UV, 0.6 VIEW, WELD ADAPTER		
MATERIAL						
FINISH		APPLICATION				
PLATING		NEXT ASSY	USED ON	DOWNLOADED FROM MPFPI.COM		
SURFACE FINISH: $\sqrt{63}$ OR BETTER		UNLESS OTHERWISE SPECIFIED:		DWG. NO.	REV.	
ALL DIAMETERS CONCENTRIC WITHIN .005. REMOVE ALL BURRS AND SHARP EDGES		TITLE:		A0629-1-W		
		Thursday, January 24, 2019 10:29:59 AM				