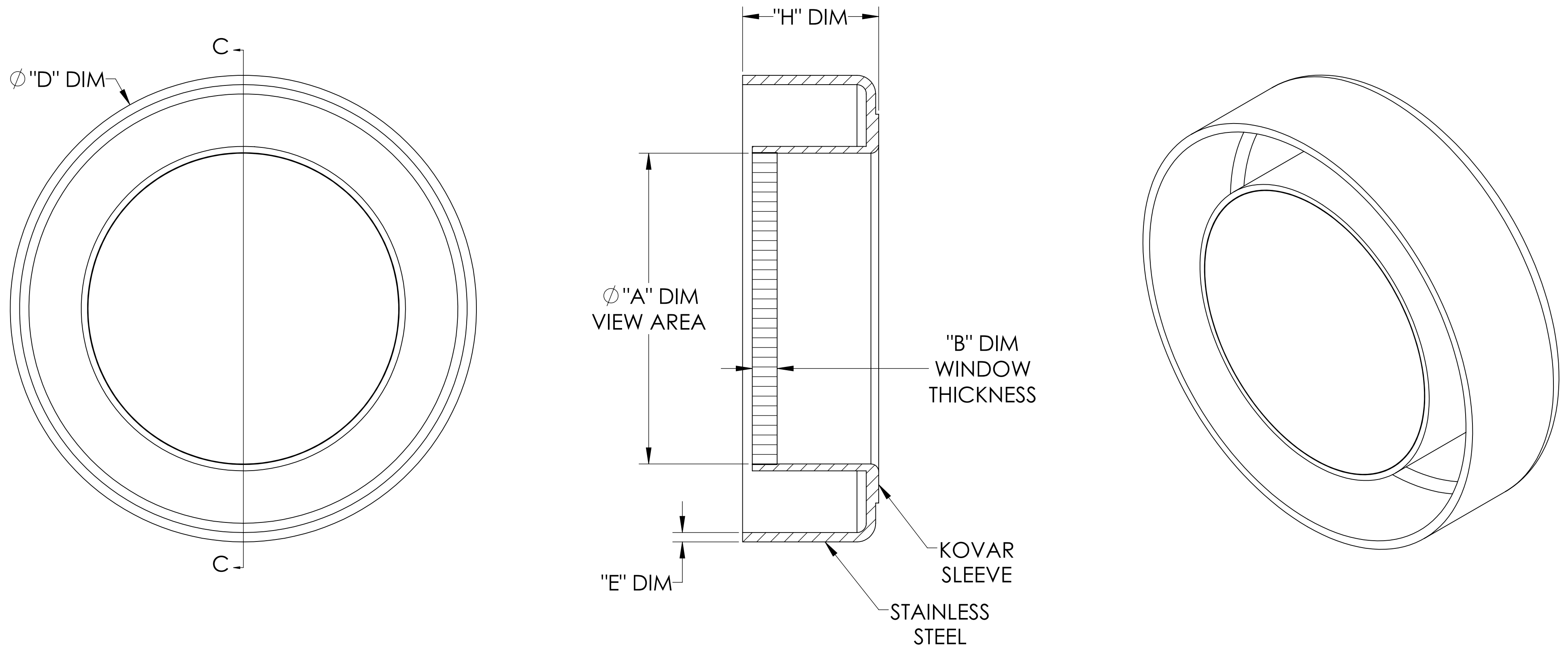


MPF PRODUCTS INC.



PART #	Ø "A" VIEW AREA	"B" DIM	Ø "D" ±.002	"E" DIM	"H" DIM
A0633-1-W	.69	.080	1.500	.030	.44
A0633-2-W	.94	.080	1.500	.030	.44
A0633-3-W	1.44	.080	2.500	.030	.49
A0633-4-W	1.94	.094	2.500	.030	.54

SPECIFICATIONS:

1. MATERIAL: SAPPHIRE
2. TWD < 8λ @ 632nm (PEAK TO VALLEY)
3. PARALLELISM < 3 ARC-MINUTES
4. SURFACE FINISH: 50-20 SCRATCH-DIG
5. THERMAL RANGE: -100 °C TO 450 °C
6. ORIENTATION: RANDOM
7. LEAK RATE < 1X10-9 ATM CC/SEC HE

UV Grade Sapphire Viewport, .69", .94", 1.44", 1.94" View Dia, 1.50", 2.50" Dia Stainless Steel Weld Adapter

UNLESS OTHERWISE SPECIFIED:		QUOTATION #		N/A		
DIMENSIONS ARE IN INCHES		NAME	DATE	MPF PRODUCTS INC. TITLE: VIEWPORT, SAPPHIRE, UV, WELD ADAPTER DOWNLOADED FROM MPFPI.COM DWG. NO. A0633 REV		
TOLERANCES:		DRAWN	WJ			9/11/2015
ANGULAR: MACH ± 1/2°		CHECKED	WJ			9/11/2015
TWO PLACE DECIMAL ± .030		ENG APPR.	WJ			9/11/2015
THREE PLACE DECIMAL ± .015		THIRD ANGLE:				
MATERIAL						
FINISH		APPLICATION				
PLATING		NEXT ASSY	USED ON			
		SURFACE FINISH: 63/ OR BETTER				
		UNLESS OTHERWISE SPECIFIED:				
		ALL DIAMETERS CONCENTRIC WITHIN .005.				
		REMOVE ALL BURRS AND SHARP EDGES		Thursday, January 24, 2019 10:31:39 AM		