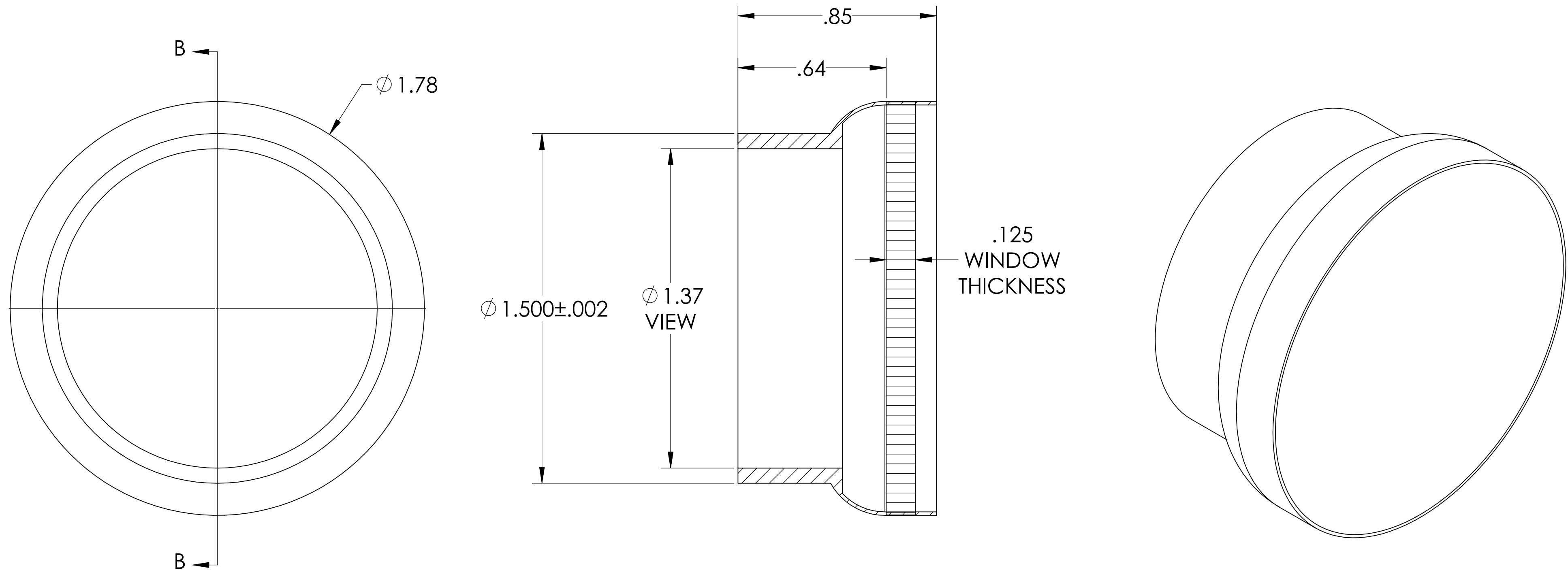


MPF PRODUCTS INC.



SPECIFICATIONS:

1. MATERIAL: CORNING HPFS 7980 FUSED SILICA OR EQUIVALENT
2. TWD <math>< 10\lambda</math> @ 632NM (PEAK TO VALLEY)
3. SURFACE FINISH: 40/20 SCRATCH-DIG
4. PARALLELISM <math>< 30</math> ARC MINUTES
5. THERMAL RANGE: -100°C TO 200°C
6. HOMOGENEITY GRADE: F
7. INCLUSION CLASS: 2
8. LEAK RATE <math>< 1 \times 10^{-9}</math> ATM-CC/SEC HE

UV Grade Fused Silica Viewport, 1.37" View Dia, 1.50" Dia Stainless Steel Weld Adapter

| | | | |
|---|-----------------------------|---|---|
| UNLESS OTHERWISE SPECIFIED: | QUOTATION # | N/A | APPROVED |
| DIMENSIONS ARE IN INCHES TOLERANCES: | DRAWN | WJ | 9/11/2015 |
| ANGULAR: MACH $\pm 1/2^\circ$ | CHECKED | WJ | 9/11/2015 |
| TWO PLACE DECIMAL $\pm .030$ | ENG APPR. | WJ | 9/11/2015 |
| THREE PLACE DECIMAL $\pm .015$ | THIRD ANGLE: | | |
| MATERIAL | APPLICATION | | |
| SEE NOTES | NEXT ASSY | USED ON | TITLE: VIEWPORT, FUSED SILICA, UV, 1.4" VIEW, WELD ADAPTER |
| FINISH | SURFACE FINISH: | 63/ OR BETTER | DOWNLOADED FROM MPFPI.COM |
| PLATING | UNLESS OTHERWISE SPECIFIED: | ALL DIAMETERS CONCENTRIC WITHIN .005. REMOVE ALL BURRS AND SHARP EDGES | DWG. NO. A0657-11-W |
| | | | REV |
| | | Thursday, January 24, 2019 11:01:16 AM | |