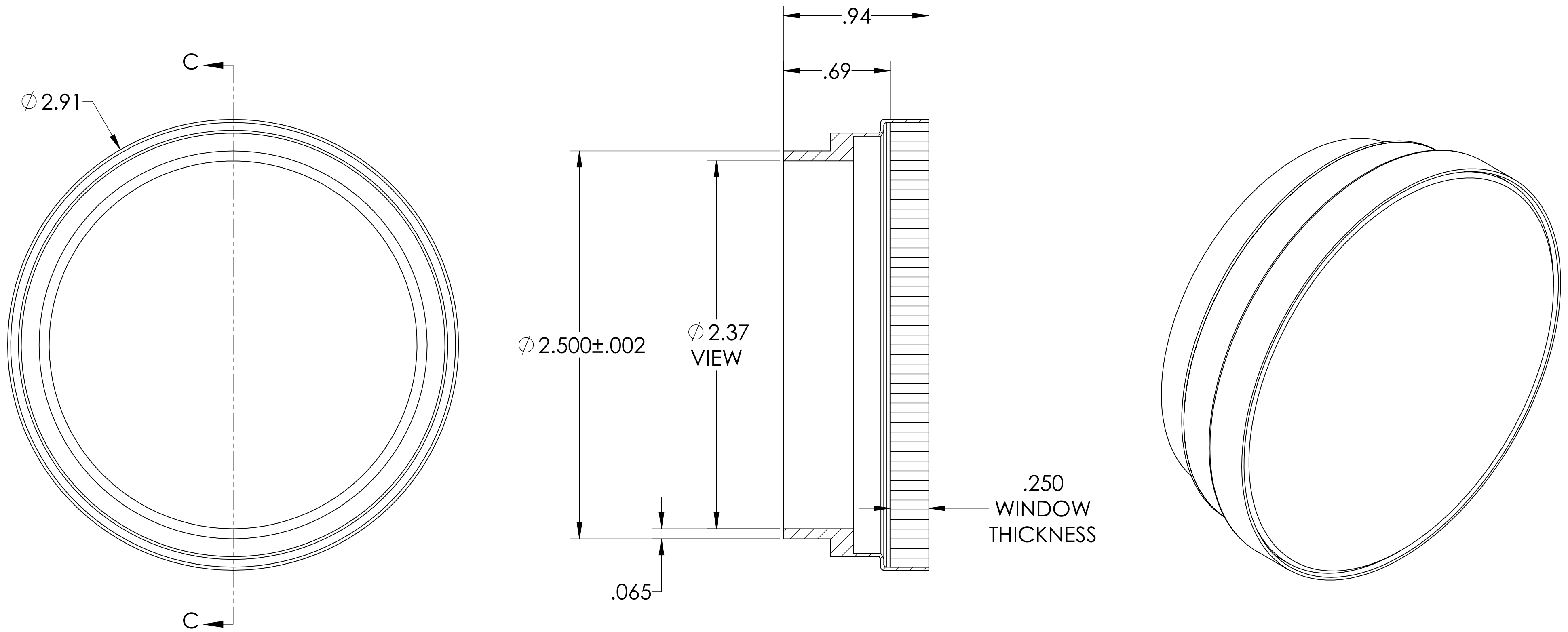


MPF PRODUCTS INC.



SECTION C-C
SCALE 2 : 1

SPECIFICATIONS:

1. MATERIAL: CORNING HPFS 7980 FUSED SILICA OR EQUIVALENT
2. TWD < 10λ @ 632NM (PEAK TO VALLEY)
3. SURFACE FINISH: 40/20 SCRATCH-DIG
4. PARALLELISM < 30 ARC MINUTES
5. THERMAL RANGE: -100 °C TO 200 °C
6. HOMOGENEITY GRADE: F
7. INCLUSION CLASS: 2
8. LEAK RATE < 1X10-9 ATM CC/SEC HE

UV Grade Fused Silica Viewport, 2.37" View Dia, 2.50" Dia Stainless Steel Weld Adapter

UNLESS OTHERWISE SPECIFIED:	QUOTATION #	N/A	APPROVED
DIMENSIONS ARE IN INCHES TOLERANCES:	NAME	DATE	MPF PRODUCTS INC.
ANGULAR: MACH ± 1/2°	DRAWN	9/11/2015	
TWO PLACE DECIMAL ± .030	CHECKED	9/11/2015	
THREE PLACE DECIMAL ± .015	ENG APPR.	WJ 9/11/2015	
MATERIAL	THIRD ANGLE:	TITLE:	
Material <not specified>	APPLICATION	VIEWPORT, FUSED SILICA, UV, 2.4 VIEW, WELD ADAPTER	
FINISH	NEXT ASSY	USED ON	DOWNLOADED FROM MPFPI.COM
WELDABLE	SURFACE FINISH:	63/ OR BETTER	DWG. NO.
PLATING	UNLESS OTHERWISE SPECIFIED:	ALL DIAMETERS CONCENTRIC WITHIN .005. REMOVE ALL BURRS AND SHARP EDGES	A0657-12-W
			REV
		Thursday, January 24, 2019 11:00:19 AM	